

The graphic features a central white circle containing the text. This circle is set against a dark blue background that has a large, light blue circular cutout. The overall design is modern and clean, with a color palette of blue, white, and light pink.

TRAFFIC SAFETY PROGRAM

AGENDA

Introduction

Courses Offered

Instructor Qualifications

General Rules

Alternative Education

College Variation



COURSE INFORMATION

GROUP DYNAMICS PROGRAM

The Group Dynamics Program is a highway safety initiative in Wisconsin, which aims to assist persons involved in alcohol and other drug-related traffic offenses to examine their impaired driving behavior and to formulate an alternative lifestyle to avoid further OWI related behavior. A change model is presented that describes stages of change that promote the implementation of a positive alternative lifestyle.

COURSE OBJECTIVES

- Students examine a change model and describe how the model can help them to successfully implement lifestyle changes.
- Students examine their values and how they relate to the behavior that led to their OWI.
- Students receive information about Alcohol Concentration (AC) and impairment.
- Students examine the effects of alcohol and other drugs on the mind, body, behavior and driving performance.
- Students receive information about Wisconsin's OWI Laws and Penalties.
- Students explore the legal, financial and personal consequences of another OWI Conviction.
- Students explore how emotions affect their driving performance.
- Students evaluate their own alcohol use history and the factors that affect their current drinking patterns.
- Students develop a personal change plan to avoid further OWI related behavior.

MULTIPLE OFFENDER PROGRAM

The Multiple Offender Program is a specialized education course for individuals who have received more than one OWI (operating while intoxicated) violation. The course provides alcohol and other drugs education and focuses on modifying behaviors and attitudes that foster repeat impaired driving. Strategies and techniques are emphasized that assist individuals in examining reasons they did not successfully change their impaired driving behavior and practicing new strategies necessary to support their plans for positive change.

COURSE OBJECTIVES

- Students review stages of change model and discuss how the model can help them to successfully implement lifestyle changes.
- Students examine the reasons they did not successfully change their behavior after the first OWI.
- Students evaluate their own alcohol consumption history and patterns.
- Students examine the effects of alcohol and other drugs on the mind, body, behavior and driving performance.
- Students receive information about Wisconsin's OWI Laws and Penalties.
- Students explore the legal, financial and personal consequences of their current OWI as well as the consequences of another OWI conviction.
- Students practice strategies to support their plans for change in the areas of stress reduction, alcohol and other drugs refusal skills, communication and anger management.
- Students examine drinking patterns including use, abuse and addiction, and assess their drinking patterns.
- Students develop a Personal Change Plan to avoid further OWI related behavior.

TRAFFIC SAFETY POINT REDUCTION THEORY

The Traffic Safety Point Reduction course is designed to provide basic safe driving concepts. Emphasis is placed on modifying high risk driving behaviors and attitudes, and developing a change plan to reduce the risk of traffic violations and crashes.

COURSE OBJECTIVES

- Students examine their driving behavior
- Students examine high risk driving conditions
- Students review defensive driving strategies
- Students receive information about the effects of alcohol and other drugs on driving performance
- Students work on three designated change goals throughout the course
- Students develop a personal change plan to reduce the risks of traffic violations and crashes

COURSE LENGTH & CAPACITY

Group Dynamics Program

- Hours of Instruction: Minimum 21
- Enrollment: Maximum 15

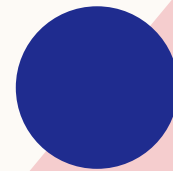
Multiple Offender Program

- Hours of Instruction: Minimum 30
- Enrollment: Maximum 12

Traffic Safety Point Reduction Theory

- Hours of Instruction: Minimum of 12
- Enrollment: Maximum of 20

INSTRUCTOR QUALIFICATIONS



INSTRUCTOR QUALIFICATIONS

In accordance with Trans. 106.07, Group Dynamics Traffic Safety Program Instructor Qualification; Trans. 106.08, Multiple Offender Traffic Safety Program Instructor Qualification; and Trans. 106.09, General Traffic Safety Program Instructor Qualification:

- Two years of related occupational experience in traffic, AODA treatment, or counseling.
- Complete 45 hours of college level coursework in one or more of the following areas: traffic safety studies, AODA education/treatment, or group process/counseling. Trans. 106.07
- MOP - Teach 3 or more group dynamics courses or have a bachelor's or master's degree in counseling or similar.

Best Practice: Law enforcement traffic officers & OWI assessors can only teach in another county.

INITIAL INSTRUCTOR CERTIFICATION STANDARDS

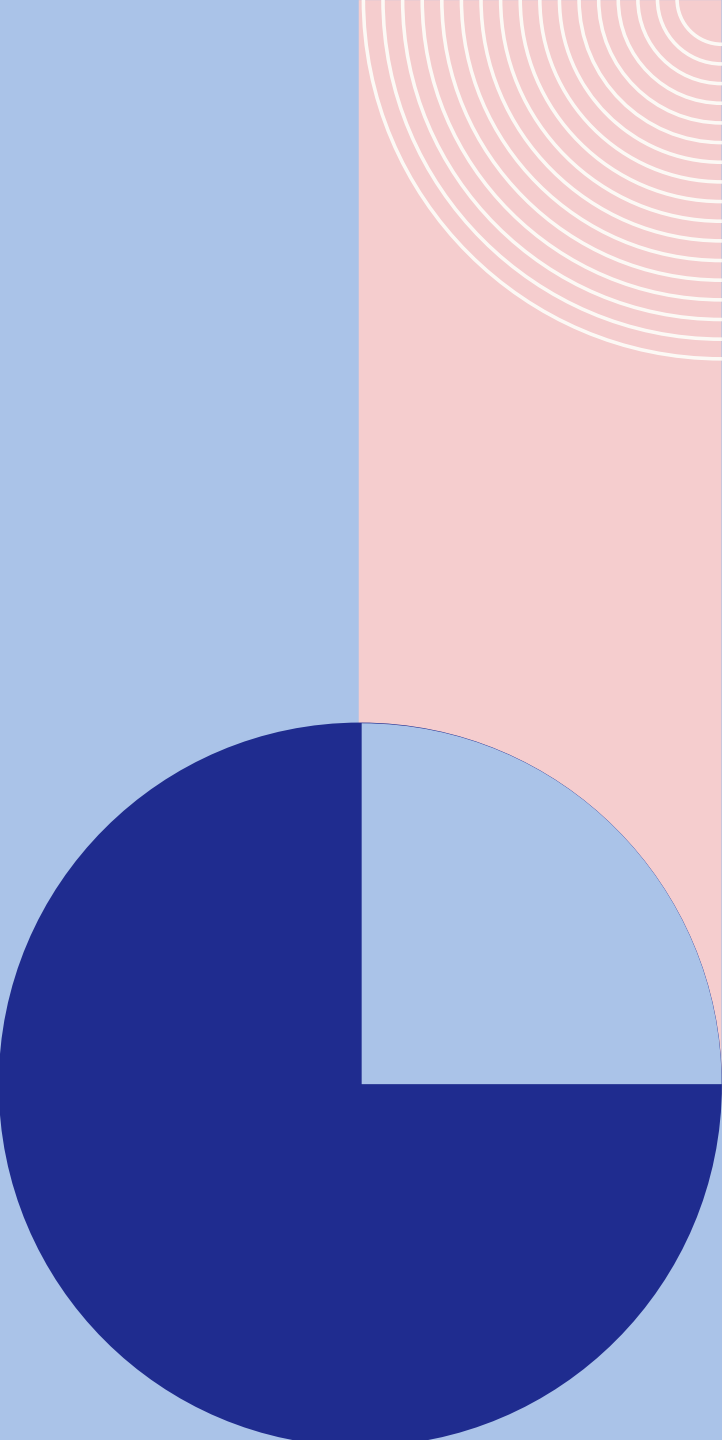
In accordance with Trans. 106.06, Instructor Certification Standards:

- Hold a valid driver's license from the Department of Transportation (DOT) or from the state in which the person resides.
- Maintain less than 6 points in the last year on their driving record.
- Observe all class sessions of a course taught by a certified program instructor.
- Submit to the department an instructor certification application.
- Certification is valid from the date of approval until July 1 of an odd-numbered year.
- Instructor must teach the course within 6 months of the date of certification.

MAINTAINING INSTRUCTOR CERTIFICATION

- Adhere to the procedures and curriculum established by the department and the technical college.
- Teach all sessions of each course for which the instructor is certified at least once during the certification period.
- Participate in all mandatory department and in-service training activities.

RULES AND POLICIES



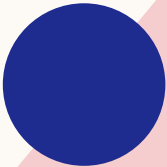
REGISTRATION RULES

- Students must contact the college within 72 hours of their assessment. Failure to do so will result in noncompliance (loss of all driving privileges).
- If a student fails to complete a course or drops from a course, he or she will have 10 days to reregister.
- Students have one year to complete the course in its entirety. This would include the 3-month follow-up for MOP.
- An assessment that was conducted over 1 year ago is considered expired and will not be accepted by registration. If your assessment has expired, you need to contact the assessment agency for a new assessment.

GENERAL RULES

- You cannot be late, and you must attend all sessions, except as noted below:
 - A student may be late only once and only if he or she is less than 20 minutes late. Students who are more than 20 minutes late or students who are late more than once automatically fail and must retake the course
 - A student may be excused for one class session and only if a class meets for three hours or less. There is no excused absence for a class that meets for more than three hours. The only excused absences are medical and death of an immediate family member. A doctor's excuse or obituary is required proof.
- Students must participate appropriately in all class activities and complete all in class and homework assignments.
- No alcohol or drug use prior to or during class. Students suspected of alcohol or drug use will be asked to leave and be required to go for a new assessment.
- Disruptive behavior during class will result in removal from the class and automatic failure. In addition, student may be referred for another assessment before being allowed to re-register.

ALTERNATIVE EDUCATION AND COLLEGE VARIATION



ALTERNATIVE EDUCATION

Justifications:

Major employment barrier – working out of state for an extended period

Major medical – chronic conditions causing physical barriers or surgery with extended recovery

Language barrier, literacy barrier, developmental disability, mental illness, or cognitive deficit that aren't supported

Approval by the local traffic safety school coordinator - DHS 62.07(5)(a)2.c.

Assessment agency must document completion with DOT

VARIES BY COLLEGE

Follow-up reminders

Check-in

Extensions

Registration

Electronic submission
of assessment document

Interpreter & student support
services

THANK YOU

Robin Rupp

Ruppr@gtc.edu

Krissa Reeves

Kreeves1@cvtc.edu