



WISCONSIN DEPARTMENT  
*of* HEALTH SERVICES

Children and Family Program  
Specialists:  
Lori Wittemann  
Rachel Lettner

Friday, May 12

# Introduction to the Bureau of Children's Services Programs

# Children's Services Programs

- Birth to 3 Program
- Children's Long-Term Support (CLTS) Program
- Children's Community Options Program (CCOP)
- Wraparound Milwaukee
- Children with Medical Complexities Program
- Katie Beckett Medicaid

# What is the Birth to 3 Program?

A special education program that:

- Serves children under the age of 3 with delays or disabilities and their families.
- Provides services to support the child's growth, learning, and participation in everyday activities.



# Who can enroll?

- Children under the age of 3
- Concern about the child's development in one or more of the following areas:
  - Cognition/learning
  - Social and emotional
  - Motor
  - Communication
  - Self help



# How to Apply

- [Contact](#) the county Birth to 3 program  
Call or email
- You will be assigned a service coordinator (SC) who:
  - Schedules a home visit to learn about the program
  - Provides information and forms to understand your role and decisions to make
- Connect with the SC with questions

# How are services provided?



- Family partners with a team of providers
- Incorporates:
  - Strategies to help you help your child learn
  - One provider having a team to support them in serving you and your child
  - Services occurring in your home and community, within your routines and activities

# Services at a Glance

- For families
- Explains supports and services available to families in the Birth to 3 Program ([P-03011](#))



## Wisconsin Birth to 3 Program Services at a Glance

The early intervention supports and services below are available through the Birth to 3 Program. All services are based on the individual goals and outcomes of your family and child. Decisions about services are made together as a team, and put your family and the child first.

You will partner with a service coordinator, who will help you locate and coordinate needed services and supports. All services are provided and funded based on federal requirements. The Birth to 3 Program allows you to access services that help you meet your goals and outcomes, no matter what the funding source is.

Early intervention services help the child learn, interact, and thrive at home, in child care, and during other everyday activities. Learning and growing happens in the places your family spends time and during activities the child finds fun and engaging. The Birth to 3 Program provides services where you are every day. This helps the child develop and practice new skills in the places they will use them.

### Primary Services

<b>Service Coordination</b> Helps your family and child access early intervention services and understand your rights. Service coordinators schedule evaluations, help create the service plan, and connect you with what you need.	<b>Occupational Therapy</b> Helps the child build new skills by practicing day-to-day activities. These new skills will help them play, move, and interact with the world around them. These services help increase the child's ability to take part in daily routines and activities at home, in the community, and other places your family spends time.	<b>Speech and Language Services</b> Help the child understand and use language. Speech services include identifying concerns and finding activities that can strengthen muscles so the child can make clear speech sounds. Speech services might also help the child use a speech device and refer them to medical or other professional services when necessary.
<b>Special Education</b> Engages the child in activities that support their learning and development. This includes ideas that help them grow, learn, play, and get along with others. Individualized strategies are shared to help the child's learning, skills, and overall development.	<b>Physical Therapy</b> Helps support the child's physical and muscle development. This helps them move, play, and participate in day-to-day activities. Physical therapy services also help reduce pain and prevent or minimize physical disabilities.	



WISCONSIN DEPARTMENT  
of HEALTH SERVICES

# Where to Learn More

## All in for Kids

*A Birth to 3 Program Family Newsletter*

All in for Kids is a newsletter created to keep you and your family informed about the services available through the Birth to 3 Program. The newsletter is published by the Wisconsin Department of Health Services.



## [Information for Families on the Birth to 3 Program](#)

- All in For Kids: Birth to 3 Program family newsletter

This newsletter is mailed to families and can also be found on the webpage listed above.

- Sign up for the Birth to 3 Program information for families and participants [email list](#)

Signing up will give you access to the All in for Kids newsletter.



# What is the CLTS Waiver Program?

- The CLTS Waiver Program provides services for children and young adults under the age of 22 with disabilities.
- Supports and services are available to help waiver participants live their best lives in their home and community.



# Who Can Enroll?

The CLTS Waiver Program is available to those who are:

- Younger than age 22
- Eligible for a full-benefit Wisconsin Medicaid program
- Live at home, in foster care, or in another approved setting
- Need a level of care that people get at:
  - A hospital
  - A nursing home
  - An institution for people with developmental disabilities

# How to Apply

1 of 2

- Contact the [waiver agency](#) in your county of residence. Let them know you are interested in services for your child.
- Plan a home visit with the waiver agency.
- Learn if your child is functionally eligible.

The support and service coordinator (SSC) uses an online tool, called the [Functional Screen](#). It helps find out whether a child is eligible for the program.

# How to Apply

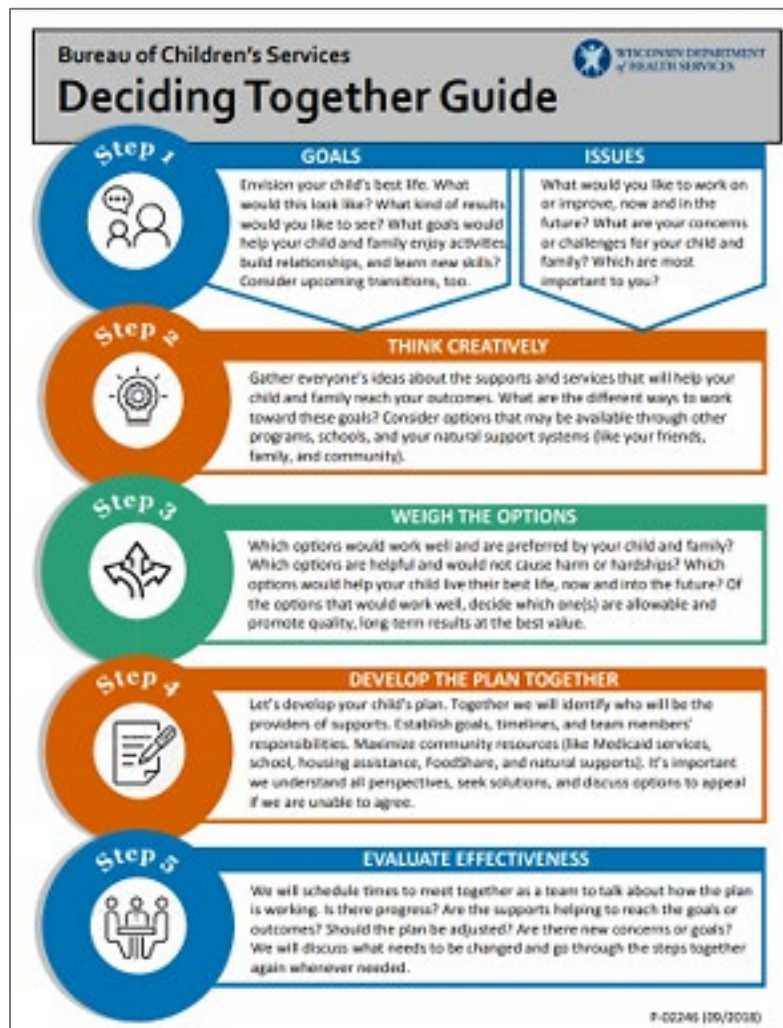
2 of 2



- Stay connected to the SSC. If eligible, the county waiver agency will help enroll your child.
- Your family will work one-on-one with the SSC. The SSC is a new partner in your journey, and will help you navigate community and CLTS services.

# What is Deciding Together?

A step-by-step guide ([P-02246](#)) for collaborative decision-making to develop individual service plans (ISPs).



# Services at a Glance

Explains supports  
and services  
available to families  
in the CLTS Program  
([P-02570](#))

## Children's Long-Term Support Program

### Supports and Services at a Glance

The supports and services below are available through the Children's Long-Term Support (CLTS) Program. All decisions made about supports and services are made together as a team.

A support and service coordinator will work with your family to decide which services help meet your family and child's unique goals.

#### Support Services

##### Child care

Help for your family to find care for the child when they need added support, or when the child is over 12 years old and needs supervision.

##### Day services

Services that help the child get involved in their own community by providing regularly scheduled activities for part of the day.

##### Respite care

A short term break for your family when a trained worker provides care for the child. Respite care helps ease daily stress the family and caregivers.

##### Personal supports

Help that ensures the child is doing their daily activities, and that the activities are meeting their needs. Personal supports promote independence and safety for the child in their home and community.

③ Example: Help to take their own medication, use transportation, and do household tasks

##### Community competitive/integrated employment

Help for a child to get and maintain a job in the community that is available to anyone else and pays the same amount.

##### Transportation

Transportation for the child so they can get to places in their community to meet their goals and needs. This is for nonmedical and nonemergency transportation.

① Example: Bus tickets, train passes, taxi vouchers, ride-share

##### Participant and family-directed goods and services

Services, supports, and items that help the child meet a goal, and which your family cannot get through another CLTS Program service or Medicaid.

##### Discovery and career planning

Help for a child to develop skills to get a job.

③ Example: Interviewing skills, how to dress for an interview



# Where to Learn More

## Information for Families on the CLTS Program

- All in For Kids: CLTS family newsletter

This newsletter is mailed to families and can also be found on the webpage listed above.

- Sign up for the CLTS Information for Families and Participants [email list](#)

Signing up will also make sure you get the All in for Kids newsletter.

## All in for Kids

*A CLTS Program Family Newsletter*

All in for Kids: CLTS Program is a newsletter created to keep you and your family informed about the supports and services available through the CLTS Program. The newsletter is published by the Wisconsin Department of Health Services.





# What is the Children's Community Options Program?

- CCOP services help your child become more independent and involved in their community.
- CCOP builds upon other supports and services, including the CLTS Program.





# Who Can Enroll and How to Apply

## ■ Who?

- Be younger than age 22
- Have a disability
- Live in an eligible setting, such as at home, a relative's home, or a foster home
- Meet an eligible level of care needed for CCOP based on the functional screen

## ■ How?

Contact the [waiver agency](#) in your county of residence. Let them know you are interested in services for your child. They will help with next steps.

# Where to Learn More


- [DHS CCOP Website](#)
- Children's Services Programs: Cross Comparison ([P-02991](#))

**CHILDREN'S SERVICES PROGRAMS: CROSS COMPARISON**

This chart explains key features of three programs the Wisconsin Department of Health Services (DHS) operates for children with disabilities or exceptional needs and their families. These programs work with families and children to meet their health care needs and increase access to their community. The eligibility criteria for the three programs are similar. Children who qualify can enroll in any or all three of the programs at the same time. Please note that there are different rules on which services are covered through each program when using these programs together or with other health benefits.

	Children's Long-Term Support (CLTS) Program	Katie Beckett Medicaid	Children's Community Options Program (CCOP)
<b>What is it?</b>	<p>The CLTS Program supports children with disabilities and their families through supports and services that help children grow and live their best lives in their home and community.</p> <p>Each child and family works with a support and service coordinator to identify supports and services they need to meet their goals. Funding can be used to access a range of services based on an assessment.</p>	<p>Katie Beckett Medicaid provides access to Wisconsin Medicaid services for children whose parents' income makes them ineligible for other Medicaid programs.</p> <p>The child can receive medically necessary services and equipment through Katie Beckett.</p>	<p>CCOP can pay for a range of supports and services not covered by other insurance or Medicaid.</p> <p>It can pay for a one-time need or can build on other supports and services, including the CLTS Waiver Program.</p>
<b>Who should I contact?</b>	<p>Contact the county agency (<a href="https://www.dhs.wisconsin.gov/clts/contact.html">www.dhs.wisconsin.gov/clts/contact.html</a>) where you live and let them know you are interested in services for the child.</p>	<p>Contact Katie Beckett staff by calling 888-786-3246 or email them at <a href="mailto:DHSKatieBeckett@dhs.wisconsin.gov">DHSKatieBeckett@dhs.wisconsin.gov</a>. Do not email confidential information.</p>	<p>Contact the county agency (<a href="https://www.dhs.wisconsin.gov/clts/contact.html">www.dhs.wisconsin.gov/clts/contact.html</a>) where you live and let them know you are interested in services for the child.</p>
<b>How do I apply?</b>	<p>The first step is to contact the person or agency in the "Who should I contact" section above to start the process of learning what the child is eligible for. There are two parts to determining eligibility:</p> <ul style="list-style-type: none"><li>• <b>Functional eligibility.</b> Someone from the program will schedule a time to meet with you, typically in your home. During the visit, information will be gathered for a screening tool used to determine whether the child is "functionally eligible" for any of the programs listed here. You don't need to know what program you are interested in yet. The functional screen results will show what programs the child is eligible for. The results of the screen and options will be shared with you.</li><li>• <b>Financial eligibility.</b> Each program has different income limits, which will be discussed with you when you apply.</li></ul>		

**INITIAL STEPS**

 WISCONSIN DEPARTMENT of HEALTH SERVICES  
P-02991 (02/2022)

# What is Wraparound Milwaukee?



System of care for children with emotional, behavioral, and mental health needs and their families.

- Delivers a comprehensive and flexible array of mental health and substance use services
- Puts the child and family at the center with a team of professionals and natural supports

# Who Can Enroll and How to Apply

## ■ Who?

- Child diagnosed with a serious emotional, behavioral, mental health, or substance use disorder
- Involvement in either the Youth Justice or Child Welfare system
- Medicaid eligible

## ■ How?

Call the Resource and Referral Line at 414-257-7607 to start the referral process

# Services at a Glance

A variety of mental health and substance use services are covered which could include:

- Individual, family, or group therapy
- Mentoring
- Skill Development
- In-home therapy
- Parenting Support
- Medication Management



# Where to Learn More

- [DHS Wraparound Milwaukee](#)
- [Wraparound Milwaukee](#)

# What is the Children with Medical Complexities Program?

- Provides case management services to children with complex medical needs who receive their health care through Medicaid
- Three health care centers:
  - UW Health
  - Children's Hospital of Wisconsin
  - Marshfield Clinic



# Who Can Enroll

- Children under age 26
- Diagnosed with chronic health conditions meeting **all** the following criteria:
  - Involving three or more organ systems
  - Requiring three or more medical or surgical specialists
  - At least one of the following in the preceding 12 months:
    - ◆ One or more hospital admissions totaling five or more days
    - ◆ Ten or more visits to tertiary clinics (with a medical or surgical subspecialist)



# How to Apply



Obtain a referral from your primary care provider or health care specialist.

# Where to Learn More

- Talk to your health care provider
- [Children's Hospital of Wisconsin \(Milwaukee\)](#)
- [American Family Children's Hospital \(Madison\)](#)
- [Marshfield Children's Hospital \(Marshfield\)](#)



# What is Katie Beckett Medicaid?

Katie Beckett Medicaid is a special Medicaid program for children under 19 years with long-term disabilities or complex medical needs, living at home with their families.



# Who Can Enroll and How to Apply

## ■ Who?

- Be under age 19.
- Meet the definition of “disabled” under the Social Security Act.
- Live in an eligible setting.
- Not have income in their name that is more than the current income limit for those living in an institution.

## ■ How?

Call an eligibility specialist at 888-786-3246.

# Where to Learn More

- [DHS Katie Beckett webpage](#)
- Children's Services Program: Cross Comparison publication (P-[02991](#))

Questions?

# Contact Us

Find our contact information for the region you reside in:  
[Children and Family Program Specialist Assignment Map](#)

Learn more: [Helpful Resources for Families in Children's Services Programs](#)