

2019 Annual Report



Transformation


RAWHIDE
YOUTH SERVICES

CEO Message

Dear Family and Friends,

When I wake up in the morning, I always remember why I chose to dedicate my life's work to Rawhide Youth Services. Every day, I witness caring staff transforming the lives of our youth as they heal from unimaginable trauma, abuse, depression, anxiety, and suicidal thoughts. Youth in need of community counseling and therapy services continue to increase every year. In December, we expanded our therapy services by opening a new Counseling Center in Fond du Lac to provide equine-assisted therapy, trauma-based therapy, and in-school counseling. In 2019, we welcomed over 500 troubled Wisconsin youth from 43 counties who needed our help seeing through the darkness, experiencing unconditional love, and learning how to be healthy, successful adults when they return to their communities.



Rawhide achieved a 4-year accreditation through the Council on Accreditation (COA) in October for its residential, group home, foster care, community counseling services and business practices. Rawhide demonstrated excellence in meeting over 400 standards in every area of our programs and operations. This accreditation provides peace of mind to our clients and regulatory agencies that youth will receive the best services available in an effective, safe and legal fashion, and reassures our contributors that their funds are used effectively and efficiently.

In May, we sadly said goodbye to our beloved co-founder and dear friend, Bart Starr. Our sorrow was mixed with gratitude when the Green Bay Packers Organization and the Starr family chose Rawhide's New London campus for the Bart Starr Commemorative Celebration in September. About 3,000 supporters and 65 former Green Bay Packers players attended the event. Bart and Cherry's love for troubled youth is unmatched and we are forever grateful for the legacy they created at Rawhide that will endure for generations to come.

We continue to be blessed with generous donors who make our work possible. In October, we witnessed just how great the generosity is in our community at our first The Main Event Gala Dinner in the Lambeau Field Atrium, where we hosted over 500 friends and successfully raised \$260,000.

I feel so blessed to have the opportunity every day to work with great staff members and partners to touch the lives of hurting youth so they may survive and thrive. We could not do this work without your love, prayers, and support. Thank you, and God bless!

Sincerely,

A handwritten signature in black ink that reads "Alan B. Loux". The signature is written in a cursive, flowing style.

Alan B. Loux

President and CEO, Rawhide Youth Services



RAWHIDE, INC.

E7475 Rawhide Road
New London, WI 54961

Rawhide.org
(920)982-6100
info@rawhide.org

COUNSELING CENTER LOCATIONS:

Appleton

Westhill Professional Park
446 Westhill Blvd., Ste. 6
Appleton, WI 54914

Greater Milwaukee

Bank Five Nine
5555 N. Port Washington Road,
Ste. 207
Glendale, WI 53217

Green Bay

916 Willard Drive, Ste. 100
Green Bay, WI 54304

Fond du Lac*

W3950 WI-23 Trunk
Fond du Lac, WI 54937

New London*

E7475 Rawhide Road
New London, WI 54961

Shiocton*

N5367 Mayflower Road
Shiocton, WI 54170

***These locations also offer CHAPS
Equine-Assisted Therapy services.**





Transformation



Our Mission

Being dependent on God, we inspire and equip at-risk youth and their families to lead healthy and responsible lives through family-centered care, treatment, and education.



RAWHIDE
YOUTH SERVICES

2019 Highlights

The Main Event Gala 2019

Rawhide's first annual gala, The Main Event, was nothing short of spectacular! We had 552 attendees help us raise over \$260,000 so we can continue transforming the lives of our youth. Guests were amazed at our vintage circus theme that covered the Lambeau Field Atrium and enjoyed magic acts and circus entertainers, including fire performers, stilt walkers, aerialists, and more!



The event included a live auction and a heartfelt speech from Green Bay Packers player J.K. Scott. We feel so blessed to have had the Green Bay Packers Organization as our presenting sponsor. Thank you to all who attended, and we hope to see you at our Jungle Safari-themed Gala Oct. 15, 2020!

New Counseling Center Grand Opening

After more than five decades of working to overcome trauma and mental health issues throughout Wisconsin, we are so happy to have opened our new Counseling Center in Fond du Lac last December! It is truly an exciting time for members of the community we will serve at our new location, and the students we will assist in the school district.

This new location is an additional mental health resource that will help lower the barriers between Fond du Lac's at-risk youth and its community. Through our effective equine-assisted therapy, as well as youth and family counseling services, our experienced therapists specialize in trauma-focused therapy and suicide prevention.

Bart Starr Commemorative Celebration

We were humbled to have been chosen by the Starr family and the Green Bay Packers Organization to host the Bart Starr Commemorative Celebration to honor the life and legacy of one of Rawhide's greatest heroes. Cherry and Bart Starr, Jr., along with dozens of Bart's former teammates, shared their favorite memories and experiences about the legend.

Rawhide staff and youth felt truly blessed to see thousands of lifelong fans attend this powerful moment on our New London campus. The day was comprised of a variety of fun, family activities, including a youth football camp, face painting, bounce houses, mini Packers Hall of Fame exhibit, food trucks, and Rawhide facility tours. Thank you to all who attended and made this celebration an unforgettable experience!



THE MAIN EVENT GALA



NEW COUNSELING CENTER GRAND OPENING



BART STARR COMMEMORATIVE CELEBRATION

"And do not forget to do good and to share with others, for with such sacrifices, God is pleased."

- Hebrews 13:16



To hurting and at-risk youth and their families, Rawhide is a resource for life-changing skills, training, counseling, and therapies that offers residential and community-based services to equip youth—and their families—with the tools to build healthy relationships and behaviors that will help them overcome life’s challenges. We believe every person, regardless of where they are coming from, was created to be loved and respected, and is worthy of a healthy and fulfilling life.

Standard Residential Care Program

Rawhide’s Standard Residential Care Program benefits court-ordered, at-risk boys from 11 to 18 years old. Youth homes are operated and staffed by both resident and non-resident staff who are available to the youth 24 hours a day. The homes provide a positive, structured, and supportive family environment. Outcomes focus on mental health, self-control, respect, and responsibility. Youth also attend our year-round, on-campus Starr Academy school, and participate in group and individual therapies at our Counseling Center in New London.

About Face Community Service Corps Program

Our About Face Community Service Corps is a success-driven, intensive, residential program with an emphasis on behavioral changes. This program focuses on high school class improvement, vocational training, and community service, in which job trainers work side-by-side with the boys on construction, landscaping, and disaster relief projects. The About Face students alternate between participating in community service projects for two weeks and attending Rawhide’s on-site Starr Academy school.

Alumni Services

Alumni Services are provided to youth who have gone through Rawhide’s programs. Services to alumni can include continued counseling, educational support, as well as many other types of assistance.

Occupational Therapy

Through our comprehensive assessment process, youth can participate in occupational therapy services to help improve their cognitive, physical, sensory, and motor skills, as well as their confidence.

Transitional Group Home

Our Transitional Group Home, located on the New London campus, provides coaching, training and assistance to youth ages 13–18. The group home helps youth achieve their goals of life skills and applying them through community-based social, spiritual, recreational, educational, and employment opportunities. Group home students attend school and have jobs in their local communities to help with their transition back to their families or independent living.

Treatment Foster Care

Rawhide offers fully licensed Treatment Foster Care to serve youth from the community or youth who have made a satisfactory adjustment in Rawhide’s residential program. Foster families and youth are fully supported through our programs and can choose to attend their local school or have the option to join Starr Academy.

Youth and Family Counseling Services

Our counseling services provide a range of individual, group, and equine-assisted therapy for at-risk youth and their families struggling with behavioral and mental health conditions. Therapists use a blend of therapeutic styles and approaches (i.e., cognitive, behavioral, emotional, social, and spiritual) tailored to meet the needs of a client. Our counseling centers are located in Appleton, Fond du Lac, Green Bay, Milwaukee, New London, and Shiocton.

CHAPS Equine-Assisted Therapy

Our equine-assisted therapy benefits youth coping with behavioral and mental health issues, including anxiety, depression, trauma, ADHD, and suicidal ideation. Sessions are conducted under the guidance of a therapist who specializes in equine therapy at our New London, Fond du Lac, and Shiocton locations.

Work Experience Program

Our Work Experience Program prepares at-risk youth for successful employment after discharging from Rawhide. This program cultivates the skills and work ethic that will assist youth in obtaining and maintaining employment once they return to their community. On campus work opportunities are available for youth in the vehicle program, equine program, facilities, and food service.

Starr Academy

Starr Academy, located on the New London campus, is a fully accredited high school through the Wisconsin Religious and Independent Schools Accreditation (WRISA). Students earn credits in core subjects, such as math, reading, social studies, science, and physical education, while also earning elective credits and participating in job-training programs. Class sizes are small so each student can receive personal, one-on-one attention.

Our Statistics

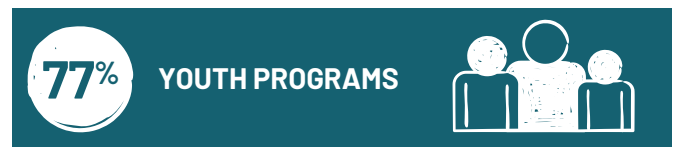
At Rawhide, we have a very clear goal: to transform the lives of the youth we serve. To help them through the darkness. To show them how to turn away from thinking, behaviors, or situations that can only lead to more hurt, toward a healthy and fulfilling life. Transformation is the outcome we always aim for, and it's the promise we make to the youth and their families who come to us for help.

FINANCIAL STATEMENT

SOURCES OF SUPPORT (\$17.0 million)



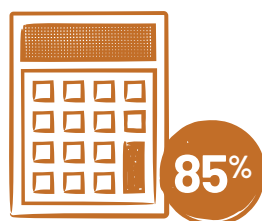
HOW FUNDS WERE USED (\$15.8 million)



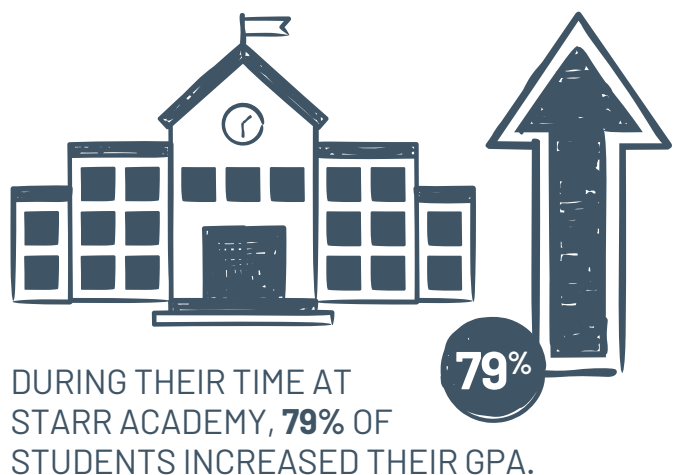
EDUCATION



UPON ENTRY TO STARR ACADEMY, **63%** OF STUDENTS WERE BELOW GRADE AVERAGE IN READING.



UPON ENTRY TO STARR ACADEMY, **85%** OF STUDENTS WERE BELOW GRADE AVERAGE IN MATH.



"For I know the plans I have for you," declares the LORD, "plans to prosper you and not to harm you, plans to give you hope and a future."

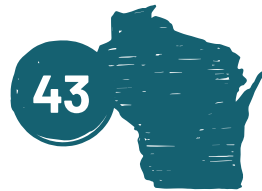
- Jeremiah 29:11



Transformation

SERVICES

RAWHIDE RESIDENTIAL AND OUTPATIENT PROGRAMS SERVED CLIENTS FROM **43 WISCONSIN COUNTIES.**



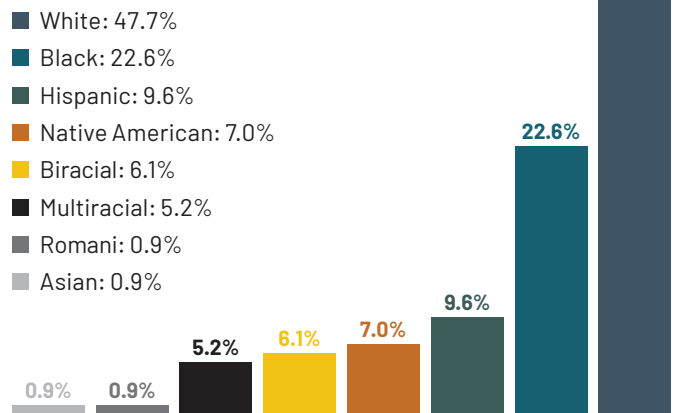
RAWHIDE SERVED **510 YOUTH AND FAMILIES** THROUGH RESIDENTIAL AND COMMUNITY COUNSELING SERVICES.



RAWHIDE SERVED **57% FEMALE AND 43% MALE** CLIENTS THROUGH RESIDENTIAL AND OUTPATIENT SERVICES.



ETHNICITY OF YOUTH IN RESIDENTIAL CARE:



FAMILY FEEDBACK

Social workers gathered the following feedback from families who placed their youth at Rawhide in 2019.

SERVICES TO FAMILIES:

- 93% excellent
- 7% very good

EMPLOYMENT TRAINING:

- 85% excellent
- 8% very good
- 7% good

BEHAVIORAL COUNSELING

- 100% excellent



VEHICLE PROGRAM

In 2019, more than 8,000 vehicles were donated to Rawhide to raise money for our at-risk youth.

7,457
Cars and Trucks

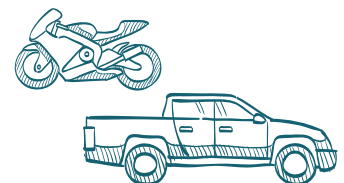
337
Boats and Jet Skis

106
Motorcycles

88
Misc.*

19
Campers/Pop-ups

2
Motor Homes



*Misc. includes boat motors, lawn mowers, trailers, carts, etc.

Our Stories

Every one of us is worthy of respect. We were created to be loved and are deserving of a chance to live a life of potential and promise. At Rawhide, that's what we believe. And that's why you can count on us for the counseling, treatment, and healing that have equipped countless young women and men to discover the joy of a healthy and fulfilling life.

Meet Austin

One of the biggest lessons Austin Harris said he learned during his time at Rawhide was how to manage his time and help him move forward.

While living in foster care at 16 years old, Austin was convicted of a crime that landed him at Lincoln Hills. Later, the court decided he should attend Rawhide as a step-down placement to improve his behaviors, build a good work ethic, and graduate high school at Starr Academy. That was a lot for an at-risk youth to take on coming right out of juvenile detention, but Austin took it day by day, using the skills he was learning at Rawhide. Before he knew it, it was his graduation day.

The ceremony was so special to him that he remembers the exact date and keeps his speech and congratulations cards from the staff and family who attended. Today, Austin is still connected with some of the Rawhide staff who made the most impact on him. Mr. Troy from the Woodshop, guided Austin through his Work Experience Program as he completed multiple maintenance and construction projects. By the time Austin was discharged, he was inspired to seek a career in construction, and is in the process of searching for jobs.

One of the most important friends he made at Rawhide was a tall horse named Memphis. Any time Austin was having a bad day, Memphis would nudge him to show his concern. Over time, they built a trusting relationship, allowing Austin to feel loved without judgment for his past.



"I'm thankful that God put me at Rawhide, because I believe it was my second chance at life," he said. "I thank the living unit and school staff, case manager, job trainers, and therapists for being there for me through the rough times. ... I believe that God is using Rawhide as a place to build success stories."



"Rawhide taught me that if you learn to manage your time, you're able to take control of your life, get things done, and move forward."

- Austin





Transformation

Meet Finley

When Finley Peterson started struggling with bedtime routines at night and painful stomachaches during the day, her mother Kristina immediately called Finley’s Primary Care Physician. First they tried different diet changes to eliminate any food allergies, but Kristina knew it was something more – and she was right. It was anxiety.

The doctor agreed to send Finley to therapy. With the close proximity and immediate availability, they all agreed Rawhide’s New London campus was the best option. Shortly after, Finley started weekly therapy appointments with Lindley Wilkerson. To make Finley more comfortable, Kristina sat in on the first few sessions.

After that, she only sat in on the beginning of the sessions to update Lindley on the positives and negatives from the previous week.



At each session, Lindley provided Finley fidget toys for focus, a bouncy ball for activity, and a white board for drawing. After her first session, Finley and Kristina were given tools to implement into their bedtime routine. Within a couple of days, Finley said she noticed a drastic change in her stomachaches in frequency and intensity.

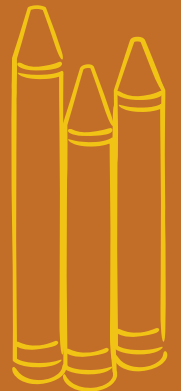
“I’ve been feeling a lot better,” Finley said. “My stomachaches and playing at school with friends have been better, too. If I have issues with my friends, Lindley suggests what I should and shouldn’t do.”

Overall, their experiences with Rawhide have been positive, from scheduling appointments to seeing immediate results. Now Finley is back to enjoying her favorite activities, including playing outside with friends, catching frogs, cuddling with her cat, swimming, and creating art.



“Thank you for helping me build my confidence and deal with a lot of my feelings.”

- Finley





Transformation

Meet Skylar

At just three days old, Skylar entered the foster care system. When she turned two years old, her devoted foster parents adopted her.

While she was happy growing up in a safe and loving home with them, she began having questions and mixed emotions about her birth parents that she bottled up. Eventually her emotions exploded in bouts of anger through concerning written pieces at school and clenching her fists until her nails dug into the palms of her hands. She also struggled to make simple decisions, such as choosing a folder or backpack for school.

By fourth grade, Skylar's parents agreed to send her to Rawhide for therapy because of its Christian-based mission and convenient location.

"I think knowing you're adopted and having questions about birth parents is an extra challenge for a lot of people," said Skylar's mom. "So therapy was always in the back of my mind for her."

At first, Skylar didn't look forward to her appointments. But after many card games, drawing out her feelings, and writing short stories with her therapist, Dorothy Vrhovnik, she grew more comfortable. Before long, Skylar began opening up to her parents about her feelings and learning how to process emotions without reverting to anger. She discovered listening to music while swinging on her playset and writing stories made her feel better.

After two years of therapy, Skylar's mom said Rawhide made a "night and day difference" in her daughter's life. She is now 14 years old and about to start high school with the tools to keep her anxiety-free and honest about her feelings with friends and teachers.

*Disclaimer: The name and photo used were changed to protect the identity of the youth.



"Everyone at Rawhide was very friendly and open and they didn't judge you at all. Thank you!"

- Skylar



Major Donor

Meet Miron Construction

Miron Construction is one of Rawhide's generous donors and partners.

Last year, Miron partnered with us for two substantial construction projects in preparation for our memorable Bart Starr Commemorative Celebration. In just two months, the Miron crew gave the Rawhide Carriage House and Café 15 buildings beautiful updates, including interior and exterior improvements, such as masonry, new stone face, landscaping, new siding and windows, paint, and much more.

Joel Stave, Project Manager at Miron, joined the endeavor in late July, saying President and CEO Alan Loux and Director of Facilities Brendan Ganser were great to work with. They banded together to ensure all parties felt good about the project and timeline. Joel said he appreciated Alan's openness and appreciation for Miron's honesty and willingness to accomplish the task ahead.

"Having the chance to work with those guys really made the process go so much smoother because they were so quick with their decisions and didn't want to hold up any of the process," Joel said.

Some of Joel's favorite memories from the project happened in the café. Brendan offered to buy lunch for the 15-20 Miron workers on site every day, allowing their crew and the Rawhide staff an opportunity to socialize together.

"It turned into more of a family atmosphere than just a construction site because of the way people at Rawhide welcomed us and dealt with the construction that was going on," he said.

When the work was completed, Joel and his team, exhausted but pleased, took a step back to admire what they had accomplished.

"As we got closer to the Sept. 14 date of the Bart Starr event, you could start to see we were going to meet our deadline," he said. "It was a pretty proud moment for all of us."

Miron was also a significant presence and donor at Rawhide's first Gala event in 2019. Miron's President and CEO Dave Voss often says, "We're building people's dreams." Seeing how Dave's words matched his actions inspired Joel in his work, drawing him even closer to the mission of Rawhide.

"To see Rawhide as more than just a client or business partner, but a partner in their shared vision and goal is pretty cool," Joel said. "The biggest thing for me is the people who work there that have a strong passion to help as many young people as they can. The time and effort people put into an organization like Rawhide is purely built from the goodness of their hearts - putting young people in a position to succeed."

Rawhide and Miron look forward to continuing to grow their relationship in the many years to come!



BEFORE



AFTER

"The biggest thing for me is the people who work there that have a strong passion to help as many young people as they can."

- Joel Stave

#15 League

Rawhide's #15 League creates a lasting legacy through planned giving.

Becoming a member of the #15 League is a great way for our loyal supporters to leave a lasting legacy for Rawhide. The #15 League was created to recognize and thank those special people who have remembered Rawhide with a planned gift.

The list to the right includes all the individuals who have joined the league by adding Rawhide as a beneficiary to their will or living trust, life insurance policy, retirement account, charitable trust, donor advised fund, or charitable gift annuity.

We are grateful to all those who have selflessly become members. Their legacy of support will help ensure that Rawhide can continue to carry out its mission to transform the lives of at-risk youth for generations to come.

"I don't know where I would be without Rawhide. Thank you for donating so youth like me can have a second chance!"

- Jamarion

Thank you to all our donors for their generous hearts!

#15 League Members:

- Anonymous (6)
- Lawrence C. Andersen III
- Bryan & Rebecca Blankfield
- Wayne & Mary Boss
- Elsie A. Chattillion
- Constance Danforth
- Bob and Pat Endries
- Cara Lynn K. Foster
- Esther R. Gehrt
- Peter and Dolly Gerhardt
- Don & Audrey Geyer
- Carol M. Gross
- Dr. & Mrs. Richard Hilsabeck
- Ray J. & Mary M. Hosmer
- Catherine Jacobs
- Kay Johannes
- Janet King
- Dorothy J. Kohlhagen
- William Kohnen
- Donald D. Kubichek
- Alan and Lori Loux
- Harry & Dianne Marek
- Thelma C. Meyer
- Richard B. Meyers
- Catherine Pink
- John & Patricia Pospisil
- Thomas & Marlys Regan
- Gary & LuAnn Williams

2019 Estate Gifts Received:

- Ronald A. Bodart
- James F. Brahm
- Richard M. Bush
- Dolores Koch



The Endries Family

Because of Bob and Pat Endries' passion to help troubled youth and serve God, they recently included Rawhide as a beneficiary in their estate.

"If Rawhide was not there doing the work, these young people would continue down a troubled path, and Lord only knows where they'd end up," said Bob.

Throughout the years of donating time and money to Rawhide, they know firsthand the drastic, positive impact our programs and services have on youth in our communities. Seeing the youth change their course in life made it easy for the Endries to decide to join our exclusive #15 League to continue supporting Rawhide beyond their lifetime.

During one of Bob's visits to Rawhide, he noticed a youth who seemed to "hide in his shell." Bob pulled the boy aside and told him that while he'd made a mistake, it didn't mean it would define his life if he could focus on proving who he's going to be in the future. The next time Bob saw the youth, he witnessed a more cordial and healthy young man. Moments like this have reinforced the Endries' respect for Rawhide's faith-driven mission.



"We just want to help after our lifetime," said Bob. "Even though we won't see the result of that, we have confidence the result will be good."

They said being part of the #15 League is also a tribute and thanks to the Starr and Gillespie families for their vision and founding of Rawhide.

"We, as donors, are doing some of God's work," Bob said. "He wants us to invest in people, especially the troubled and poor. I think by gifting to Rawhide, you're really making an investment in a young person's future. You're making an investment to help them through some troubled times, and it's a pleasure and a responsibility for us to help each other."



It's never too late to plan for the people and causes you care about!

For more information about becoming a member of the #15 League, please contact Sean Tiernan at (920) 531-2591 or stiernan@rawhide.org.

Our Donors

Thank you to our donors for their generosity!

We are grateful to Rawhide's donors, partners, and friends who are making a difference in the lives of at-risk youth and their families. Because of you, young men and women are finding hope and building positive futures.

\$25,000 and Above

Victor and Christine Anthony Family Foundation, Inc.
Estate of Ronald A. Bodart
Estate of James F. Brahm
Estate of Richard M. Bush
Theda & Tamblin Clark Smith Family Foundation, Inc.
Faith Technologies, Inc.
Food Depository Fund
Forest County Potawatomi Foundation, Inc.
Free S.P.I.R.I.T. Riders
Bernice C. Gebhard
Green Bay Packers, Inc.
Zenon C.R. Hansen Foundation, Inc.
J.J. Keller Foundation, Inc.
Estate of Dolores Koch
Frank G. & Betty J. Koller Beneficiaries Trust
Alan and Lori Loux
Nicholas Family Foundation, Inc.
Dale R. & Annette L. Schuh
Bart and Cherry Starr Foundation, Inc.
Super Bowl of Golf Charity Outing

\$10,000 - \$24,999

Aylward Family Foundation, Inc.
AZCO, Inc.
Bryan J. & Rebecca Blankfield
Bleser Family Foundation, Inc.
Jane Bradley Pettit Foundation
Frank G. & Frieda K. Brotz Family Foundation
Susan T. Brown
Robert W. & Susan T. Brown Family Foundation
Burmester Charitable Trust
Clothing Across America

Ann S. Courtenay
Bernard A. & Mindy Dahlin
Bernard E. & Alyce Dahlin
De Pere Christian Outreach Corp.
Robert & Patricia Endries
Favre 4 Hope
George & Dorothy Gabrielse Family Stewards Fund
Michael & Katherine Gasick
Paul O. & Carol H. Gehl Family Foundation
James C. & Geraldine B. Christoph Fund
The Grammie Jean Foundation
Greater Milwaukee Auto Auction
Green Bay Packers Hall of Fame
Violet Haelterman
Ron C. & Pauline P. Heim Charitable Fund
Susan R. Kath
Kaztex Foundation, Inc.
K.C. Stock Foundation, Inc.
Kimberly-Clark Corporation
George Kress Foundation, Inc.
Miller Electric Manufacturing Co.
Miron Construction Co., Inc.
Pringle Family Charitable Fund
Puelicher Foundation, Inc.
Schneider National Foundation
Sensient Technologies Foundation, Inc.
John M. Sheldon
Francie Luke Silverman Foundation
Speaker Family Foundation
Gustave R. & Patricia K. Steffen Revocable Trust
David V. Uihlein Foundation
Myra M. & Robert L. Vandehey Foundation
Sy & Bernice Ward Designated Fund
Wisconsin Department of Justice
Neal & Deborah K. Wunderlich
Jean Zitzler

\$5,000 - \$9,999

Alta Resources
Lawrence Andersen, III
Aileen S. Andrew Foundation
Anon Charitable Trust
Andrew & Barbara Aylward
E. W. & Christine Aylward
Louise Aylward
Richard J. & Amy Aylward
Daniel & Sue Began
Darlene Bosin
Brakebush Family Foundation, Inc.
Capital Credit Union Charitable Giving Fund
Dawes Rigging & Crane Rental, Inc.
DigiCOPY Corp.
Easter Foundation, Inc.
Edward L. Fitzgerald Foundation Trust
Lawrence J. & Kathleen E. Gentine Family Charitable Fund
Hamilton Roddis Foundation, Inc.
Nelson G. & Vera C. Hicks Charitable Foundation
Jerome J. & Dorothy H. Holz Family Foundation
Elizabeth C. Hood
Violet & Harold Jaeke Foundation, Inc.
William P. and Dorian S. Jordan Foundation
James & Mary Kabacinski Charitable Fund
J.W. Kieckhefer Foundation
Kolosso Toyota
David Loux
Madison Packer Backers, Inc.
Masters Gallery Foods, Inc.
William J. & Susan Matheson
Colleen Mc Grath
Dale D. Meyer & Kathleen Tesker-Meyer
Jon F. & Patricia J. Myers
Neuville Motors, Inc.



Oneida Nation of Wisconsin
Oshkosh Corporation Foundation, Inc.
Pioneer Roofing, Inc.
Kurt B. & Carol E. Rothe
Jack R. & Maida Sawyer
Sentry Insurance Foundation, Inc.
Robert and Carol Sorrentino
Charitable Fund
A. Sturm and Sons Foundation, Inc.
Sub-Zero Wolf Foundation, Inc.
Tailwaggers Doggy Daycare
Alan C. Tetzlaff
Thiel Construction & Realty, Inc.
Thrivent Matching Gift Foundation
Valley Kids Foundation, Inc.
John S. & Germaine Vicchiollo
Vision 2 Serve, Inc.
Walmart Store #1471
Marjorie A. Wentworth
Forrest & Mildred Werling Family Fund
The Whitecap Mountains
WLUK - Fox 11 News

\$1,000 - \$4,999

Alliant Energy Foundation - Matching Gifts
Robert A. & Peggy L. Altman
Ameriprise
Leland J. & Linda Anderson
Apex Electrical Design, Inc.
Appleton Alliance Church
Associated Bank
B & D Foundation, Inc.
John D. Baetz
Darlene A. Ballweg
Bassett Mechanical
Michael & Susan Benes
Bernatello's Foods
Robert W. Bielefeldt
William P. and Helen T. Birkemeier
Charitable Fund

Dan & Roberta Birr
BMO Private Bank
Kenneth A. Bohlman
John M. & Valerie J. Bostrom
Norman E. & Janet W. Boys
Stephen P. Bratkowski Memorial
Foundation
J. Michael Brown Family Foundation
Bruno Event Team, LLC
Robert L. & Sharon Buresh
Caledonia Community Club
David & Samantha Cameron
CBC Coating
Jeff & Karen Christopher
Frank A. & Maureen A. Colwell
Community First Credit Union
Richard A. & Sandra H. Conover
Custom Glass Products, Inc.
Constance K. Danforth
Michael R. Day
Edna Dennis
Joseph C. DeWane
Roger & Janine Diedrich
Dorsch Ford Kia
Laurie Douglas
Timothy A. & Laurie R. Douglas
Larry M. & Nancy A. Dowd
Edgerton Gear, Inc.
Paul L. Ehlers Memorial Fund
Betsy J. Elgin
Enerfab
Jeffrey R. & Rebecca J. Esker
Daniel Evensen
William J. & Brenda Everson
Excellence in Leadership
Exelon Foundation
Fantini Family Giving Fund
Carlyle W. & Marjorie S. Fay
First Baptist Church of Sister Bay
Florence Motor Sales, Inc.
Fox Cities Embroidery

Fox Cities Marathon
Fox Communities Credit Union
Fox Lake Correctional Institution
Fox Valley Technical College
John E. & Eleanore M. Frame
Jeffrey G. Frank
Fred Freitag
Kyle & Andrianna Frelich
Brendan A. & Vicki Ganser
Harvey R. Ganske
John W. & Sarah Gasper
Aaron J. Geitner
Gregory B. & Cathie R. Gill
Tom & Vergene Gillman
Donald T. Glaser
Grainger Matching Chartiable
Gifts Program
Karen Grams
Great Northern Corporation
David & Elizabeth Gregory
Warren K. & Deborah S. Griffith
Jessie Grzeca
John Haase
Nona D. Hataj
John Hawley
Hays Companies of Wisconsin
Healthcare Realty Services
Mark & Kimberly Herman
Richard B. & Diane Hilsabeck
Hobby Wheel
William O. & Judith Hoffman
Terry S. & Paula K. Homan
Ray J. & Mary M. Hosmer
Tye M. & Kaye M. Howver
HUB International Midwest Limited
Ideal Crane Rental
Curtis & Nancy Ignacio
David P. & Marjorie J. Ihle
David J. & Leslee D. Ihssen
Imaginasium
Integrity Insurance Company

Our Donors

Thank you to our donors for their generosity!

Iola Old Car Show
Catherine Jacobs
Ron Jankowski
Johnson Bank Wealth Management -
Appleton
Thomas J. & Carol Joseph
JX Enterprises, Inc.
Dean Kaczorowski
Joe Kiedinger
Pamela J. Kintz
Steve and Faye Klessig Fund
Jeff Klug
Keller Family Charitable Trust
Keller, Inc.
Klug Family Foundation Trust
Timothy K. & Christine Klunk
Robert C. & Nancy R. Knutson
Robin Koch
Susan R. Koessler
Barry W. & Linda Kolbe
Clarice Koopmans
Krause Foundation, Inc.
Paul J. & Jane D. Krause
Denis Kreft
Philip Langelin
Lappen Security Products
E. W. & Margaret Leicht Family Fund
Mark Leitner
Thomas S. Lemorande
Jodi Lorrig
Gordon D. & Elizabeth A. Loux
Lowe Manufacturing Company, Inc.
Brook Lynne
The Mail Haus, Inc.
Martin's Garage
Menasha Corporation Foundation
Charles Meyer
Rusty Meyer
Richard B. Meyers
John P. Mitchell
Modern Business Machines

Modern Woodmen Fraternal Financial
Morgan Masterpiece, Inc.
Virginia Nachreiner
Nelsonville Evangelical Lutheran Church
Endowment Fund
Sharon L. Niemann
Barbara Nilsson
Edward J. Okray Foundation
Old National Bancorp
David M. & Leah Passehl
Patriot Partners Removal
Jeffrey D. & Paula Paulson
William G. & Kathryn M. Peotter
R.D. and Linda Peters Foundation
Pierce Manufacturing, Inc.
Kenneth and Janet Pike Family Fund
Steve Pipp
Jason & Jessica Planer
Primum Bonum, Inc.
David & Patti Purcell
Quality Truck Care Center, Inc.
Donald L. & Rosalind Rahn
James A. Rank
Red Arc Media, LLC
Reid & Deanna Ribble
Timothy A. Reilley & Janet Nelson
Richard J. Resch
Gerald J. Ring
Gerhardt F. & Elaine A. Remus
Scott Romenesko
Russ Darrow Group, Inc.
Rance M. & Angie Sanders
Sam's Club - Store #6321
Francis Santora
Sargento Foods Inc.
Kaleb & Hannah Schad
Schlarman Academy
Arthur J. and Gladys K. Schmidt
Charitable Fund
Earl G. & Kim M. Schmoll
Tracy A. Schoenrock

Denita Schreier
Jeffrey P. & Leslie Schroeder
Chad Schultz
Ken & Sally Schweiger
SECURA Insurance Companies
Charitable Fund
Fran Seidl
Seifert Family Fund
Select Service Products
John S. & Mary B. Sensenbrenner
William A. & Rhonda M. Sepic
Vernon Seymour
Shamrock Club of New Dublin
Silseth Family Charitable Fund
Wade W. & Barbara L. Simpson
Laura M. Smoller
Michael J. & Susan Smullen
Snap-on, Inc.
St. John's Lutheran Church
St. John's Thrift Store
Stephen M. & Kim Sommer Borden
Timothy J. & Nancy L. Speaker
Speedy Clean, Inc.
Stalker Sports Flooring
Eric Stalker
Bart Starr Jr. & Elaena Starr
Sue and Roland G. Stephenson
Family Fund
Peter & Heather J. Stern
Gordon Stillings
Manfred E. and Gail F. Suess Fund
Victor Sumnicht Foundation
Warren Thomson
Toyota Dealer Match Program
Terry R. & Katherine Anne Tuttrup
Loren D. & Linda M. Vande Lune
Glenn Vandine
Teresa Van Horn
Joe Van Horn Chevrolet, Inc.
Matthew and Vicky Vechart Family Fund
Beverly E. Volkman



Joel K. & Tara Walker
Paul & Colleen Wasilewski
W.B.D. Foundation
WE Energies Foundation
David L. & Jacquelyn Weiland
Robert & Beverly Weber
David A. & Joan E. Wieckert
James B. & Elizabeth T. Wigdale
Gary D. & LuAnn Williams
George M. & Darlene B. Williams
Willow Creek Behavioral Health
Mark Willson
Windward Wealth Strategies
Cyrilla M. Wipperfurth
Wisconsin Public Service Foundation
Marvin E. & Nancy B. Wittrock
Wochinske Family Foundation
Wolf River Associates-Thrivent Financial
Zabrowski Family Foundation

\$500 - \$999

Abbot Machine Company Charitable
Foundation
Abby Bank
Steve Adkins
Joseph P. & Tami J. Aerts
Albany International Foundation
Amusement Devices, Inc.
Eloise Anderson & Patrick LaMahieu
Robert S. & Charlotte L. Andrus
Architects in Common, LLC
Assurant Health Foundation
Matching Gifts
Terry & Johanna Ball
Michael J. Baravetto
Shanon & Sonia Barham
Kelly J. Beyer
Gary and Nancy Bluemel Charitable Fund
Thomas M. & Elissa C. Bolger
Susan Boelter

Wayne F. & Mary L. Boss
Zeke & Mary Bratkowski
David F. & Joanne R. Brauch
Mark & Janet Brosig
Edwin F. & Sandra M. Bush
William Bush
Eve Busse
Robert P. Butler
Dennis Butz
George Butz
Thomas M. & Karen L. Camann
Elvie Case
M. Thomas & Mary R. Chemotti
Charles Clemen
Clintonville Family Dentistry
Rick Cragen
Dalum Family Foundation
Dawn Vending
Delve
Frank D. Doyle
Peggy Drummond
DTAK, LLC
Dublin Contractors, Inc.
Arthur Dumke
Anne and Richard Egan Charitable Fund
Trevor & Brenda Farrell
Boyle Fredrickson, S.C.
Dale L. & Petronela A. Fredrickson
Elite Rentals
Albert J. & Flora H. Ellinger
Foundation, Inc.
Mark E. & Diane L. Engel
Russell Erickson
Rhoda L. Esson
Dwayne Fairchild
Edward W. & Roxanne Falkner
Larry & Kayleen Ferguson
Foust Foundations, Inc.
Fred Mueller Automotive, Inc.
James E. & Barbara A. Freeman
Michael Friis

Randy L. & Candy Frye
Theodore P. Galloway
Daniel J. & Cindy L. Geiger
Larry & Deloris Gilmer
Grand Chute Lions Club
John L. & Nancy Greenwood
Griebenow Eyecare, S.C.
Carol M. Gross
Earl D. & Mary M. Gutzmer
Kathy Hanke
Vernon H. Hanson
Tony Hauser
David L. Hendrickson
Margaret L. Hill
Betty Hoeft
Carlton E. Hoffman
Holy Angels Catholic Church
Curtis Houk
Ralph F. & Rosemary J. Jahnke
Keith A. & Denise M. Johnson
David S. & Patricia Jones
Charles M. Jorgensen
Ronald J. Kaat
Allan A. & Monica T. Kahl
Kang Haggerty & Fetbroyt LLC
Dolores M. Kellner
Kenosha Christian Fellowship
Tim Kent
Russel J. & Barbara A. Kerkman
Robert J. & Dorothy L. King
Jeffrey P. & Cynthia A. Koch
Herbert H. Kohl Philanthropies
Wilbur A. & Sheron A. Kollmeyer
Frederick & Patrice Kranzusch
Kriete Truck Center-Madison
Landmark Credit Union
Bob Larsen
James A. Lecher
Jeffery L. & Dawn Lemmenes
Gretchen L. Liethen
LS Boutique

Our Donors

Thank you to our donors for their generosity!

John G. Mackowski
Marek Family Fund
Thomas Martin Foundation
Ruth P. Masse
Nicholas May
Donald A. & Karen J. Mayer
Wallace W. McCallum
Maramon & Marcia McCullick
Mark McDonel
Patrick A. & Pamela McKenna
Mike & Cyndi McCann
James B. Miller
Carol E. & Patricia Mueller
Gary J. & Paula A. Mulloy
Chris & Suzan Myhre
NADA Foundation
Phyllis I. Nault
Philip Neary Family Charitable Fund
Nancy D. Neevel
N.H. Machining, Inc.
Mark Nysted
Sadie Offenstein
Robert D. & Lois Olson
Scott W. & Donna J. Olson
Joe & Asherrie Opperman
Margaret K. Osborn
Gerald L. & Paula J. Pagel
Scott Parson
Dean E. Paszek
David H. and Suzanne J. Peck
Family Fund
Richard A. & Janet M. Pitchford
Richard A. & Cynthia L. Platz
Thomas M. & Carol E. Prijic
Professional Plating, Inc.
Daniel L. Quimby
James Raddatz
Keith C. & Cheryl A. Redding
Thomas J. & Marlys Regan
George and Jessie Rushton Charitable
Fund #2

Doran E. & Helen Ryan
Salisbury Family Gift Fund
Scott & Peggy Sampson
Paul & Jacqueline Scharping
Andy Schmidt
Virginia C. Schulz
Zach Schultz
Schwab-Vollhaber-Lubratt, Inc.
John E. Shippy
Craig Shuler
Bernice A. Sina
SMA Construction Services LLC
Luther B. & Eileen M. Smith
Collin Smyser
Sports Talk 105.1
Bradley D. Miller & Kristine J. Stover
Thomas E. & Sondra T. Streckert
Richard J. & Melanie Sweere
Frederick A. & Sharon M. Terry
Thermo-Tech Mechanical Insulation
John Thompson
Sean & Michelle Tiernan
Donald & Gwen Tushaus
Tyson Foods, Inc.
Larry & Ellen Uebelher
Daniel J. Uminski
Gregory M. Urcavich
Brian & Rebecca Vanden Heuvel
Nordon Vanden Heuvel Charitable
Giving Fund
Vicariate III North
Howard J. & Sara K. Volz
Dave & Heather Voss
Raye & Marie Walz
Warning Lites of Appleton
Waupaca Chamber of Commerce
Denise Webb
Alma Weber
Michael J. & Julie Wharton
E. G. & Paula Whitman
Dennis D. & Kathleen M. Widenski

Brian D. & Kathy S. Wieser
Edward H. & Judy Wiedeman
Wieser Brothers General Contractor, Inc.
Wild Birds Unlimited
Thomas A. & Evelyn Winter
W.I.S. Logistics
Tony Zeilinski
Thomas W. & Suzanne M. Zoch

Thank you! Together, we are transforming lives.

In addition to the donors acknowledged in this report, Rawhide received 8,009 vehicle donations, many hours of volunteer time, and generous in-kind, cash, and memorial gifts in 2019.

Rawhide has made every effort to ensure the accuracy of these donor lists. If you have an omission or discrepancy, please contact our development office at (920) 982-6100.

Rawhide Board of Directors

Eloise Anderson

Retired Secretary,
Wisconsin Department of
Children and Families

Steve Borden

Retired Vice President
of Human Resources,
Alta Resources

Bill Sepic

President and Chief Executive Officer,
Wisconsin Automobile & Truck
Dealers Association

Bryan Blankfield

Retired Executive Vice President,
General Counsel and Corporate
Secretary, Oshkosh Corporation

Kevin Schuh

Director of Corporate
Accounting,
Menasha Corporation

John Vicchiollo

Retired Director of Procurement
and Strategic Sourcing,
Bassett Mechanical

Rawhide Northeast Wisconsin Advisory Council Members

Dan Began

Retired Investment Advisor,
NAMI Board Member

Marne Keller-Krikava

Retired President and CEO,
J.J. Keller & Associates, Inc.

Joe Mauthe

Executive Director,
Pillars

Pete Dorsch

Retired former owner,
Dorsch Ford Lincoln Kia

Steve Klessig

Vice President Architecture
& Engineering,
Keller, Inc.

Jeff Miller

President and CEO,
CBC Coating, Inc.

Cathy Dworak

Director of Community Relations
and Player/Alumni Relations,
Green Bay Packers

Dennis Krueger

Superintendent,
School District of West De Pere

Ivan Schrodt

Retired Chairman of the Board,
SGS-IPS Testing

Bob and Pat Endries

Founders,
Endries International, Inc.

Jodie Larsen

Vice President of
Community Engagement,
Oshkosh Corporation

Kim Underhill

Group President North America,
Kimberly-Clark Corporation

Michael Friis

District Leadership and Professional
Development Administrator,
Green Bay Area Public School District

Bill Matheson

Chief Commercial Officer,
Schneider National, Inc.

"In everything I did, I showed you that by this kind of hard work we must help the weak, remembering the words the Lord Jesus himself said: 'It is more blessed to give than to receive.'"

- Acts 20:35





Transformation



RAWHIDE
YOUTH SERVICES

E7475 Rawhide Road
New London, WI 54961

info@rawhide.org
(920) 982-6100
Rawhide.org

