

# The Arkansas Model

Jimmy McGill, PRPS  
Arkansas Director of Peer Services

1

---

---

---

---

---

---

---

---

## Disclosure

► University of Wisconsin-Stevens Point

2

---

---

---

---

---

---

---

---

## Workshop Description

► This workshop will discuss the history and innovative practices used in Arkansas to develop, grow and sustain the Peer recovery workforce which is known as The Arkansas Model

3

---

---

---

---

---

---

---

---

## Learning Objectives

- Understand the history of Arkansas Peer Recovery
- Define best practices surrounding Peer Recovery Support
- Be able to describe the Arkansas Model
- Describe Arkansas's innovative initiatives

4

---

---

---

---

---

---

---



## Past to Purpose

5

---

---

---

---

---

---

---



## Peer recovery was non-existent

HOW IT ALL STARTED

6

---

---

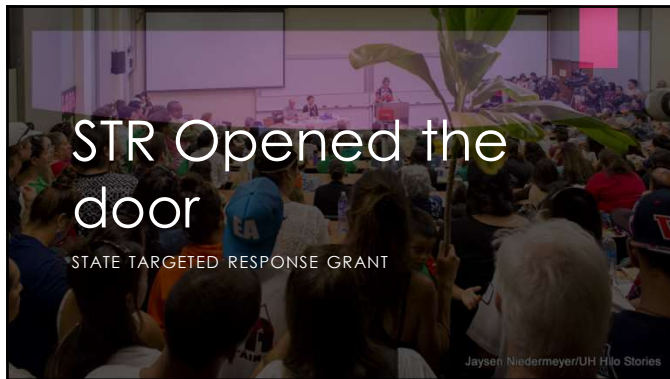
---

---

---

---

---



7

---

---

---

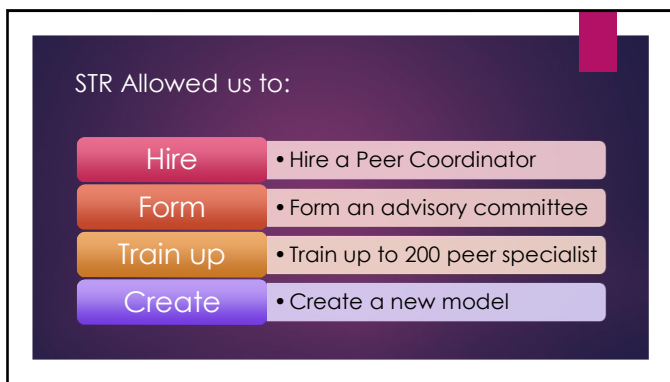
---

---

---

---

---



8

---

---

---

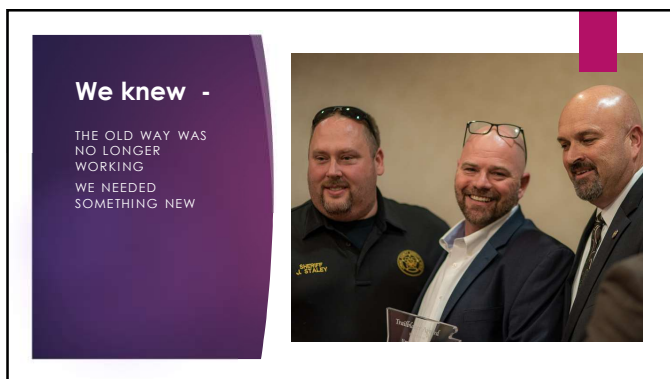
---

---

---

---

---



9

---

---

---

---

---

---

---

---

**Leadership acknowledged**

We can't arrest our way out	We can't prescribe our way out	We would have to change EVERYTHING (policies, procedures and laws)
They would need to think outside the box (Hired a felon on parole)	We would be challenging the status quo	That they didn't know anything about recovery

10

---

---

---


---

---

---

---

---



ARKANSAS IS OFF TO THE RACES

11

---

---

---

---

---

---

---

---

**BACK WITH A PLAN**



- ▶ Arkansas would:
  - ❖ Campaign for role clarity
  - ❖ Advocate for proper peer supervision
  - ❖ Create a career ladder – work force growth
  - ❖ Bring consistency to the state
  - ❖ Data that can't be argued with
  - ❖ Form APAC

12

---

---

---

---

---

---

---

---



13

---

---

---

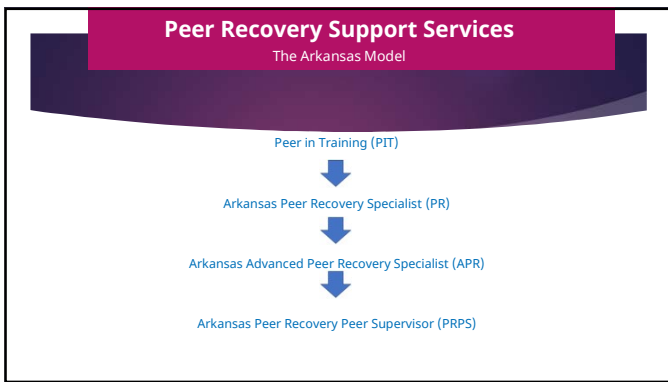
---

---

---

---

---



14

---

---

---

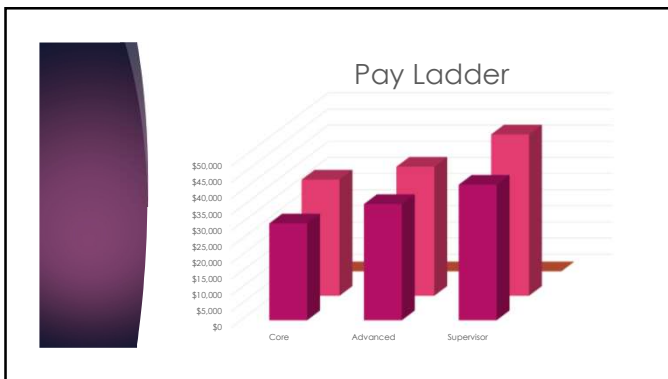
---

---

---

---

---



15

---

---

---

---

---

---

---

---

## NAADAC



- Assist DHS with the training application
- Credential all three levels of the test
- Arkansas Peer Recovery Ethics Committee
- Oversee the supervision process for DHS
- NAADAC hires a native Arkansan to manage the program

16

---

---

---

---

---

---

---

---



State Opioid Response 2

17

---

---

---

---

---

---

---

---

## PROGRAM DEVELOPMENT

- ▶ Lonoke County Jail released 14 men into society from the jail's recovery program. 12 of them have sustained recovery from Substance Use.
- ▶ 60% of the men had never been offered treatment and were not aware of the disease of addiction or that recovery was an option.
- ▶ 40% of the men had been in a traditional treatment center more than once.
- ▶ 60% of the men choose to go into recovery housing upon their release.
- ▶ 85% had been incarcerated at the same jail more than three times for over 30 days at a time.



18

---

---

---

---

---

---

---

---

## PROGRAM DEVELOPMENT

- ▶ University of Arkansas for Medical was the first to have a Peer worker
- ▶ First year – Peer linked 105 people directly to treatment
- ▶ Peer handed out over 382 doses of NARCAN
- ▶ Saved the hospital a fortune with cost savings on readmissions.
- ▶ Made the community safer.
- ▶ UAMS drove the data that opened the funded sources to create new medical programs for peer workers.



19

---

---

---

---

---

---

---

---

## PROGRAM DEVELOPMENT

74% Program success rate

### Metrics of success:

- ▶ Sustained recovery
- ▶ Drug urinalysis
- ▶ Employment
- ▶ Housing
- ▶ Family engagement
- ▶ Community engagement
- ▶ Re-offending



20

---

---

---

---

---

---

---

---

## The Money

It's cost \$56 per day to house one inmate at Lonoke County Jail. We have a total of 12 men who over the past year have not reoffended at all.

Their normal timeline for requests after release is 3 days to 6 weeks.

We have saved the communities of Lonoke County a total of \$241,920 through the PACT Project.

\$56 per day x 12 = \$672

\$672 per day x 30 (one month) = \$20,160

\$20,160 (one month) x 12 (one year) = **\$241,920**



21

---

---

---

---

---

---

---

---

### Current Arkansas Jail Peer Programs



Lonoke County  
Lawrence County  
Garland County  
Sebastian County  
Saline County  
Division of Youth Services  
Pulaski County

22

---

---

---

---

---

---

---

---



### Overdose Response Teams

Police and Peer Partnerships

- Lonoke County
- Hot Springs PD
- Johnson County
- Izard County DTF
- 6th Central DTF
- Jefferson County

23

---

---

---


---

---

---

---

---



### Hospital ED Peers

- Bradley County Medical Center
- Saline County
- UAMS
- Jefferson County
- Unity Health
- River Valley Primary Care
- Mobile Unit

24

---

---

---

---

---

---


---

---



### Recovery Community Organizations RCOs

- The Wolfe Street Foundation
- PEARL
- Exodus.Life



25

---

---

---

---

---

---

---

---

### Faith Based Recovery

- Hoover
- SOZO
- Arm 180
- DOTS
- Safe Haven Women



26

---

---

---

---

---

---

---

---

### INSIDE OUT



27

---

---

---

---

---

---

---

---



28

---

---

---

---

---

---

---

---



29

---

---

---

---

---

---

---

---



30

---

---

---

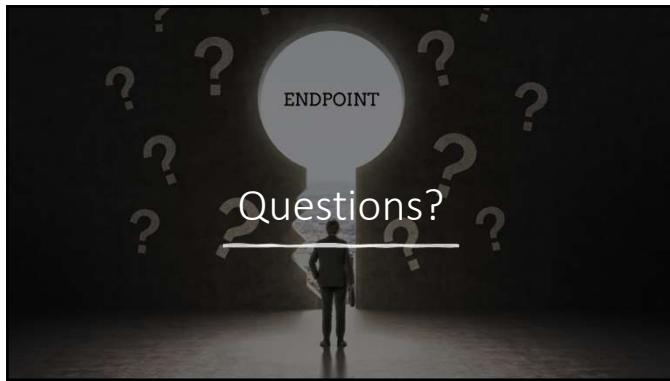
---

---

---

---

---



31

---

---

---

---

---

---

---