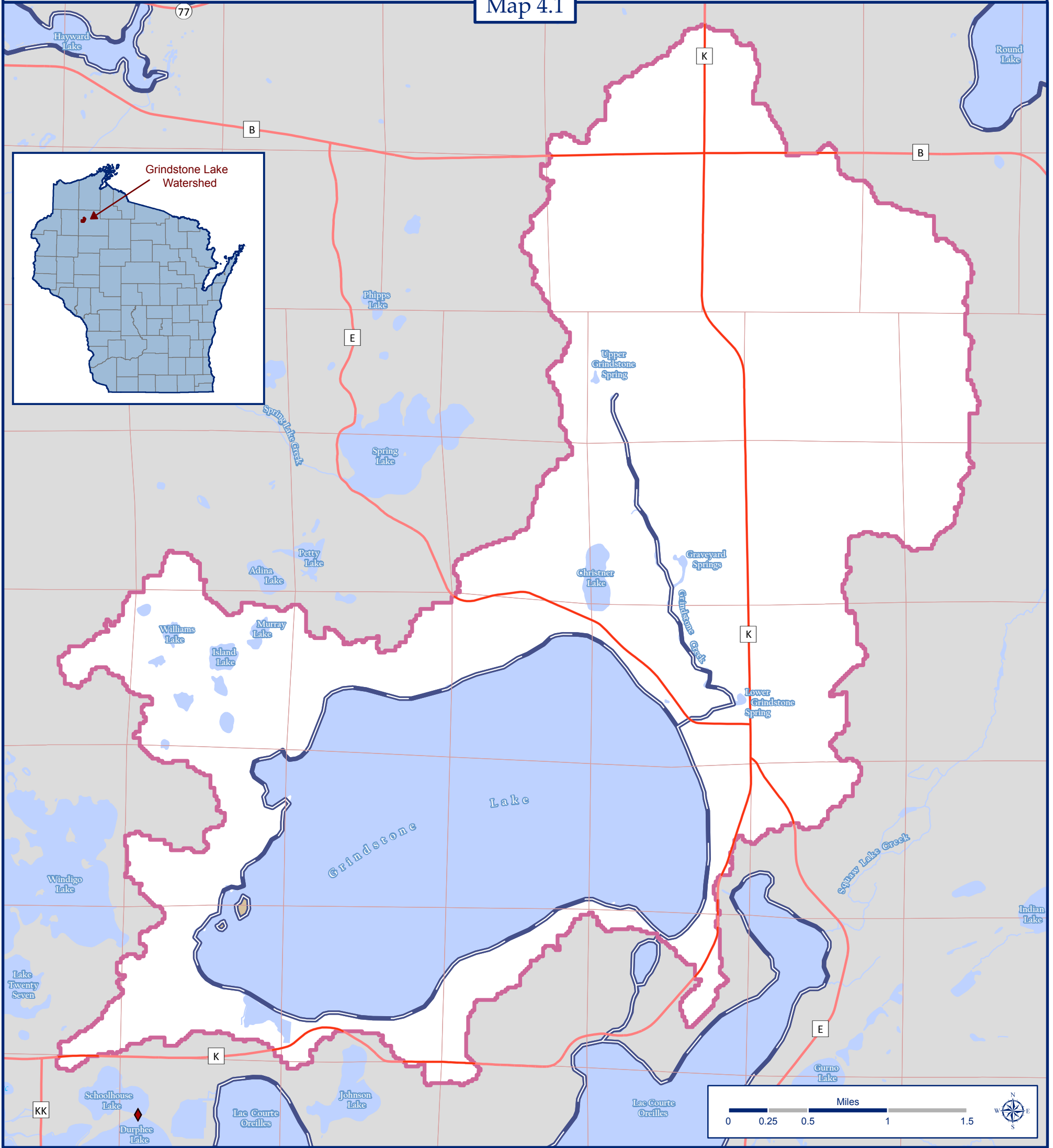


Water Resources

Grindstone Lake Watershed, Sawyer County, Wisconsin

Map 4.1



Water Resources and Watershed Statistics

	Outstanding/Exceptional Resource Waters	14 Miles
	Dam	0 Total
	Watershed Boundary	11,700 Acres
	Surface Water	3,261 Acres
	Islands	7 Acres
	Total Shoreline	24 Miles
	Public Land Survey System Section Boundaries	
	County Trunk Highway	

Grindstone Lake Watershed equals 11,700 total acres

Data Sources

Surface waters and islands from the Wisconsin Department of Natural Resources (WDNR) 1:24,000 Hydrography version 6 database, 2007.

Watersheds from the WDNR derived from 1:24,000 topographic maps.

Outstanding/Exceptional Resource Waters and Dams from the WDNR.

Surface water area statistic derived by measuring open-water or HYD-SHAI polygons.

Outstanding Resource Waters statistic derived by measuring the shoreline of assigned lakes and the centerline of assigned rivers and streams.

Total Shoreline statistic derived by measuring line segments with attributes representing single-line streams, banks, or shorelines.

Map Created by Jon Galloy & Michael Broton -- Version 2/10/2011

Funding by Wisconsin Department of Natural Resources Lake Planning Grant Program



Sponsored by the Grindstone Lake Association