

Quality of Soils for Growing Crops

Map 6.1

La Crosse County, Wisconsin






Targeting Priority Working Lands Pilot Project

Map Description

This map displays the evaluation of the quality of soils for growing crops. This evaluation considers soil productivity, important soil designations, and limitations for growing crops, such as flooding or erosion.

Legend

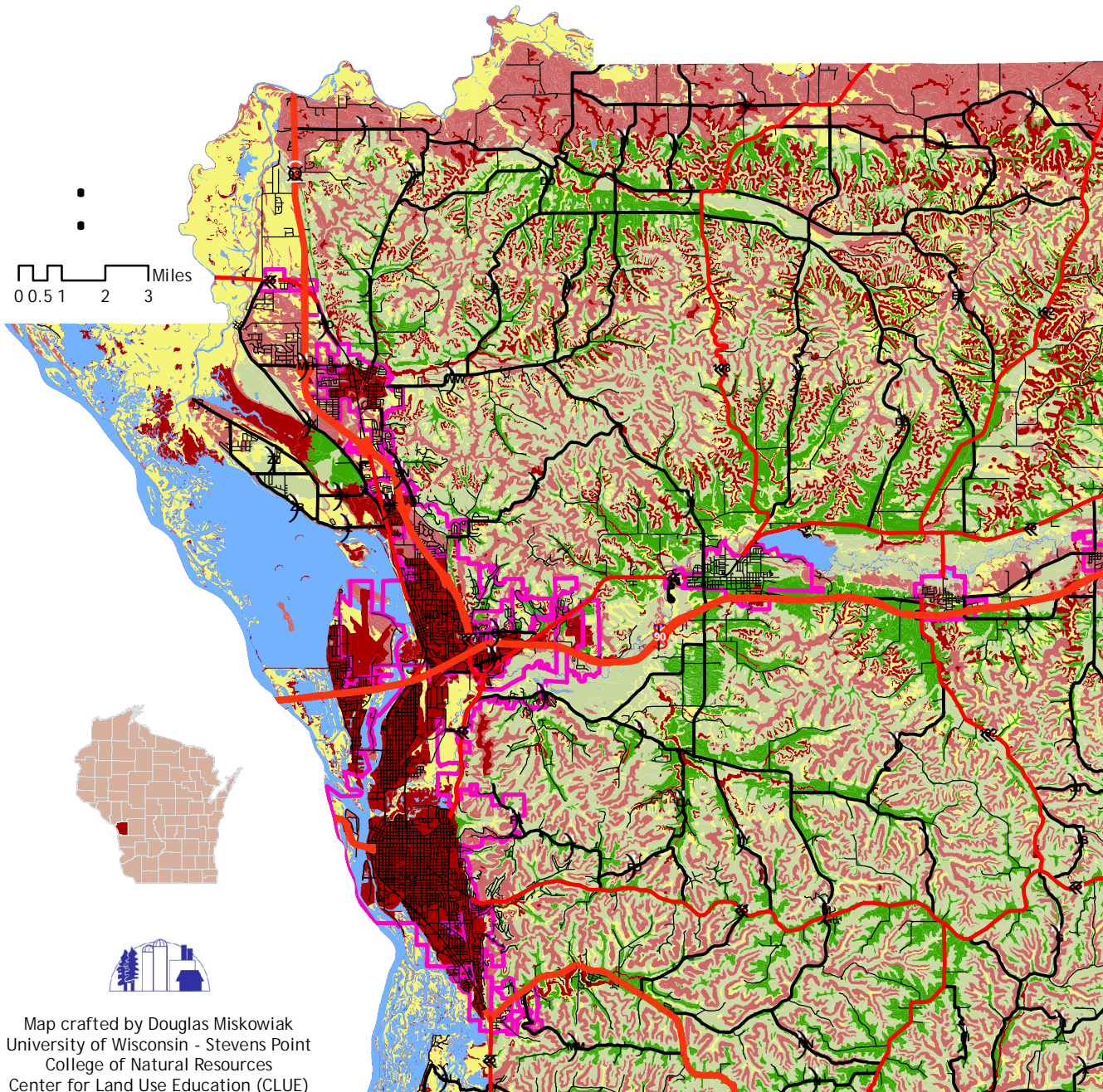
Quality of Soils for Growing Crops Score

-  0 - 3 Points (Worst Soils for Growing Crops)
-  4 - 48
-  49 - 67
-  68 - 84
-  85 - 99 Points (Best Soils for Growing Crops)

Methods

The following draft criteria were selected by the La Crosse County Working Lands Committee (see handout for details).

- Important Farmlands (weighted 5%)
- Capability Classes (weighted 5%)
- Corn Productivity (weighted 60%)
- Oats Productivity (weighted 30%)



Map crafted by Douglas Miskowiak
University of Wisconsin - Stevens Point
College of Natural Resources
Center for Land Use Education (CLUE)