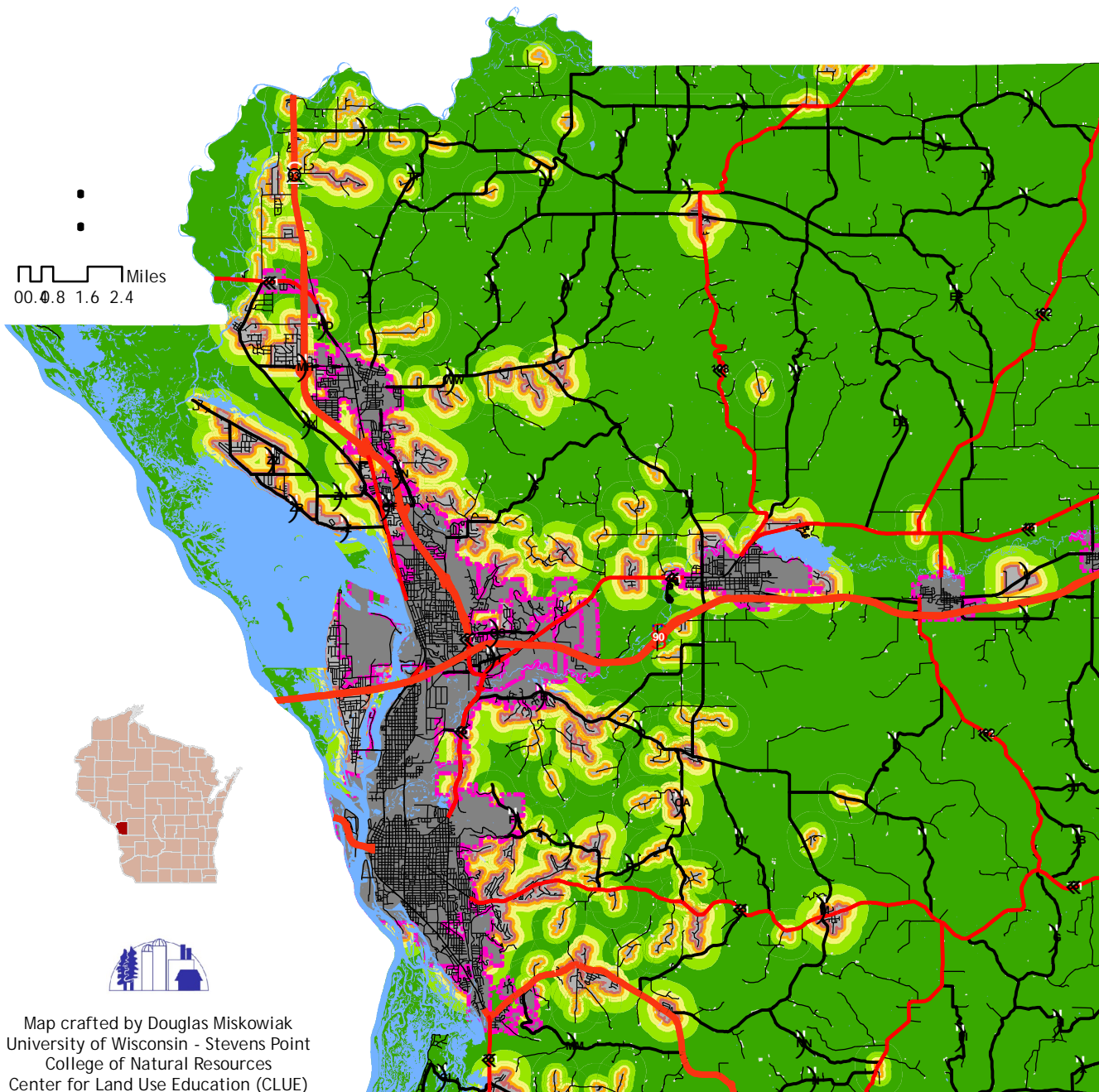


Compatibility with Surrounding Land Uses Map 6.3

La Crosse County, Wisconsin

Targeting Priority Working Lands Pilot Project



Map Description

This map displays the evaluation of working lands based on their compatibility with surrounding land uses on a scale of 0-100 (least to most compatible). Working lands further away from clustered development are more compatible than working lands in close proximity to clustered development. This analysis does not include development within city and village boundaries.

Legend

Compatibility with Surrounding Land Uses

- 0 Points (Least Compatible with Working Lands)
- 25
- 50
- 75
- 100 Points (Most Compatible with Working Lands)
- Cities and Villages
- Clustered Development
- Dispersed Development

Methods

The following draft criteria were selected by the La Crosse County Working Lands Committee (see handout for details). Developed land uses within 330 feet of other developed land uses were aggregated into clusters. Clusters smaller than 10 acres were not buffered.

Clustered Development \geq 40 acres

- Adjacent = 0 Points
- 330 - 660 feet = 25 Points
- 660 - 1320 = 50 Points
- 1320 - 2640 = 75 Points
- >2640 feet = 100 Points

Clustered Development >10 , but <40 acres

- Adjacent = 25 Points
- 330 - 660 feet = 50 Points
- 660 - 1320 = 75 Points
- >1320 feet = 100 Points

Map crafted by Douglas Miskowiak
University of Wisconsin - Stevens Point
College of Natural Resources
Center for Land Use Education (CLUE)