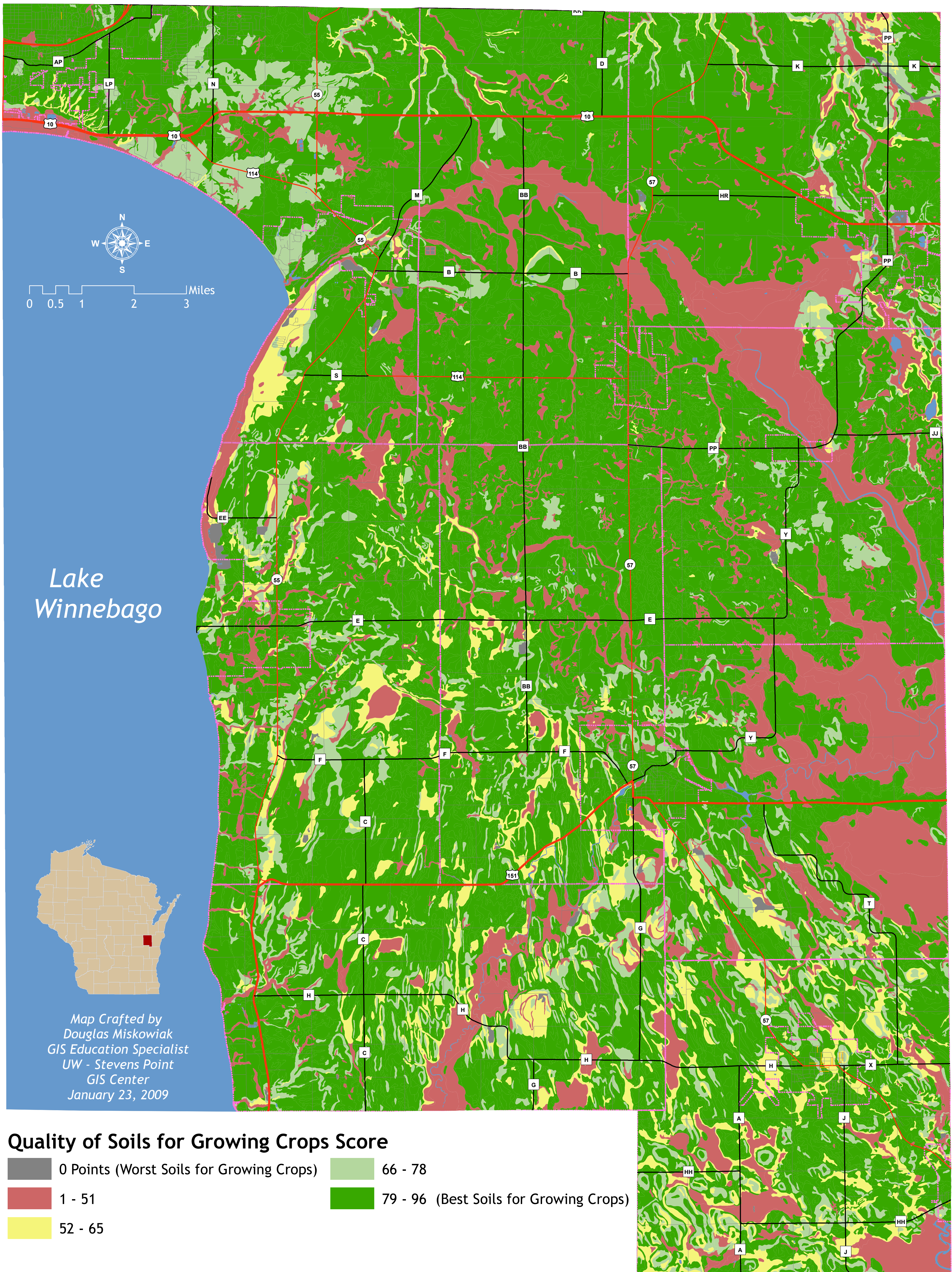


Quality of Soils for Growing Crops

Map 6.1

Calumet County, Wisconsin

Targeting Priority Working Lands Pilot Project



Map Description

This map displays the land evaluation of soils in Calumet County, Wisconsin. A land evaluation measures the quality of soils for growing crops and considers soil productivity, important soil designations, and limitations for growing crops, such as erosion or flooding.

Methods

The following draft criteria were selected by the Calumet County Working Lands Committee (see back of this map for more criteria).

- Important Farmlands (National Criteria) (weighted 10%)
- Capability Classes (Soil Limitations) (weighted 10%)
- Corn Productivity (weighted 40%)
- Alfalfa Productivity (weighted 40%)