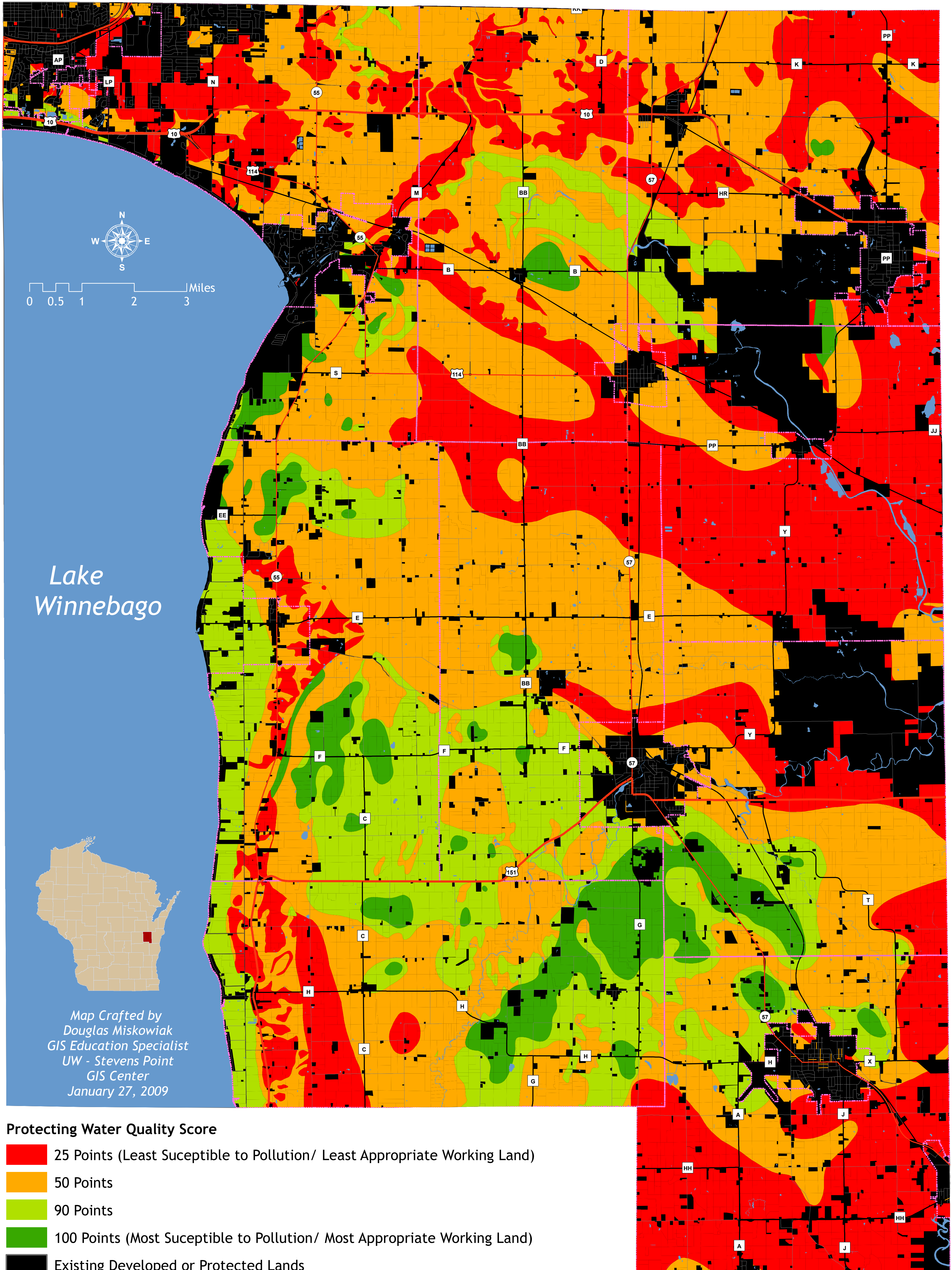


# Protecting Water Quality

## Calumet County, Wisconsin

Map 6.6

Targeting Priority Working Lands Pilot Project



### Map Description

This map displays the scoring criteria based on the ability of working lands to protect water quality. Areas most suceptible to water pollution receive the highest scores and require the greatest protection. Areas least suceptible to water pollution receive the lowest scores and require less protection.

### Methods

The following criteria were applied in developing this analysis:

- Working lands on highly suceptible aquifers with thin soils receive 100 points.
- Working lands on highly suceptible aquifers receive 90 points
- Working lands on moderately suceptible aquifers receive 50 points
- Working lands on the least suceptible aquifers receive 25 Points