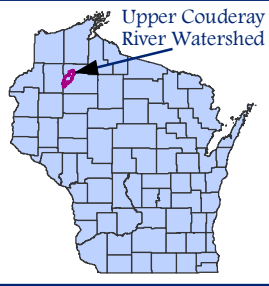


Internally Draining Areas

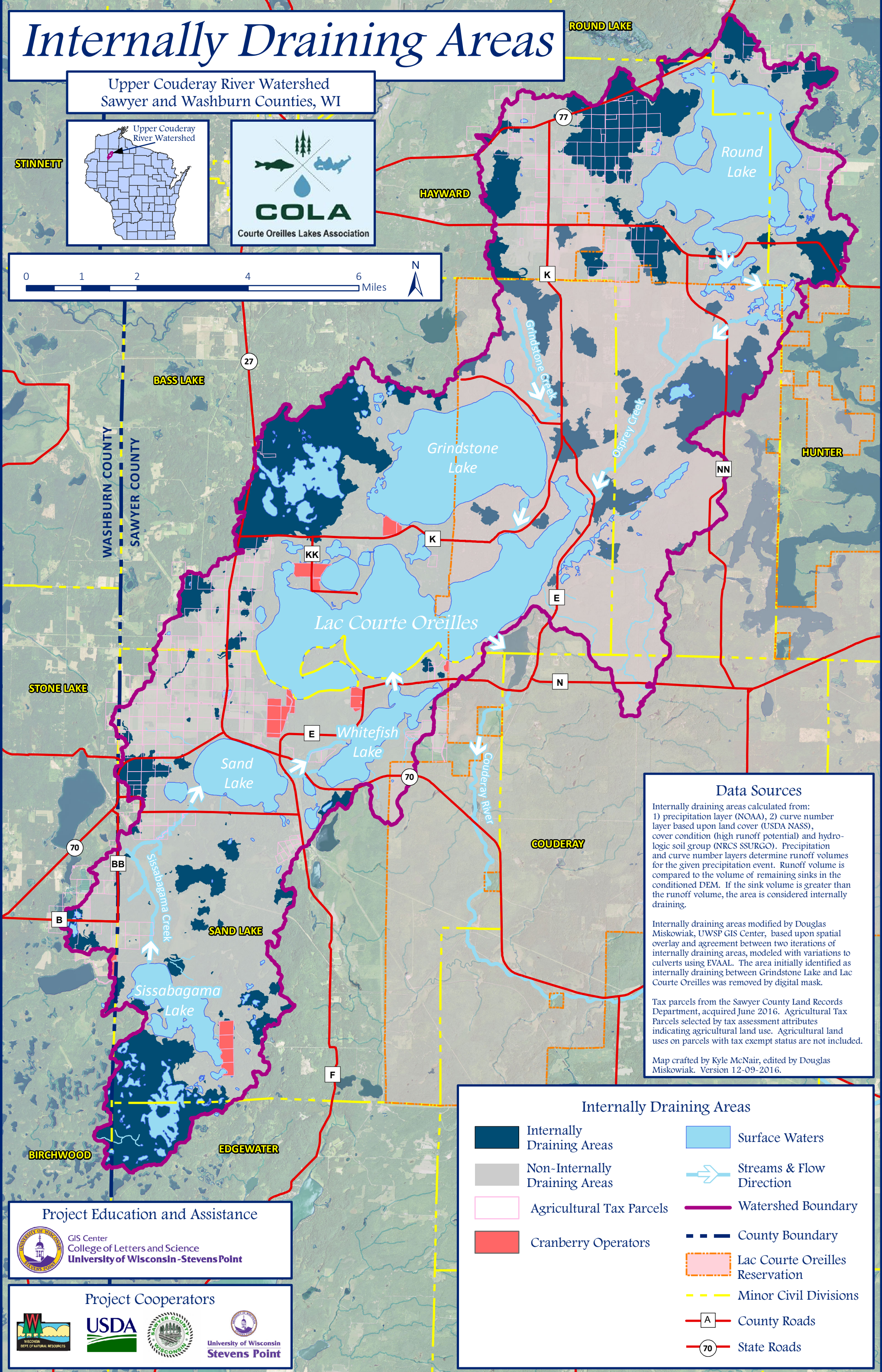
Upper Couderay River Watershed
Sawyer and Washburn Counties, WI



STINNETT

HAYWARD

ROUND LAKE



Data Sources

Internally draining areas calculated from:
1) precipitation layer (NOAA), 2) curve number layer based upon land cover (USDA NASS), cover condition (high runoff potential) and hydrologic soil group (NRCS SSURGO). Precipitation and curve number layers determine runoff volumes for the given precipitation event. Runoff volume is compared to the volume of remaining sinks in the conditioned DEM. If the sink volume is greater than the runoff volume, the area is considered internally draining.

Internally draining areas modified by Douglas Miskowiak, UWSP GIS Center, based upon spatial overlay and agreement between two iterations of internally draining areas, modeled with variations to culverts using EVAAL. The area initially identified as internally draining between Grindstone Lake and Lac Courte Oreilles was removed by digital mask.

Tax parcels from the Sawyer County Land Records Department, acquired June 2016. Agricultural Tax Parcels selected by tax assessment attributes indicating agricultural land use. Agricultural land uses on parcels with tax exempt status are not included.

Map crafted by Kyle McNair, edited by Douglas Miskowiak. Version 12-09-2016.

Internally Draining Areas

- Internally Draining Areas
- Surface Waters
- Non-Internally Draining Areas
- Streams & Flow Direction
- Agricultural Tax Parcels
- Cranberry Operators
- Watershed Boundary
- County Boundary
- Lac Courte Oreilles Reservation
- Minor Civil Divisions
- County Roads
- State Roads

Project Education and Assistance



Project Cooperators

