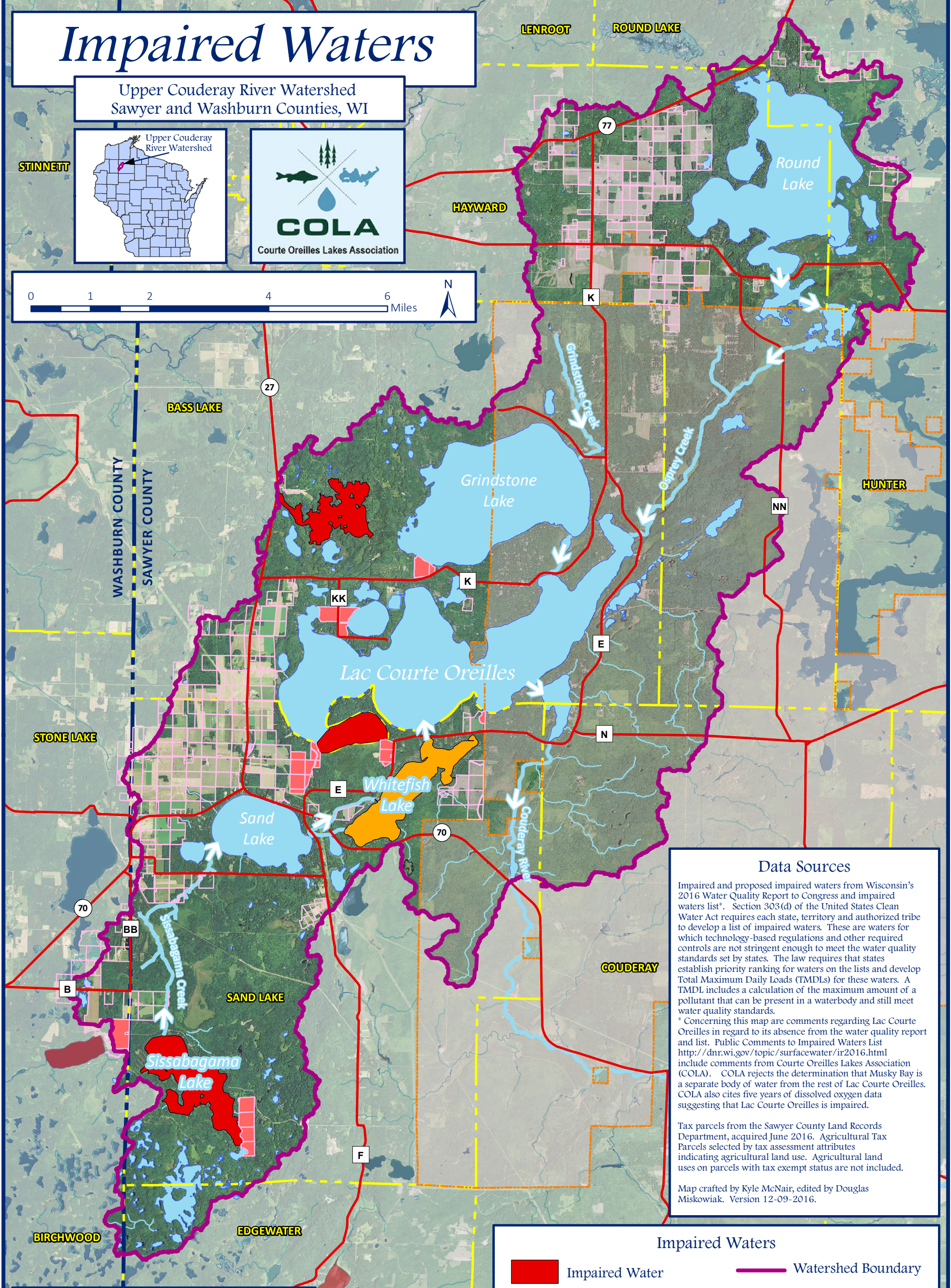
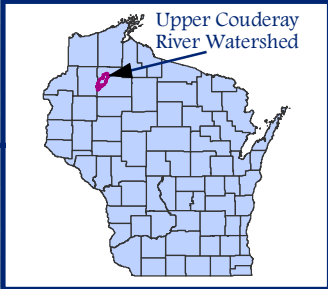


# Impaired Waters

Upper Couderay River Watershed  
Sawyer and Washburn Counties, WI

STINETT



## Data Sources

Impaired and proposed impaired waters from Wisconsin's 2016 Water Quality Report to Congress and impaired waters list\*. Section 303(d) of the United States Clean Water Act requires each state, territory and authorized tribe to develop a list of impaired waters. These are waters for which technology-based regulations and other required controls are not stringent enough to meet the water quality standards set by states. The law requires that states establish priority ranking for waters on the lists and develop Total Maximum Daily Loads (TMDLs) for these waters. A TMDL includes a calculation of the maximum amount of a pollutant that can be present in a waterbody and still meet water quality standards.

\* Concerning this map are comments regarding Lac Courte Oreilles in regard to its absence from the water quality report and list. Public Comments to Impaired Waters List <http://dnr.wi.gov/topic/surfacewater/ir2016.html> include comments from Courte Oreilles Lakes Association (COLA). COLA rejects the determination that Musky Bay is a separate body of water from the rest of Lac Courte Oreilles. COLA also cites five years of dissolved oxygen data suggesting that Lac Courte Oreilles is impaired.

Tax parcels from the Sawyer County Land Records Department, acquired June 2016. Agricultural Tax Parcels selected by tax assessment attributes indicating agricultural land use. Agricultural land uses on parcels with tax exempt status are not included.

Map crafted by Kyle McNair, edited by Douglas Miskowiak. Version 12-09-2016.

## Impaired Waters

- Impaired Water
- Proposed Impaired Water
- Surface Waters
- Streams & Flow Direction
- Cranberry Growers
- Agricultural Tax Parcel
- Watershed Boundary
- County Boundary
- Lac Courte Oreilles Reservation
- Minor Civil Divisions
- A County Roads
- 70 State Roads

## Project Education and Assistance



## Project Cooperators

