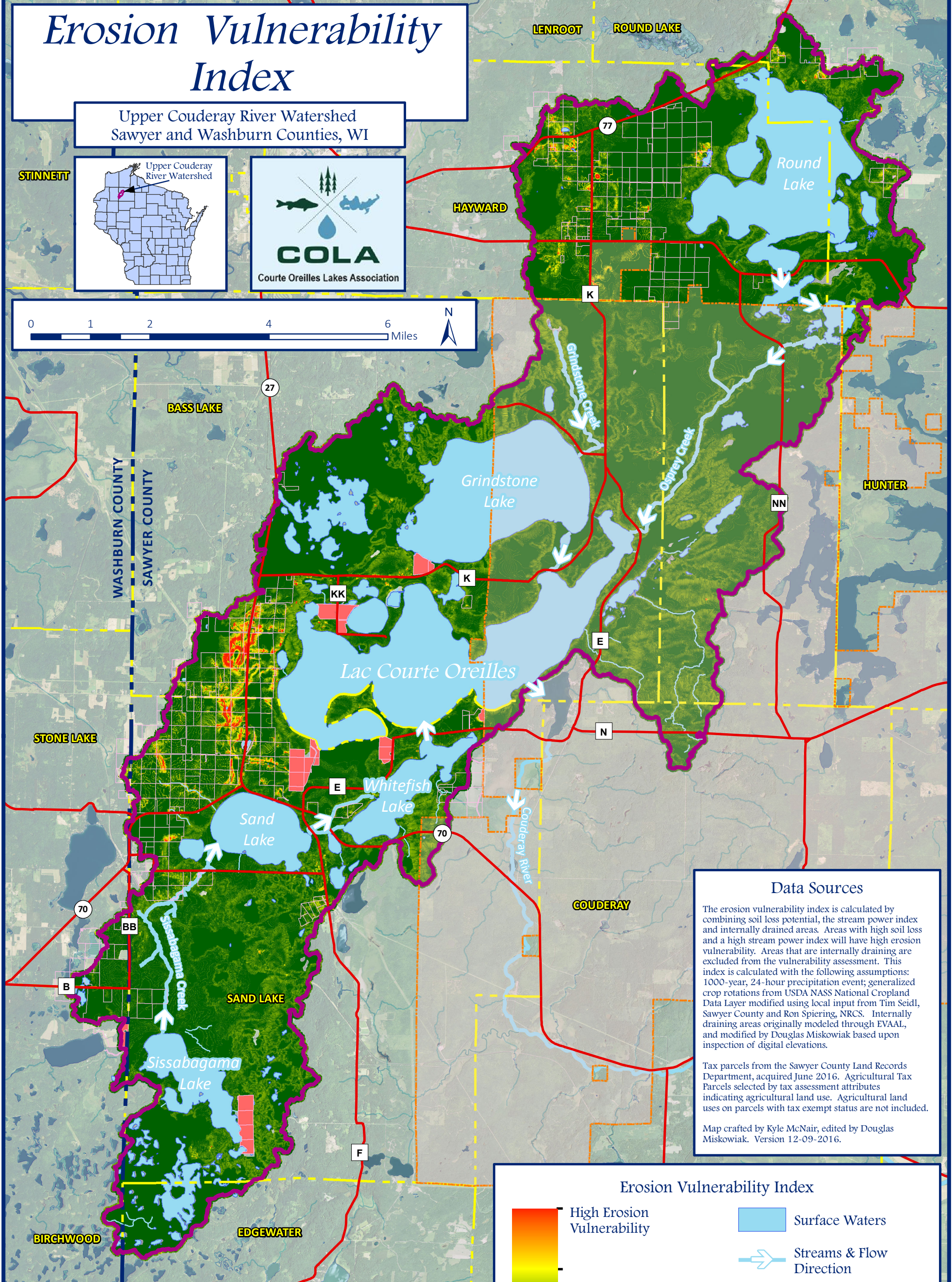
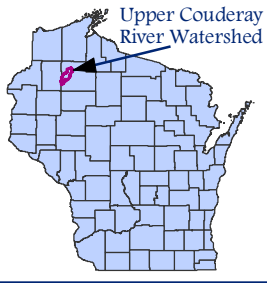


Erosion Vulnerability Index

Upper Couderay River Watershed
Sawyer and Washburn Counties, WI

STINETT



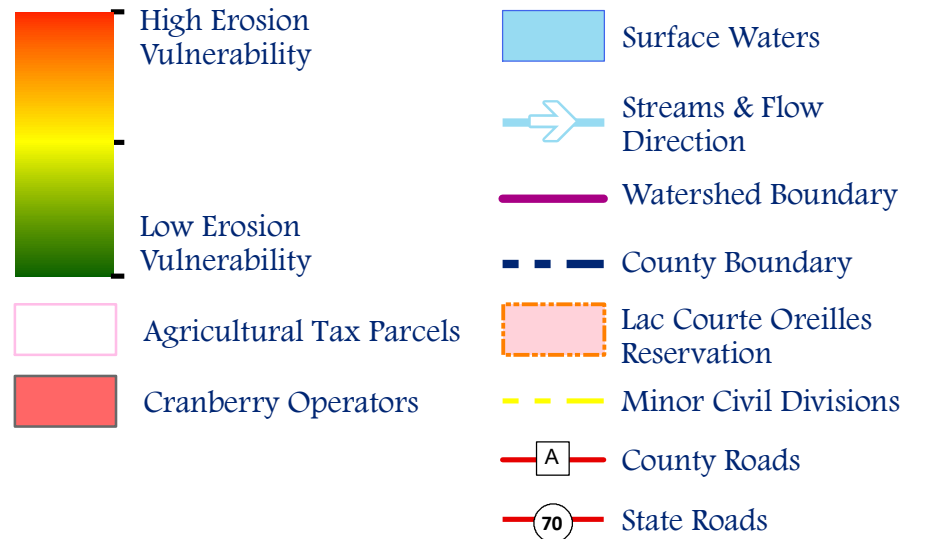
Data Sources

The erosion vulnerability index is calculated by combining soil loss potential, the stream power index and internally drained areas. Areas with high soil loss and a high stream power index will have high erosion vulnerability. Areas that are internally draining are excluded from the vulnerability assessment. This index is calculated with the following assumptions: 1000-year, 24-hour precipitation event; generalized crop rotations from USDA NASS National Cropland Data Layer modified using local input from Tim Seidl, Sawyer County and Ron Spiering, NRCS. Internally draining areas originally modeled through EVAAL, and modified by Douglas Miskowiak based upon inspection of digital elevations.

Tax parcels from the Sawyer County Land Records Department, acquired June 2016. Agricultural Tax Parcels selected by tax assessment attributes indicating agricultural land use. Agricultural land uses on parcels with tax exempt status are not included.

Map crafted by Kyle McNair, edited by Douglas Miskowiak. Version 12-09-2016.

Erosion Vulnerability Index



Project Education and Assistance



Project Cooperators

