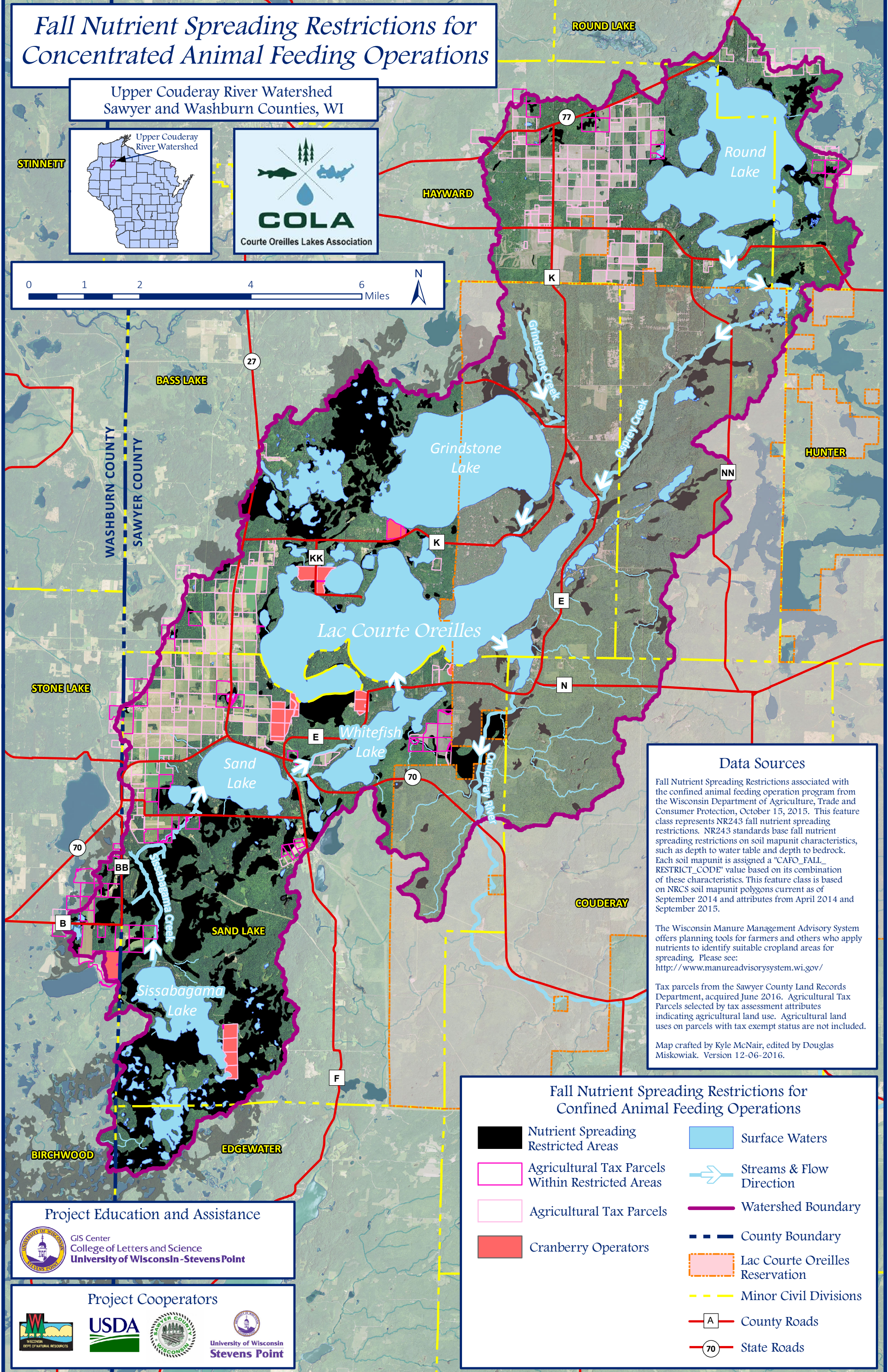
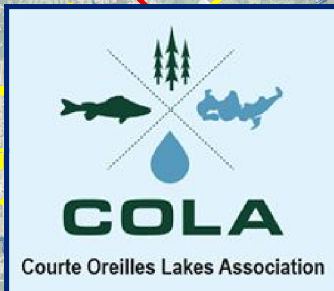
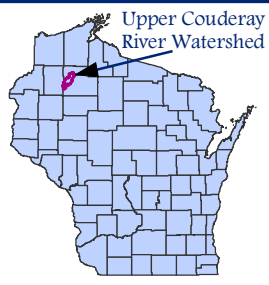


Fall Nutrient Spreading Restrictions for Concentrated Animal Feeding Operations

Upper Couderay River Watershed
Sawyer and Washburn Counties, WI

STINNETT



Data Sources

Fall Nutrient Spreading Restrictions associated with the confined animal feeding operation program from the Wisconsin Department of Agriculture, Trade and Consumer Protection, October 15, 2015. This feature class represents NR243 fall nutrient spreading restrictions. NR243 standards base fall nutrient spreading restrictions on soil mapunit characteristics, such as depth to water table and depth to bedrock. Each soil mapunit is assigned a "CAFO_FALL_RESTRICT_CODE" value based on its combination of these characteristics. This feature class is based on NRCS soil mapunit polygons current as of September 2014 and attributes from April 2014 and September 2015.

The Wisconsin Manure Management Advisory System offers planning tools for farmers and others who apply nutrients to identify suitable cropland areas for spreading. Please see: <http://www.manureadvisorysystem.wi.gov/>

Tax parcels from the Sawyer County Land Records Department, acquired June 2016. Agricultural Tax Parcels selected by tax assessment attributes indicating agricultural land use. Agricultural land uses on parcels with tax exempt status are not included.

Map crafted by Kyle McNair, edited by Douglas Miskowiak. Version 12-06-2016.

Fall Nutrient Spreading Restrictions for Confined Animal Feeding Operations

- | | | | |
|--|--|--|---------------------------------|
| | Nutrient Spreading Restricted Areas | | Surface Waters |
| | Agricultural Tax Parcels Within Restricted Areas | | Streams & Flow Direction |
| | Agricultural Tax Parcels | | Watershed Boundary |
| | Cranberry Operators | | County Boundary |
| | | | Lac Courte Oreilles Reservation |
| | | | Minor Civil Divisions |
| | | | County Roads |
| | | | State Roads |

Project Education and Assistance



Project Cooperators

