



2025 Summer Field Experience (SFE)

Treehaven and Campus Sessions

Outline

Course Overviews

Treehaven and Campus Overview

Application Requirements &
Registration Process

Teaching Assistance Positions

Financial Opportunities

Student Experience



Course Overviews

Forestry 319 - Land Surveying

Practices in land surveying, including distance and angular measurement, area computation and mapping, stadia, note keeping, and deed searching for integrated resource management.



Forestry 320 - Forest Management

Apply forest measurement techniques and ecological relationships for integrated resource management.



Soils 359 - Soil Conservation & Watershed Inventory

Field techniques of land surface relief inventory, soil percolation, watershed interpretive systems for runoff prediction, and groundwater characteristics investigation for integrated resource management.



Soils 360 - Soil Inventory Methods

Techniques in describing, mapping, classifying and interpreting soils for integrated resource management.



Water 380 - Aquatic Ecosystem Evaluation

Fishery, limnological and hydrological evaluation; lake and stream inventory and evaluation for integrated resource management.



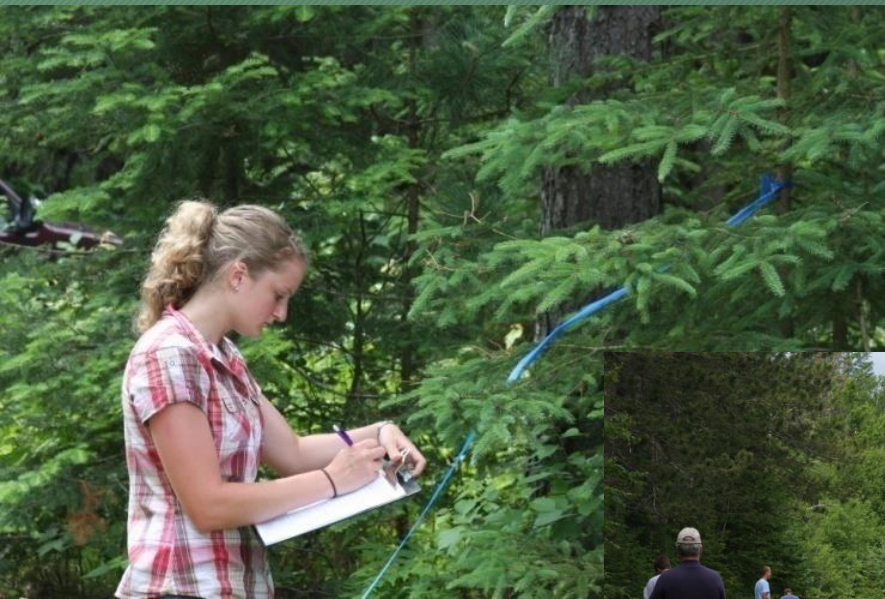
Wildlife 340 - Wildlife Management Techniques

Investigate ecological relationships and apply selected wildlife management techniques of habitat evaluation, capturing, marking, monitoring, and censusing animals for integrated resource management.



Natural Resources 405 - Plant Identification

Self-directed course that focuses on learning the common and scientific names of common plants and the role of plants in natural resources management.



Summer Program Breakdown

- **Session 1 & 2 - Treehaven** with up to 108 students each session
 - Treehaven Session 1 – May 18-June 27, 2025
 - Treehaven Session 2 – July 6-August 15, 2025
- **Session 3 – Campus*** with up to 48 students
 - Campus Session 3 – July 6-August 15, 2025
 - *Note that there is no guarantee Campus Session 3 will run every year. It is dependent on seat capacity requirements. Treehaven must be filled first for a Campus Session to be offered.
- **16-20 Students per class with 4-5 Students per crew**
 - All SFE classes are GRADED classes (not pass\fail), including the NRES 405: Plant Identification.

Summer Term

Fulltime enrollment is 6-9 credits
SFE is 7 credits

You can enroll in an additional 2-credits
of summer class **opposite** of your SFE for “free”

6-9 credits is the **same tuition rate**

Common classes: GEOG 341, BIOL 130, 374, 377, WLDL 372

- Additional summer credits over 9 credits will be billed
- Additional summer credits are optional
- Additional summer classes cannot be taken *concurrently* with the Summer Field Experience (SFE)
- Summer registration begins late March (typically)
 - You will know your SFE session ahead of time to register for summer and will have a detailed email with directions on how to register

Equipment Package

- All students will be issued an equipment package
- The package includes essential items needed for the summer field experience
- Some of the items included are, a hardhat, compass, hand lens, safety glasses, headlamp, waders, and first aid kit
- The cost of this packet is included in your course fees and handed out on the first day of your session
- Cost is approximately \$150+ for the equipment package

Waders in Equipment Package



- These waders are **safety items** not a luxury item
- They are a mandatory piece of equipment, and **you will NOT be able to use personal waders for labs or field trips**
 - Personal waders may not be sufficient in insulating against electricity while shocking
 - Personal waders may also increase the spread of Aquatic Invasive Species if used outside of class and in lab



These waders are yours to keep and other upper-level CNR classes will expect you to use them during labs so keep them in good condition as they can be useful throughout your whole college career

Wader Try-Ons (Required)

- We have a variety of sizes to try on and if you need a non-standard size, we will do our best to accommodate you
- If you are unable to make one of the following times, please let **Tim Sattler** (715-346-4664 or CNR.Stockroom@uwsp.edu) know
- If you choose not to attend a session, you will receive the waders indicated by your shoe size on your SFE application, the waders you try on might not be the exact make/model you receive

Wader Try-Ons

- Tuesday, October 22nd 1-2pm in TNR 120
- Wednesday, October 23rd 4-6pm in TNR 157
- Thursday, October 24th 5-6pm in TNR 157

Treehaven Overview



Session 1: May 18 – June 27, 2025

(Report to Treehaven between 1:30 – 4:00 p.m. - tentative)

Session 2: July 6 – August 15, 2025

(Report to Treehaven between 1:30 – 4:00 p.m. - tentative)

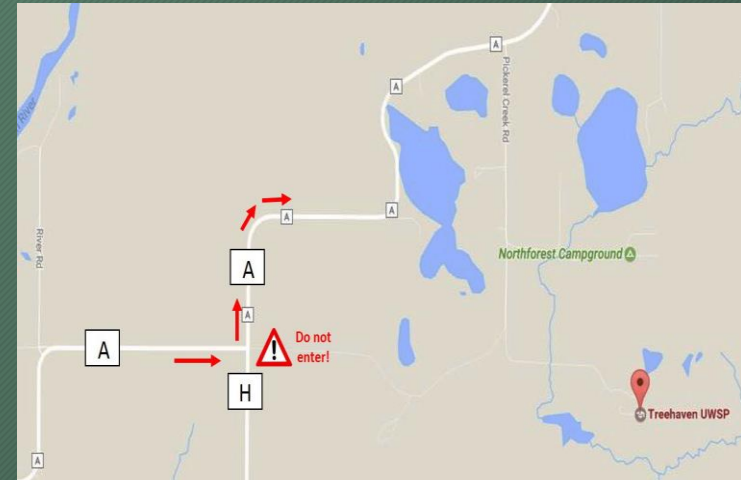
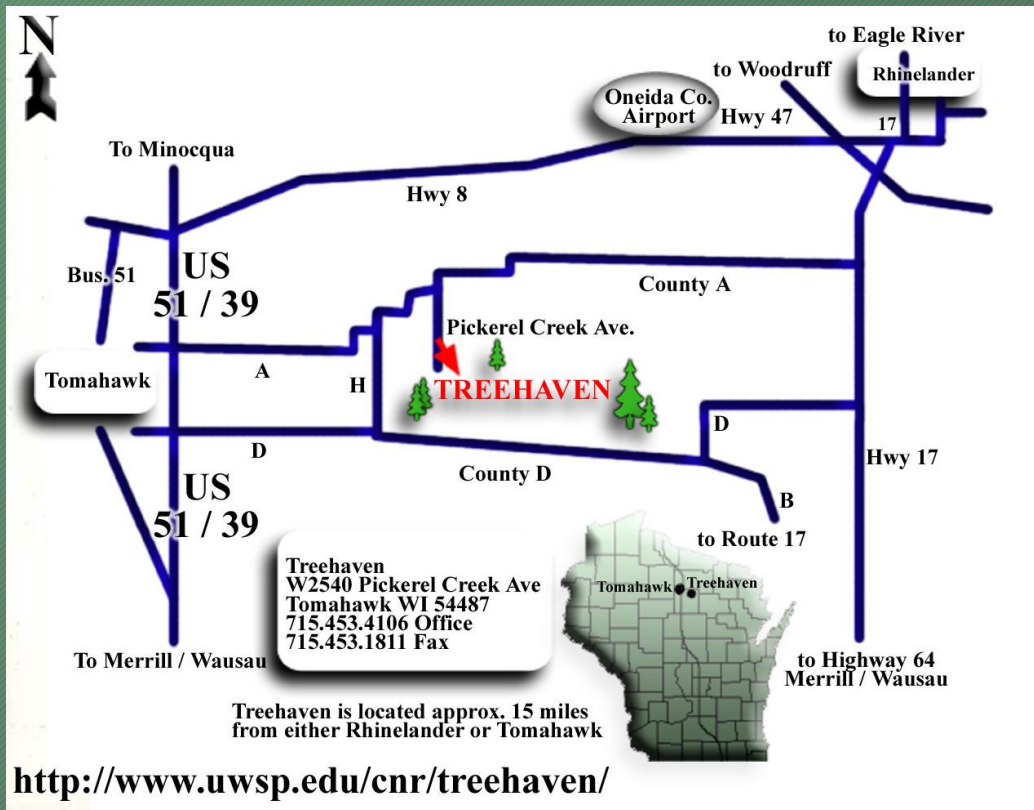
[Treehaven Summer Field Experience Video](#)

Treehaven

1400 Acre Residential Facility Near Tomahawk



Located East of Tomahawk, WI



<http://www.uwsp.edu/cnr-ap/treehaven/Pages/default.aspx>

Vallier Classroom and Irvin L. Young Living Center



- Auditorium, Classrooms, Dining Area and Bear Track Lounge



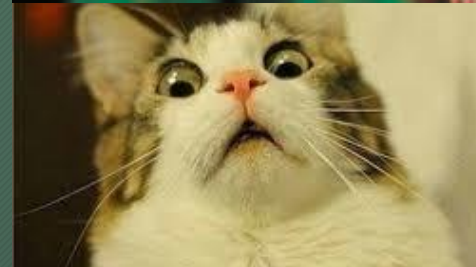
Housing at Treehaven - Ed Okray

Aspen and Birch Living Centers



- Dorm-style living with bunk beds and a private bathroom
- 3-4 people per room

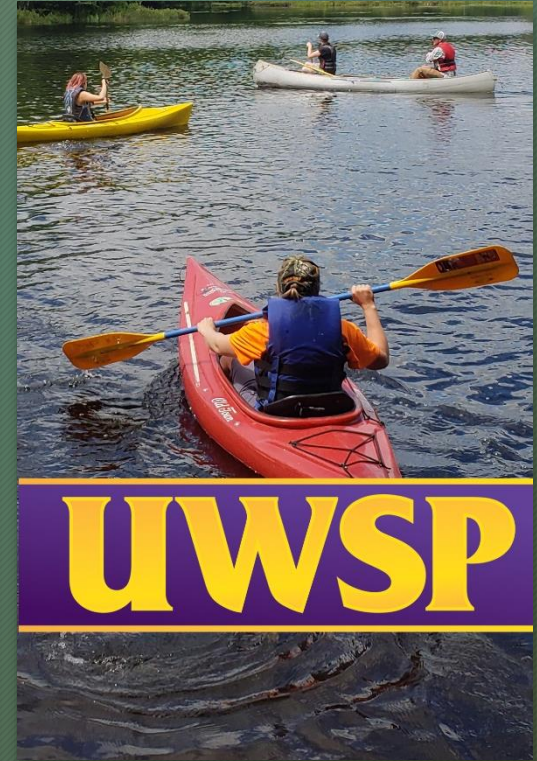




Meals at Treehaven – Winterberry Dining Room

- A panoramic view of the scenic Harrison Hills
- Stone wood-burning fireplace offering cozy dining
- Menu choices can include vegetarian, vegan, gluten-free, and other dietary restrictions – please let us know on the application form
- Monday-Friday meals include a full breakfast, lunch, dinner (with salad bar)
- Weekends – Snack Shack in Bear Track Lounge – Pizza/Sandwiches and other items





GREAT Recreational Activities

Canoeing, Kayaking, Softball, Volleyball, Ultimate Frisbee, Fishing, and More!



...and the grounds are great for jogging, hiking and relaxing.

Campus Session



Session 3: July 6 – August 15, 2025

(Report to TNR 170 between 5:30 – 6:00 p.m. Sunday, July 6 - tentative)

Located directly on campus and utilizes classrooms, Schmeeckle Reserve, and other local properties for learning environments

Campus Session Housing & Meals

- Campus Housing is optional if you need it
 - 2024 was Neale Hall-Campus Housing, but could change for 2025
 - Housing (and Meals) Costs are NOT Included in SFE Total for campus session
 - You will need to contact UWSP Housing and Residence Life to set up your housing
- Meals are on your own, you may be in the field all day, so please pack accordingly (lots of water, a lunch, and snacks)



Neale Hall - double room occupancy, desks, full kitchens on each floor, study lounge and computer lab



Recreational Opportunities

Hiking, hammocking,
kayaking, fishing,
exploring Stevens Point





Application Requirements and Registration Process

Academic Eligibility

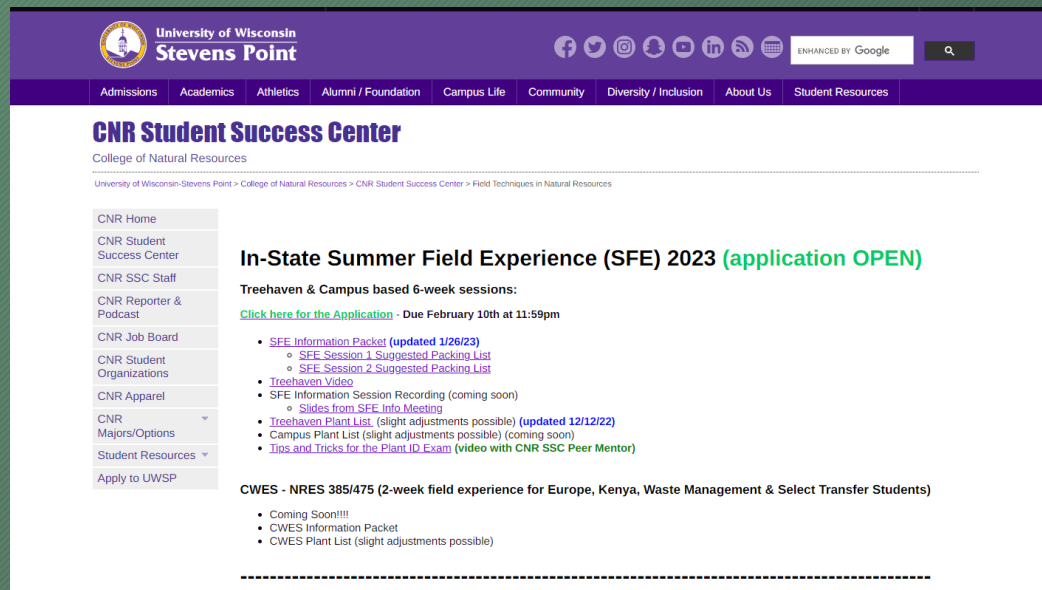
- **2.00+ GPA** In-Major
- Complete **NRES 250, NRES 251, and Math 107** (or math placement above Math 107) by the end of this spring semester before the start of SFE
- Priority given to students who also have NRES 150 and NRES 151 completed

Below 2.00 GPA in Major?

- You should still apply even if your In-Major GPA is below 2.00
- You will be put on a wait list for the second half of summer sessions
- You could be added to Session 2 or 3 in early June *if* your GPA in major improves to 2.00 or higher *and if* there are still open seats

Applications and Informational Packets

Available on the CNR SCC website below and the *CNR Reporter*.



The screenshot shows the University of Wisconsin Stevens Point website. The header includes the university logo, name, and navigation menu. The main content area is titled "CNR Student Success Center" and features a sidebar with navigation links. The main content highlights the "In-State Summer Field Experience (SFE) 2023 (application OPEN)" with a list of informational packets and links for application.

University of Wisconsin Stevens Point

Admissions | Academics | Athletics | Alumni / Foundation | Campus Life | Community | Diversity / Inclusion | About Us | Student Resources

CNR Student Success Center

College of Natural Resources

University of Wisconsin-Stevens Point > College of Natural Resources > CNR Student Success Center > Field Techniques in Natural Resources

- CNR Home
- CNR Student Success Center
- CNR SSC Staff
- CNR Reporter & Podcast
- CNR Job Board
- CNR Student Organizations
- CNR Apparel
- CNR Majors/Options
- Student Resources
- Apply to UWSP

In-State Summer Field Experience (SFE) 2023 (application OPEN)

Treehaven & Campus based 6-week sessions:

[Click here for the Application](#) - Due February 10th at 11:59pm

- [SFE Information Packet \(updated 1/26/23\)](#)
 - [SFE Session 1 Suggested Packing List](#)
 - [SFE Session 2 Suggested Packing List](#)
- [Treehaven Video](#)
- SFE Information Session Recording (coming soon)
 - [Slides from SFE Info Meeting](#)
- [Treehaven Plant List](#) (slight adjustments possible) (updated 12/12/22)
- Campus Plant List (slight adjustments possible) (coming soon)
- [Tips and Tricks for the Plant ID Exam](#) (video with CNR SSC Peer Mentor)

CWES - NRES 385/475 (2-week field experience for Europe, Kenya, Waste Management & Select Transfer Students)

- Coming Soon!!!!
- CWES Information Packet
- CWES Plant List (slight adjustments possible)

www.uwsp.edu/cnr/ssc/Pages/treehavenInfo.aspx

Application Deadline!

- Application Opens – November 1st
- Application Closes – December 1st
11:59pm

NO LATE APPLICATIONS!

CNR Summer Field Experience - Application Due December 1

This application is for the Summer 2025 Summer Field Experience (SFE) at Treehaven or on Campus. By submitting this application to attend SFE you are acknowledging that you will complete all course requirements and field activities. By applying to SFE using this form, you allow the CNR to collect your GPA and coursework data from UW-Stevens Point.

To be eligible for SFE, you need to have completed Math 107 (or have tested out of Math 107), NRES 250, NRES 251, and have a 2.00 GPA (or above) BEFORE the start of your Summer Field Experience session.

- **If your GPA is below 2.00,** you can still apply; improvements in spring may allow for placement in the second half of summer.
- **Waste Management majors AND students attending the European Environmental Studies or Kenya Permaculture Seminars** should not fill out this application; you will receive separate forms.

Applications need to be submitted by December 1 by 11:59pm. Please direct any questions or concerns to cnsfe@uwsp.edu. Please reference the Summer Field Experience website for more details, <https://www3.uwsp.edu/cnr/ssc/Pages/treehavenInfo.aspx>

SFE Placement Criteria

- All CNR major students with an in-major GPA of 2.00+ that have NRES 250, NRES 251, and Math 107 completed before summer will be considered for SFE
- Qualifying students will be ranked by total credits completed, higher credit students will be given priority if there is a surplus of students who applied vs seats available

Session Preference

- Although we will work with as many session preferences as possible, the ONLY way to get a guaranteed session is by showing proof of **military obligations** or having a **Natural Resources related summer job** and having your employer email cnrsfe@uwsp.edu no later than **December 1st by 11:59pm**
 - Your employer must include your name, what your position is, dates you will be working, and SFE session you need to attend to be able to complete your summer internship (ex. Stevie Pointer is hired as a NRCS Intern from June 1-July1 and will need to attend Treehaven Session 2)
- Campus Session 3 seats will be prioritized for students who are non-traditional, have family obligations, are primary caregivers, or have major medical concerns
 - Lease obligations or pet care needed near Stevens Point are NOT considered valid reasons for placement into Session 3

Session Preference

- Please be flexible and understanding with the SFE session you are placed into
 - There are around 260 seats and often many students want the same session
 - Plan your family vacations, trips, summer activities around the SFE session you are accepted into
- We cannot accommodate every preferred session
- Only military obligations and natural resources summer jobs are guarantees for sessions with confirmation from employers by December 1st
 - Employer emails received after December 1st will not be accepted as SFE session lists will already be determined, each session will be full and likely unable to switch sessions

Notification of Acceptance

- Session lists will be emailed out by December 10th (tentative date)
- You will receive electronic permissions to register for the Z one-credit classes before the March registration opens
 - This does not register you for these classes but gives you permission/authorization to register for them yourselves

Registration

- In March you will get a detailed email with directions on how you can register for the 7 courses of SFE
- Summer Registration begins mid-March (official dates announced in spring semester)
- If you are not registered by end of March, you may be dropped from the program and your spot may be given to the next student on the waiting list, so don't delay in registering and following directions in the emails that will be sent

Change of Plans?

- If you wish to remove your name from the waiting list or drop the summer field experience courses email cnrsfe@uwsp.edu
- Always include your Name, ID number, and which session you were admitted or waitlisted for
- Please note that if you delay SFE, you may not be able to register for specific upper-level courses and ultimately delay your graduation
- Complete SFE as soon as possible to stay on track with your course sequencing

SFE Website

- All SFE information is there, including an information packet, TA applications, plant lists, and more

<https://www3.uwsp.edu/cnr/ssc/Pages/treehavenInfo.aspx>

- Also, read the new and improved CNR Reporter for weekly updates, it's emailed to you every Monday

<https://www3.uwsp.edu/cnr/ssc/Pages/CNR%20Reporter.aspx>

- Direct any questions to cnrsfe@uwsp.edu

Teaching Assistants

- **Up to 18 Course Teaching Assistant's** (6-week TA's) will be hired to assist the faculty members
- Course TA's can **attend one** of the sessions and **assist at the other one**
- **These are awesome experiences and look good on a resume**
- \$12/hour, direct experience, faculty references, food and lodging paid for

CWES 2-Week TA



- Two TAs are also needed at the 2-week CWES program (May 19 – May 30) for Waste majors and students attending the International SFE options
- To apply, fill out the TA application and check the appropriate box



Plant TAs



- 12-week Plant TA – works at Treehaven for the whole summer. Must have previously completed the SFE
- 6-week Plant TA – attend Treehaven Session 1 and work as a Plant TA for the Campus Session 3



Information Packets & Plant List

SFE information packets available on the CNR SFE webpage.

Study plants early! Lists available now! You must pass the plant ID exam and could be asked to identify up to 200 plants using common and scientific name.

Plant ID Practice

- The CNR Student Success Center will host multiple events in spring semester to help with Plant ID preparation, suggestions to be successful at the exam, and plant walks
- Watch the CNR Reporter for events

Financial Opportunities

- Financial Aid
- Scholarships — CNR gives out \$380,000+ of scholarships every year, so make sure to fill out the scholarship application that is open from November 1-December 1, some of these scholarships are specifically for SFE
- Grants
- Work Study
- Other Work Opportunities
 - Stockroom, custodial, groups crew, TAs (TA application opens Nov. 1st)
- Check out the Financial Aid and Veteran Services Website for financial opportunities: <https://www3.uwsp.edu/finaid/Pages/default.aspx>

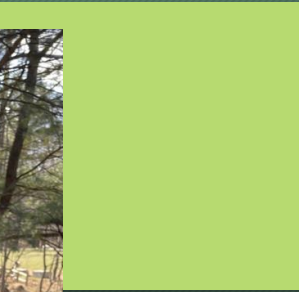
Student Experience



Dana - Treehaven 2023

- SFE Wildlife TA (session 1)
- SFE student (session 2)
- Bird Banding Technician





Jack - SFE Treehaven 2022



Jack - Treehaven TA 2023 and 2024



QUESTIONS?

ENJOY YOUR TIME AT THE
FIELD EXPERIENCE!

