



# 2024 Summer Field Experience in Natural Resources (SFE)

# Outline

Academic Programs

Treehaven and Campus Overview

Application and Registration

Academic Requirements &  
Selection

Student Experience and Safety

Financial Opportunities



# Academic Programs



# Summer Program Breakdown

- Two sessions at Treehaven in Tomahawk, WI
  - Session 1 (May 19-June 28) and Session 2 (July 7-Aug. 16)
- 108 Students per session maximum
- 16-20 Students per class/4-5 per crew
- All SFE classes are GRADED (not pass\fail), including Plant ID.
- Campus Session
  - 6 weeks – concurrent with Session 2
  - 48 students – 16 per class – 4 per crew

# Forestry 319 - Land Surveying

Practices in land measurement, including distance and angular measurement, area/rate calculations and mapping with emphasis on GIS and field computer use.





# Forestry 320 - Forest Management

Measurement of individual trees and stand level data collection to be used for sound forest management decisions. Students will also learn how to use various forestry and spatial analysis tools.





# Soils 359 - Soil Conservation & Watershed Inventory

Students will learn to follow water as it moves through a watershed and examine the physical, biological, and chemical interactions that change the quality and quantity of water. Human land alterations, implications and best management practices are also assessed.





# Soils 360 - Soil Inventory Methods

Students will develop their abilities to use and apply soil inventory information to various disciplines by inventorying soils and determining soil suitability and limitations for various uses.





# Water 380 - Aquatic Ecosystem Evaluation

Students will participate in field and laboratory methods for assessing the physical, chemical, biological, and ecological characteristics of streams and lakes. Emphasis is on field measurements and sampling techniques.





# Wildlife 340 - Wildlife Management Techniques

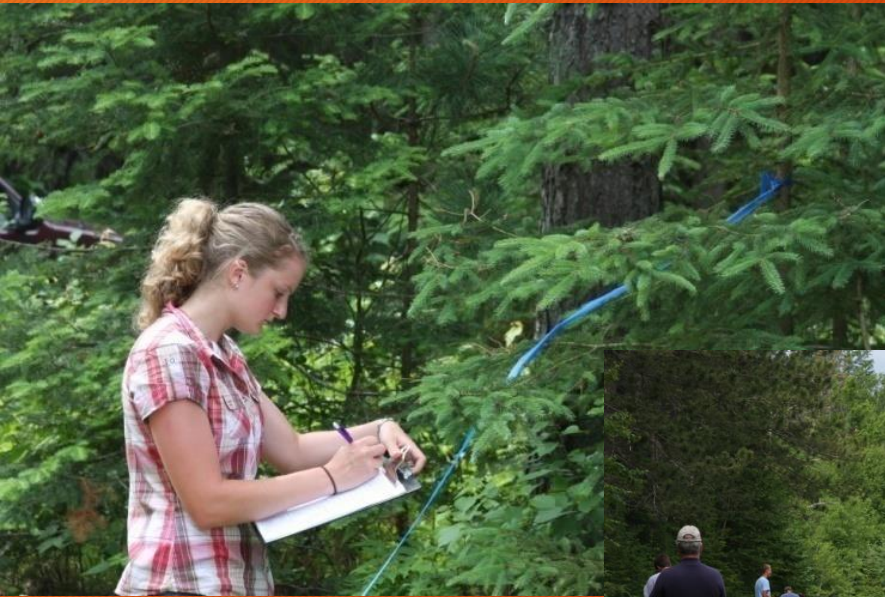
Students will learn a variety of common techniques used in the management of and research of wildlife.





# Natural Resources 405 - Plant Identification

Self-directed course that focuses on learning the common and scientific names of common plants and the role of plants in natural resources management.



# Summer Term

Fulltime enrollment is 6-9 credits  
SFE is 7 credits.

You can enroll in an additional 2-credits of summer class **opposite** of your SFE.

7-9 credits is the **same tuition rate**

Common classes: Geog 341, Bio 377, Phil 380, WLDL 372

- Additional summer credits over 9 credits will be billed.
- Additional summer credits are optional.
- Additional summer classes cannot be taken concurrently with the *Summer Field Experience (SFE)*.
- Summer registration begins March 25<sup>th</sup>
  - You will know your session ahead of time to register



# Equipment Package

- All students will be issued an equipment package.
- The package includes essential items needed for the summer field experience.
- Some of the items included are, a hardhat, compass, hand lens, safety glasses, headlamp, waders, and first aid kit.
- The cost of this packet is included in your course fees and handed out on the first day of your session. Cost is approximately \$150 for the equipment package.

# Waders in Equipment Package



- Shoe size will be asked on SFE application, this is how waders are sized.
- We put out a purchasing bid to buy in bulk and lower the cost for you. This year the cost will be approx. \$67/pair.
- These waders are **safety items** not a luxury item.
- These will be a mandatory piece of equipment. You will not be able to use personal waders for labs or field trips.
- Personal waders may not be sufficient in insulating against electricity while shocking.
- Personal waders may also increase the spread of Aquatic Invasive Species if used outside of class and in lab.



Waders, as well as other equipment pack items are used in other on campus CNR classes during labs, please keep them, they can be useful throughout your college career.



# SFE Wader Try-Ons (Required)

- We have a variety of sizes to try on. If you need a non-standard size, we will do our best to accommodate you.
  - If you are unable to make one of the following times, please let Tim Sattler (715-346-4664 or [CNR.Stockroom@uwsp.edu](mailto:CNR.Stockroom@uwsp.edu)) know.
  - If you choose not to attend a session, you will receive the waders indicated by your shoe size on your SFE application. The waders you try on might not be the exact make/model you receive.
- The following try-on times will be held in TNR Room 157**
- **Friday December 8<sup>th</sup> ; 12-2 PM**
  - **Wednesday February 7<sup>th</sup>; 3-5 PM**
  - **Thursday February 8<sup>th</sup>; 10 AM – 12 PM**
  - **Tuesday February 13<sup>th</sup>; 9-11 AM**

# Treehaven Overview

**Session 1:** May 19 – June 28, 2024

(Report to Treehaven between 1:30 – 4:00 p.m. - tentative)

**Session 2:** July 7 – August 16, 2024

(Report to Treehaven between 1:30 – 4:00 p.m. - tentative)

[Treehaven summer field experience video](#)

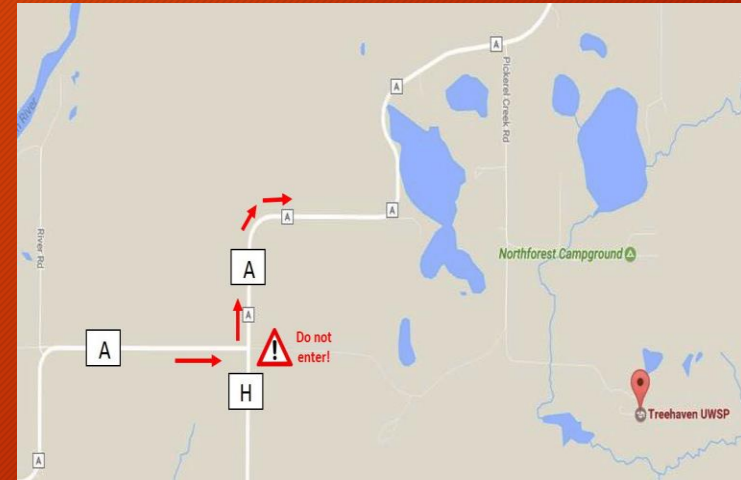
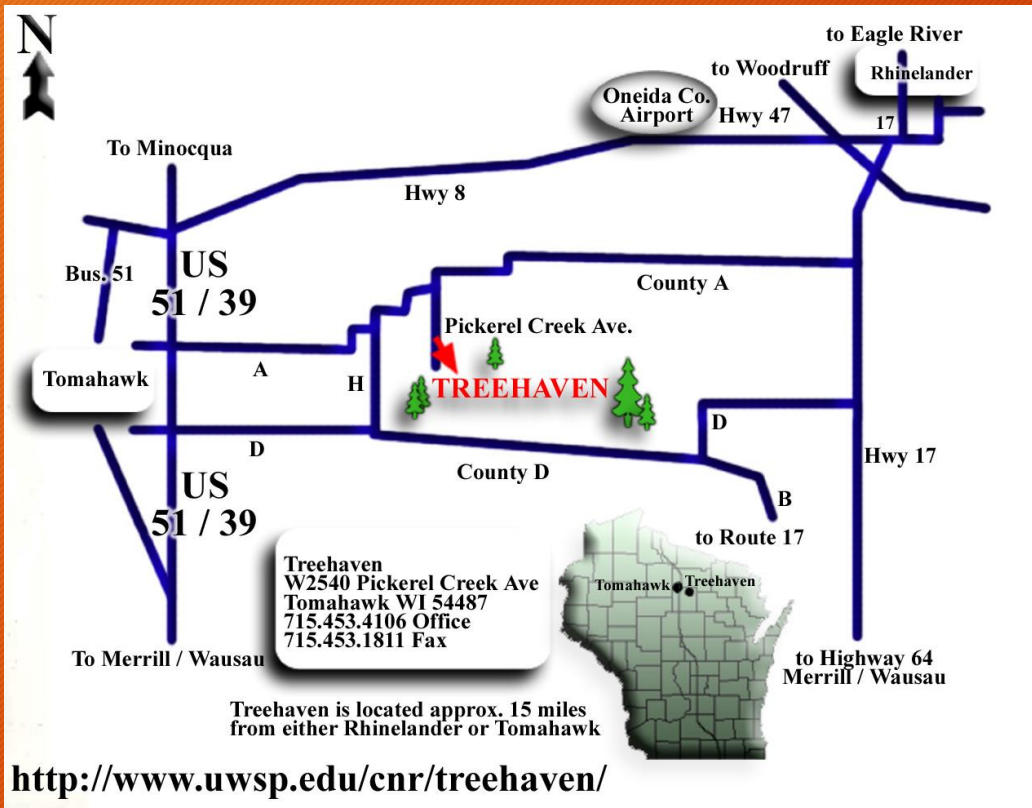


# Treehaven

1400 Acre Residential Facility Near Tomahawk



# Located East of Tomahawk, WI



<http://www.uwsp.edu/cnr-ap/treehaven/Pages/default.aspx>



# Vallier Classroom and Irvin L. Young Living Center



- Auditorium, Classrooms, Dining Area and Bear Track Lounge.



# Housing at Treehaven - Ed Okray

## Aspen and Birch Living Centers



- ❖ Dorm-style living with bunk beds and a private bathroom.
- ❖ 3-4 people per room.

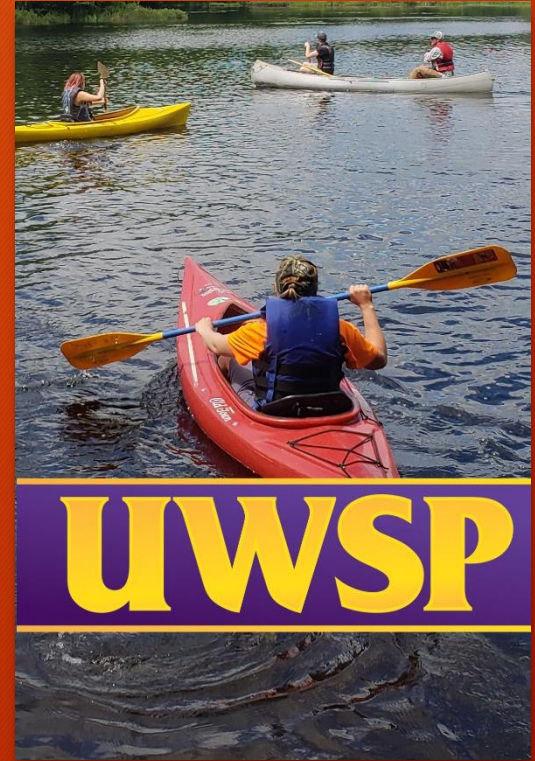




# Meals at Treehaven – Winterberry Dining Room



- Panoramic view of the scenic Harrison Hills.
- Stone wood-burning fireplace offering cozy dining.
- Menu choices can include vegetarian, vegan, gluten-free, and other dietary restrictions – please let us know on the application form.
- Monday-Friday meals include a full breakfast, lunch, dinner (with salad bar)
- Weekends – Snack Shack in Bear Track Lounge – Pizza/Sandwiches and other items.



# GREAT Recreational Activities in the Area

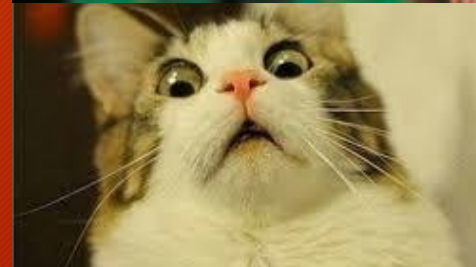
Canoeing, Kayaking, Softball, Volleyball, Ultimate Frisbee, Fishing, and More!





...and the grounds are great for jogging, hiking and relaxing.







# Campus Session



*Session 3: July 7 – August 16, 2023*  
(Report to TNR 170 between 5:30 – 6:00 p.m. Sunday, July 7 (tentative))

Located directly on campus and utilizes classrooms, Schmeckle Reserve, and other local properties for learning environments

# Campus Session Housing (if needed)

- Neale Hall On-Campus Housing\*

\*Housing (and Meals) costs are NOT included in SFE total for campus session.

Meals are on your own (please pack water, a lunch, and snacks).



Double room occupancy, desks, full kitchens on each floor, study lounge and computer lab.



# Recreational Opportunities

Swimming, hiking,  
relaxing, exploring





# Application and Registration

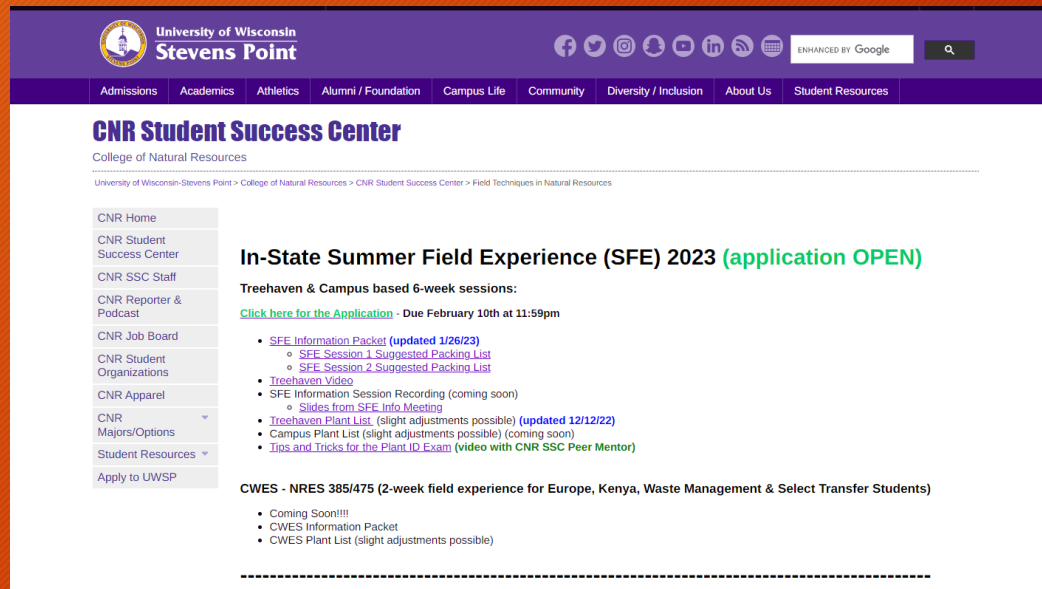


# Academic Eligibility

- 2.00 GPA in Major
- Complete **NRES 250 and 251** by the end of this spring semester.
- NRES 150 and NRES 151 completed gives priority

# Applications and Informational Packets

Available on the CNR SSC website below and the *CNR Reporter*.



The screenshot shows the University of Wisconsin Stevens Point website. The header includes the university logo, navigation links (Admissions, Academics, Athletics, Alumni / Foundation, Campus Life, Community, Diversity / Inclusion, About Us, Student Resources), and a search bar. The main content area is titled "CNR Student Success Center" and features a sidebar with navigation links. The main content highlights the "In-State Summer Field Experience (SFE) 2023 (application OPEN)" with a list of informational packets and links for application details.

University of Wisconsin Stevens Point

Admissions Academics Athletics Alumni / Foundation Campus Life Community Diversity / Inclusion About Us Student Resources

## CNR Student Success Center

College of Natural Resources

University of Wisconsin-Stevens Point > College of Natural Resources > CNR Student Success Center > Field Techniques in Natural Resources

- CNR Home
- CNR Student Success Center
- CNR SSC Staff
- CNR Reporter & Podcast
- CNR Job Board
- CNR Student Organizations
- CNR Apparel
- CNR Majors/Options
- Student Resources
- Apply to UWSP

### In-State Summer Field Experience (SFE) 2023 (application OPEN)

Treehaven & Campus based 6-week sessions:

[Click here for the Application](#) - Due February 10th at 11:59pm

- [SFE Information Packet \(updated 1/26/23\)](#)
  - [SFE Session 1 Suggested Packing List](#)
  - [SFE Session 2 Suggested Packing List](#)
- [Treehaven Video](#)
- [SFE Information Session Recording](#) (coming soon)
  - [Slides from SFE Info Meeting](#)
- [Treehaven Plant List](#) (slight adjustments possible) (updated 12/12/22)
- [Campus Plant List](#) (slight adjustments possible) (coming soon)
- [Tips and Tricks for the Plant ID Exam](#) (video with CNR SSC Peer Mentor)

### CWES - NRES 385/475 (2-week field experience for Europe, Kenya, Waste Management & Select Transfer Students)

- Coming Soon!!!!
- CWES Information Packet
- CWES Plant List (slight adjustments possible)

<https://www3.uwsp.edu/cnr/ssc/Pages/default.aspx>



# Application Deadline!

Application opens start of spring semester

Application Due  
February 10, 2024  
at 11:45 pm!

## Summer Field Experience (SFE) Application - 2024 Due Feb 10th; 11:45 pm

This application is for SFE summer 2024 at the Treehaven field station (sessions 1 and 2) and, if needed, on Campus (session 3).

There will be an information session early in the spring semester before the application closes. Information can also be found here as we have it: <https://www.uwsp.edu/cnr/ssc/Pages/treehavenInfo.aspx>.

If you do not currently have an in-major or cumulative GPA at or above a 2.0 but would like to attend SFE this summer please still fill out the application. Your GPA may improve in the spring and we will try to get you in the second half of summer.

Applications close February 10 at 11:45 pm. Students will be informed within two weeks after the application has closed as to what session they are in.

Try-on events for waders will also occur in the spring. Waders are a part of your equipment packets. Watch the CNR Reporter and emails for this.

Contact the CNR Student Success Center (TNR 122) if you have questions (ideally during Walk-ins or email the [cnrssc@uwsp.edu](mailto:cnrssc@uwsp.edu)).

**NO LATE APPLICATIONS!**

# Notification of Acceptance

- **Session lists** will be emailed out by **Friday, February 23rd** (tentative).
  - List will also be hanging in the CNR SSC (TNR 122) for carpooling purposes.
- **You will receive electronic permissions** to register for the  $\mathbb{Z}$  one-credit classes before the March registration opens.
  - This **does not register** you for these classes but gives you **permission/authorization to register for them yourselves.**



# Registration

- If you are not registered by **March 31st, 2024** you will be dropped from the program and your spot will be given to the next student on the waiting list.
  - Summer registration begins March 25<sup>th</sup>.
  - A \$25 enrollment fee is added to your tuition.



# Academic Requirements and Selection



# Session Placement Criteria

- All students with an in-major grade point average of 2.00 or higher will be considered and the four-core completed.
- Qualifying students will then be ranked by total credits completed.
- **Letter** from a relevant NR employer or military unit *may* give you preferential registration for first or second half of summer.
  - Deadline 11:45 pm on Thursday, February 22, 2024
  - Have your employer email [cnrsfe@uwsp.edu](mailto:cnrsfe@uwsp.edu) with dates of your employment.

# Below 2.0 G.P.A. in Major?

- Yes! Still apply by the deadline.
- You will then be put on a **wait list** for the second half of summer sessions.
- You will be added to Session 2 or 3 in early June **if** your GPA in major improves to 2.00 or higher **and** there are spots remaining.



# Change of Plans?

- If you wish to remove your name from the waiting list or drop the summer field experience courses...**talk to or e-mail:** Associate Dean Brenda Lackey in TNR 100 at CNRSFE@uwsp.edu.
- Always include your ID number
- **Let us know ASAP...**  
but it is highly recommended to attend by sophomore/junior summer.

# Financial Opportunities

- Financial Aid
- Scholarships
- Grants
- Work Study
- Other Work Opportunities
  - Stockroom, custodial, grounds crew, TAs (TAs full for 2024 but apply in 2025!)

Check out the Financial Aid and Veteran Services Website for financial opportunities:  
<https://www3.uwsp.edu/finaid/Pages/default.aspx>



# How to Thrive at the CNR Summer Field Experience

- Mid to Late April
- Location: TBD
- All welcome!
- Watch the CNR Reporter!
- Sponsored by WiNR  
(Women in Natural Resources)

# Plant ID with CNR SSC Peer Mentors

- Late April
- Location: TBD
- All welcome!
- Watch the CNR Reporter!
- Sponsored by the CNR SSC  
(CNR Student Success Center)



# SFE Website

- All SFE information is there, including an information packet, TA applications, plant lists, and this recorded session!
- <https://www3.uwsp.edu/cnr/ssc/Pages/treehavenInfo.aspx>
- Also, read the new and improved *CNR Reporter* for weekly updates! It comes in your email on Mondays or visit:
- <https://www3.uwsp.edu/cnr/ssc/Pages/CNR%20Reporter.aspx>

# QUESTIONS?

## ENJOY YOUR TIME AT

## SUMMER FIELD EXPERIENCE!

