

Land Cover

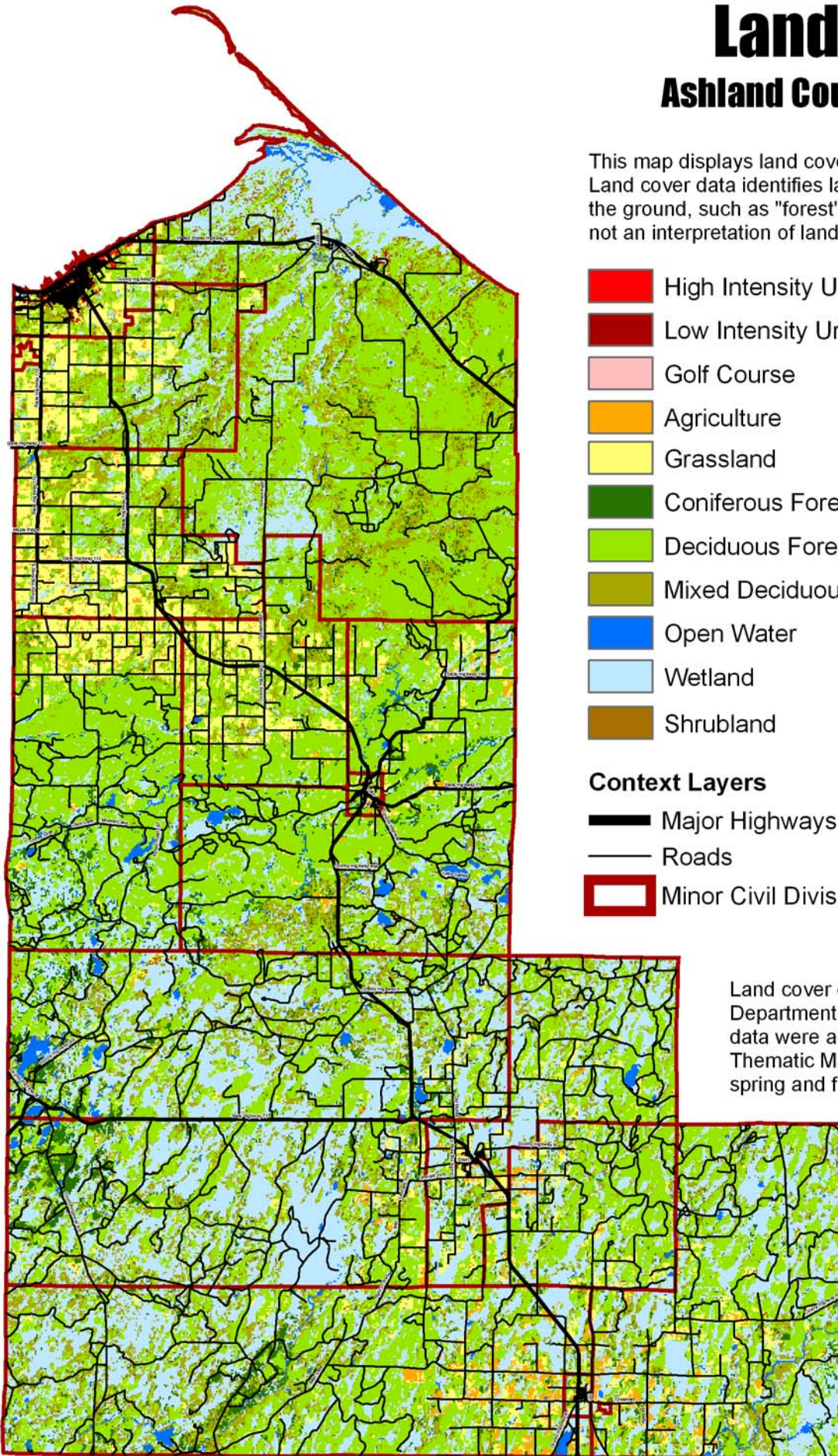
Ashland County, Wisconsin

This map displays land cover in Ashland County, Wisconsin. Land cover data identifies land features that are visible on the ground, such as "forest" or "urban". Land cover data is not an interpretation of land use, such as "park" or "residential".

-  High Intensity Urban
-  Low Intensity Urban
-  Golf Course
-  Agriculture
-  Grassland
-  Coniferous Forest
-  Deciduous Forest
-  Mixed Deciduous/Coniferous Forest
-  Open Water
-  Wetland
-  Shrubland

Context Layers

-  Major Highways
-  Roads
-  Minor Civil Divisions



Land cover data is from the Wisconsin Department of Natural Resources. Source data were acquired from the Landsat Satellite Thematic Mapper (TM) sensor, primarily in the spring and fall of 1992. The pixel size of the

source TM data is 30 meters, however, the classified data, excluding "URBAN" covers, are generalized to an area no smaller than four contiguous pixels (equivalent of approximately one acre).



0 1 2 4 6 Miles



Map created by Douglas Miskowiak,
Center for Land Use Education (CLUE).
November, 2004.