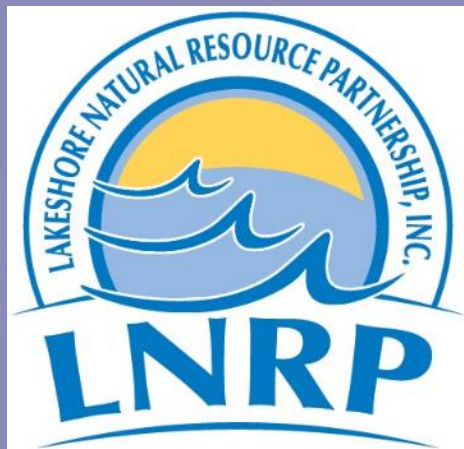


# Regional Programmatic Capacity

Kendra Kelling, Director of Projects and Programming

Lakeshore Natural Resource Partnership

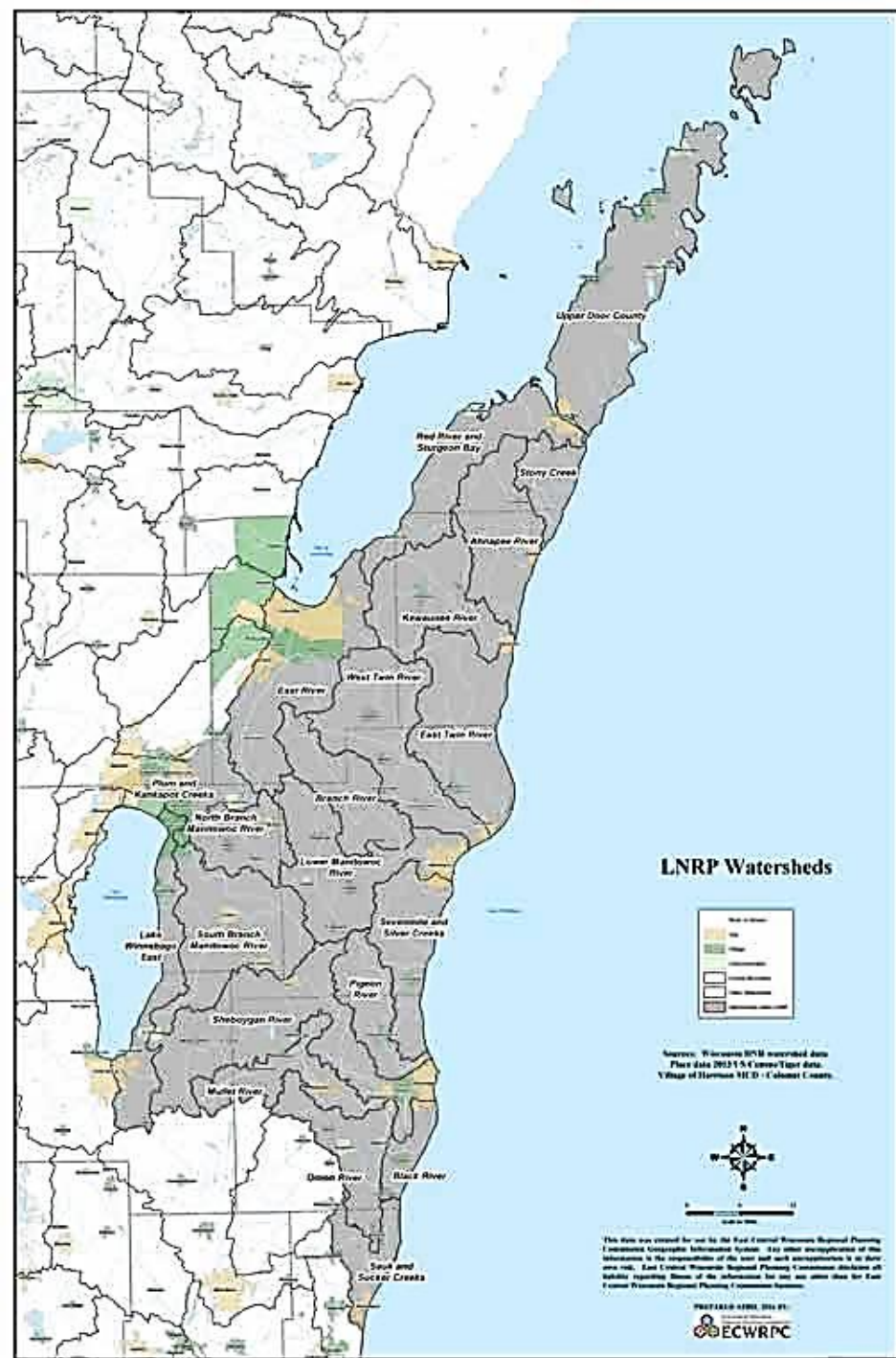
Wisconsin Lakes Partnership Convention, April 12, 2019



# **LNRP: What We're All About**



***Cultivating Community and Stewardship  
from the Ledge to the Lakeshore***



**LNRP Watersheds**



Source: Wisconsin DNR watershed data  
 Place data 2013 US Census-Tiger data  
 Village of Horicon MCD - Colman County



This data was created for use by the East Central Wisconsin Regional Planning Commission Geographic Information System. Any other interpretation of the information is the responsibility of the user and such interpretation is at their own risk. East Central Wisconsin Regional Planning Commission disclaims all liability regarding items of the information for any use other than for East Central Wisconsin Regional Planning Commission purposes.

# What we do - The 5-Cs

## 1. Common Ground

We bring diverse stakeholders together to build partnerships and liaisons across sectors.



LNRP Board Member, Mickey Judkins (far left) discusses GLRI funding with Senator Tammy Baldwin, at Great Lakes Days in Washington, D.C., March 2018

## 2. Competency-Based Learning

We provide opportunities to participate in meaningful watershed educational experiences.



Having some wraparound fun with the Fox Valley Herp Club at a youth event sponsored by the Friends of the Branch River



### **3. Community-Based Learning**

We provide many opportunities to learn about land and water because we believe that only through understanding and truly knowing a place can a person be inspired to protect and preserve it.

## 4. Cultivating Stewardship

We serve as an umbrella to watershed partners and regional networks so that stewardship can happen at local levels.



NERN-sponsored tour of Neda Spring near Horicon Marsh

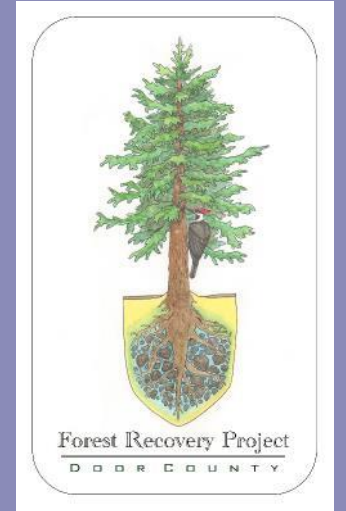
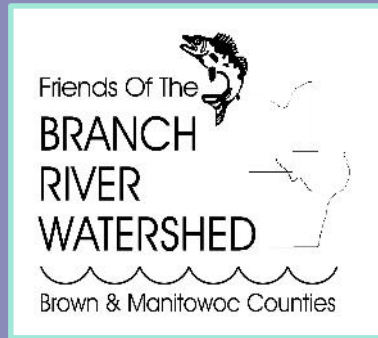
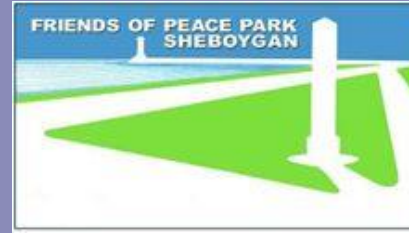
## 5. Cultivating Community

We aim to advance long-lasting, “whole systems” change across communities.



Friends of North Point meeting at Maywood Environmental Park

# LNRP Partners



# LNRP Board of Directors

## Officers

Rolf Johnson – President and liaison to the Lake Michigan Stakeholders

Chris Olson – Vice President and liaison to the Forest Recovery Project of Door County

Cathy Pabich – Secretary and liaison to the Friends of Crescent Beach

Sara Schuetze – Treasurer and liaison to the Friends of the Manitowoc River Watershed

## Directors

Tom Ward – Liaison to the Friends of the Branch River & the Lakeshore Invasive Species Management Area

Eric Fowle – Liaison to the Niagara Escarpment Resource Network

Carl Giessel – Liaison to the Climate Change Coalition of Door County

Mary Smythe – Liaison to the Climate Change Coalition of Door County

Karl Klessig – Liaison to the annual LNRP Barn Dance and Friends of Hika Bay

Susan Kennedy – Liaison to the Niagara Escarpment Resource Network

DuWayne Klessig – Liaison to the Calumet Groundwater Guardians

Mary Koczan – Liaison to the Friends of Peace Park Sheboygan



# LNRP Shared Staff Resources

## Staff

Jim Kettler, Executive Director

Kendra Kelling, Director of Projects and Programming

Jenn Hansmann, Community Relations Coordinator

Amy Fettes, Finance and Data Manager

Nicole Matson, Climate Change Coalition Coordinator

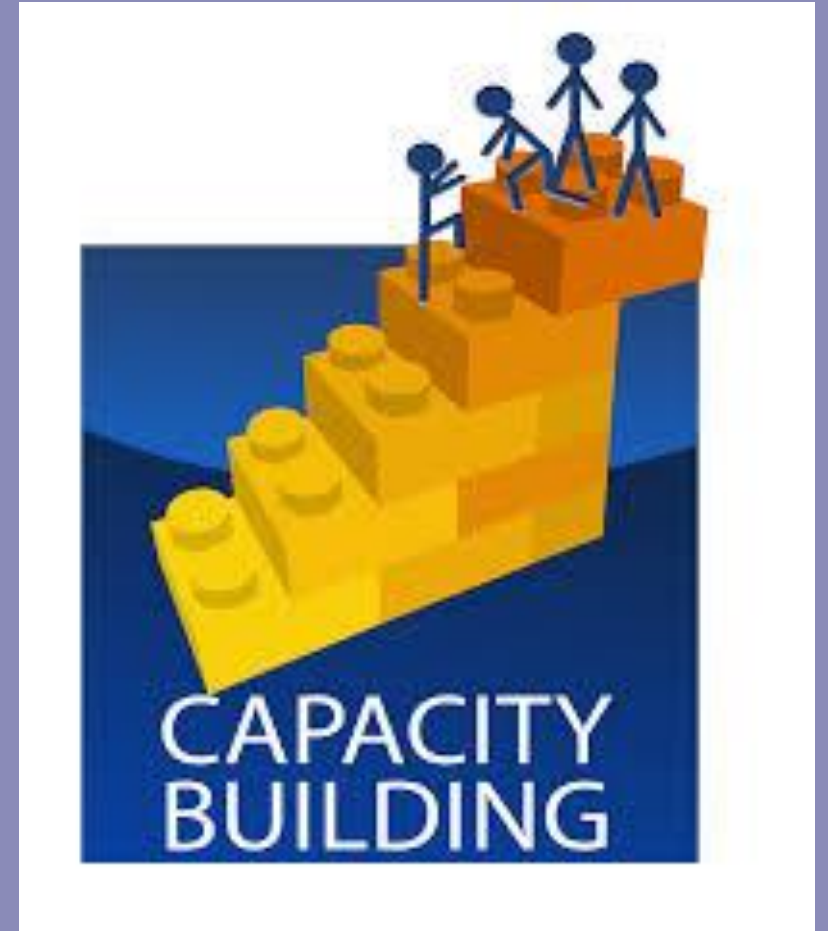
## Services

- 501c3 Umbrella for all Partners
- Fiscal Management
- Strategic Planning and Networking
- Programming
- Data and Contact Management (Water Grass based on Sales Force)
- Fundraising and Grant Writing
- Event Planning and Organizing

# Lake Organization Capacity

The Wisconsin Lakes Partnership has been developing a deeper understanding of lake organization capacity as part of a renewed effort to strengthen the ability of lake associations and lake districts to reach their goals.

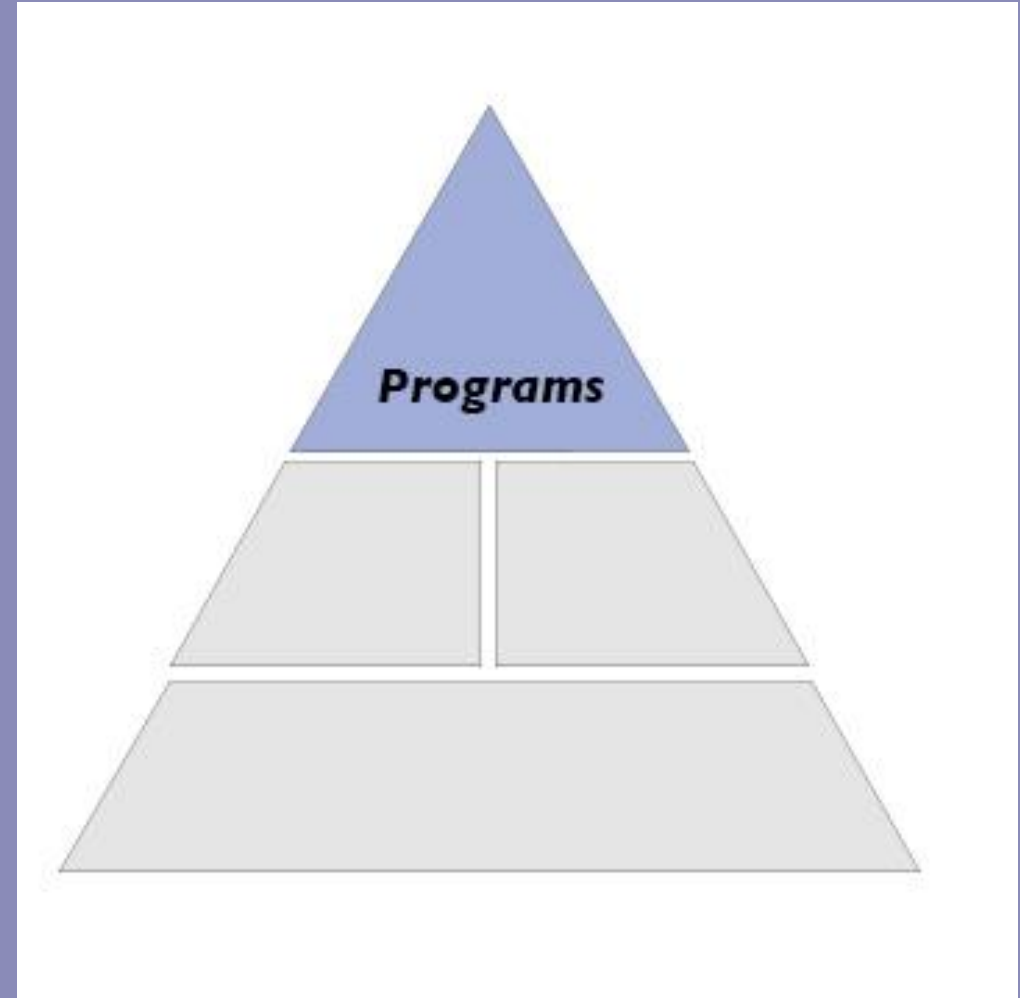
**Capacity Corner** in Lake Tides Newsletter and UW-Extension Lakes Webpage.



# Programmatic Capacity

- Where the rubber meets the road
- Boots on the ground
- Having an impact
- Getting work done
- Driving change
- Making a difference
- Dreams, vision, passion
- Funding and support

What's missing?



# The Capacity Model

I can't talk about programmatic capacity without addressing the other types of capacity.

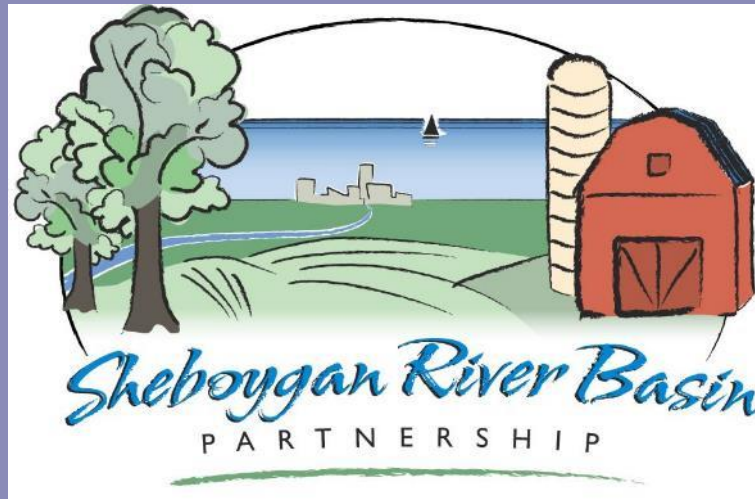
Lake groups leverage these three types of capacity to boost their ability to get things done: *programmatic capacity*.

**Programmatic success** is dependent on the other foundational components.

What does this take?



# Sheboygan River Basin Partnership: A Case Study in Capacity Building



The Sheboygan River Basin Partnership cultivates partnerships to raise public awareness, engage participation in stewardship, and promote sound decision-making regarding issues that affect the health of water resources in the Sheboygan River Basin.

# Before Partnering with LNRP

SRBP has been caring for the Sheboygan River for nearly 20 years.

The group is following its mission, working on projects and annual programs and doing fine.

*But...*

The group seems to be coasting along, not really growing, no real direction.

Nobody in the community knows about the work that we do.

Board members aren't engaged or fully informed.



# Becoming a Watershed Partner

## First Steps in Building SRBP's Organizational Capacity:

- Assessment, strategic planning, visioning
- Development of annual calendar
- Restructuring of board meetings to include project updates
- List and celebrate accomplishments
- Define board roles and expectations
- Identify opportunities for partnership
- Identify gaps and needs

# Becoming a Watershed Partner...

## Serving as a Board Liaison Leads to Growth in Relational Capacity:

- Meet and network with leaders of other like-minded organizations
- Share lessons learned
- Model partnership structures from other communities
- Learn from leadership opportunities at meetings
- Apply a big picture, regional lens
- Build credibility and reputation from collective successes
- Benefit from increased funding opportunities



# But Who has Time for all of This?!

## Shared Staffing a Key Piece in Translating this into Programmatic Capacity:

- Ability to take advantage of opportunities (relationships, funding, etc.)
- Expertise and experience
- Time to plan ahead, carry out, and *follow up*

## Programmatic Success Leads to Increased Membership and Support:

- Domino effect contributes to growth in all components of capacity

# Sheboygan River Water Trail...Good Idea, Someone Should Do That

**Sheboygan River Map**  
Sheboygan County - Planning and Conservation

**Kayak & Canoe Access Points** | Public Areas | River Distances | Additional Information

### Kayak & Canoe Access Points

**Johnsonville Fishing Area Launch** - County Rd J, Sheboygan Falls  
This launch allows for easy access to the river. This is a great spot to fish from the bank as well.  
Access Type - Carry In  
Parking - 3 Spots  
Next Takeout Area - 5.2 Miles (Dassow Park)

**Dassow Park Launch** - Hillside Rd, Plymouth, WI 53073  
This park offers fishing from the banks and a shallow bank that allows for easy drop in and take out of canoes and area. There are a few picnic tables  
Access Type - Carry In  
Parking - 5 Spots  
Next Takeout Area - 5.8 Miles (Meadowlark Trailhead)

**Meadowlark Trailhead Launch** - N5782 Meadowlark Road, Sheboygan Falls  
This launch is located at the intersection of Highway 23 and Meadowlark Road northwest of Sheboygan Falls and serves as a trailhead for the Old Plank Road Trail. There is ample parking, a water pump, picnic areas, and restrooms located on site.  
Access Type - Carry In  
Parking - 20+ Spots

**LEGEND**  
Boat Launches  
Dams  
Sheboygan River  
Public Access Areas  
Transportation  
World Transportation

POWERED BY **esri**  
Earthstar Geographics | Esri, HERE

Type here to search | 9:39 AM 3/9/2019

# The Future of the Sheboygan River

- ▶ The river has come a long way in its journey as an Area of Concern and SRBP continues to work to ensure that it is cared for well into the future
- ▶ The restoration of the Sheboygan AOC has been critical to the economic development and community revitalization that we have seen in Sheboygan, especially in Sheboygan's Riverfront, South Pier, Downtown and Lakefront Districts
- ▶ SRBP presence at River Days sharing the message of why it is so important for us to take care of the river that these animals call their home
- ▶ The health of our river and lake is essential to our health and well being and the quality of our community



# Making the River More Accessible

- ▶ At this turning point in the future of the river, one of our main projects is the creation of the Sheboygan River Water Trail
- ▶ Encourage recreational use and increase appreciation and understanding of the Sheboygan River
- ▶ Collaboration with Sheboygan County Planning and Conservation Department



# Interactive ESRI Story Map



- ▶ [Sheboygan River Water Trail Map](#)

# Physical Signage and Printed Maps

**What's been done to help the Sheboygan River heal?**

The healing process was given a boost in 2012, with more than \$83 million in tax dollars and private funding. Projects improved fish and wildlife habitat and removed more than 15,000 dump truck loads of contaminated sediment containing more than one ton of PCBs.

This tremendous effort is due to the collaboration and partnership of the U.S. Environmental Protection Agency, the Wisconsin Department of Natural Resources, the City of Sheboygan and Sheboygan County, and the cooperation of Pollution Risk Services (Cummins Products Company) and Wisconsin Public Service.

## The Sheboygan: a *healing* river

**LEGEND**

- Watershed AOCs
- Classified AOCs
- Classified AOCs
- Classified AOCs
- Classified AOCs
- Classified AOCs

The Sheboygan River is the first U.S. Great Lakes Area of Concern to undergo such a comprehensive clean-up and habitat restoration. Great Lakes Areas of Concern are severely degraded and do not support aquatic organisms (such as fish and waterfowl) that are safe for human use.

PCBs contaminated the lower 15 miles of the Sheboygan River by the 1970s. Then the Clean Water Act set the stage for laws that prohibit dumping industrial waste, and the U.S. banned PCBs.

**Special features:**

- Contaminated sediment removed
- Historic floodplain restored
- Tributary stream stabilized
- River access improved
- 92 native species planted

**Impact:**

- 8.09 acres and 3,465 feet of shoreline

**Projects made the river cleaner & deeper**

Dredges scooped or pumped out pockets of sediment contaminated with PCBs and PAHs. The sediment, some toxic, was hauled to special landfills in Wisconsin and other states.

**What are PCBs?**

PCBs are chemicals used in the U.S. from 1929-1978 to make paints and plastics. They have been linked to reproductive problems in fish and wildlife and people, and cancer in animals. They bio-accumulate in fish, wildlife and people.

**What are PAHs?**

PAHs are chemicals produced when materials burn incompletely. PAHs can cause cancer and other ailments, such as skin rashes.

### Projects improved fish & wildlife habitat

For more than a century, river habitat has been neglected and injured, resulting in Sheboygan River native fish and wildlife population declines. Projects restored, enhanced and connected wetlands and floodplain forest. This was done by:

- planting native trees, shrubs and other plants
- stabilizing eroded shorelands
- identifying, mapping and controlling invasive plants
- reclaiming historic wetlands
- installing habitat structures, such as nest boxes, boulders and logs

**What's next?**

Biologists will monitor fish and wildlife communities to assure that project goals are being met. Biologists will also continue to monitor contaminant levels in fish and wildlife to determine when the consumption advisories can be lifted.

Follow advisories to avoid or limit eating fish and waterfowl caught in the Sheboygan River and Harbor until samples show that PCB levels in the food chain have dropped.

### Everything is connected

Healing the river helps reduce health threats, improves habitat, and boosts recreation and economic vitality. By doing this, we also help to heal the Great Lakes ecosystem – the largest fresh surface water resource in the world.

# Grand Opening This Summer

- ▶ Join us for the Grand Opening of the Sheboygan River Water Trail! Watch for details to come...



# Beach Clean Ups...Year after Year

- ▶ Partnership with local neighborhood groups has taken clean up efforts to the next level
- ▶ These groups have pride in their neighborhood parks and beaches and are enthusiastic about engaging their neighbors and spreading the word far and wide into the community
- ▶ The Friends of North Point, Friends of Peace Park Sheboygan and the King Park Neighborhood Association collect garbage from three of the city's major beaches at North Point, Deland, and General King Park





# Strong Community Support

- ▶ Efforts to improve Sheboygan's parks and beaches have received strong support from the City of Sheboygan, with participation of local police officers and the Department of Public Works
- ▶ Volunteer teams from Plastics Engineering Company, local station Sheboygan's Country B93, and Centro Comunitario La Cima joined forces with the neighborhood groups for a great turnout



# Making a Difference on our Beaches

- ▶ In 2018, over 100 volunteers collected 290 pounds of garbage as a part of these events
- ▶ Thousands of cigarette butts, countless tiny pieces of plastic and foam, beverage bottles and caps, and food wrappers were among the most common items collected



# Acting Locally, Thinking Globally

- ▶ Part of a major Midwest effort organized by the Alliance of the Great Lakes across the Great Lakes Region annually
  - ▶ 15,000 Volunteers
  - ▶ 36,000 pounds of litter
- ▶ Volunteers are asked to document each item collected and this data helps researchers understand the sources and impacts of pollution and develop solutions to problems around the Great Lakes
- ▶ Part of the International Coastal Cleanup, millions cleaning shorelines worldwide



# See you at the Beach!

- ▶ Join us for our Spring Clean Up on **Saturday, May 4, 2019**
- ▶ Sign up at [www.greatlakesadopt.org](http://www.greatlakesadopt.org) or email [kendra@lnrp.org](mailto:kendra@lnrp.org)



# Where to Start?

- Complete an organizational self assessment
- Identify potential partners and/or resources
- Look to examples of organizations with high programmatic capacity, but look beyond the programmatic
- Consider applying for a WDNR Surface Water Grant
- Visit the Capacity Corner-in the Lake Tides Newsletter or the UW-Extension Lakes webpage
- Talk to someone today at the 2019 Wisconsin Lakes Partnership Convention!



“If there’s magic on this planet, it is contained in the water.”  
Loren Eiseley

