

When Zebra Mussels Came to the Northwest Counties: Lessons Learned Using Wisconsin's Invasive Species Framework

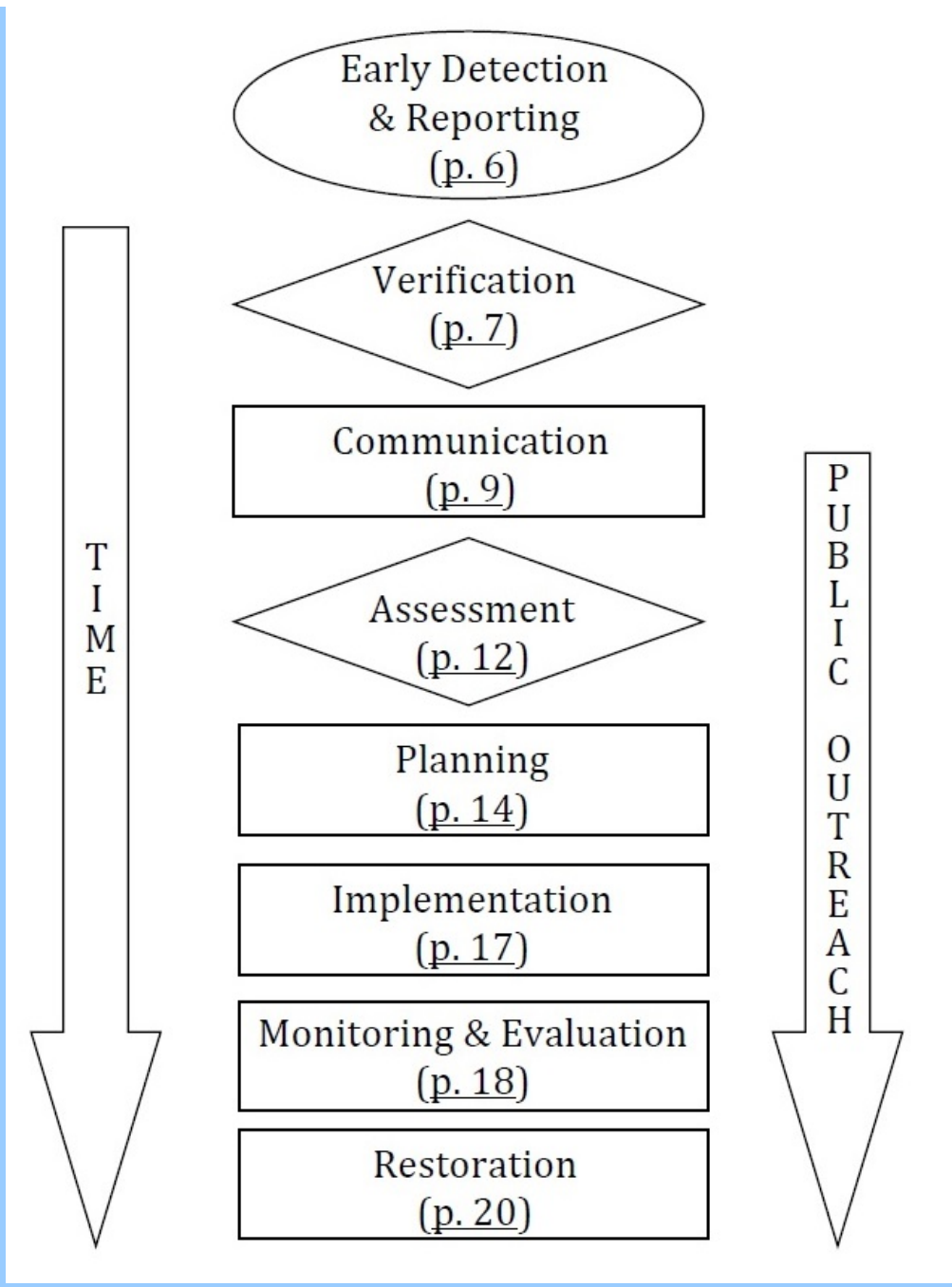


*Pamela Toshner, Lake & Watershed Protection Specialist, WI Department of Natural Resources
Cathie Erickson, Board of Directors, Washburn County Lakes and Rivers Association
Lisa Burns, Conservation Coordinator, Washburn County Land and Water Conservation Department*

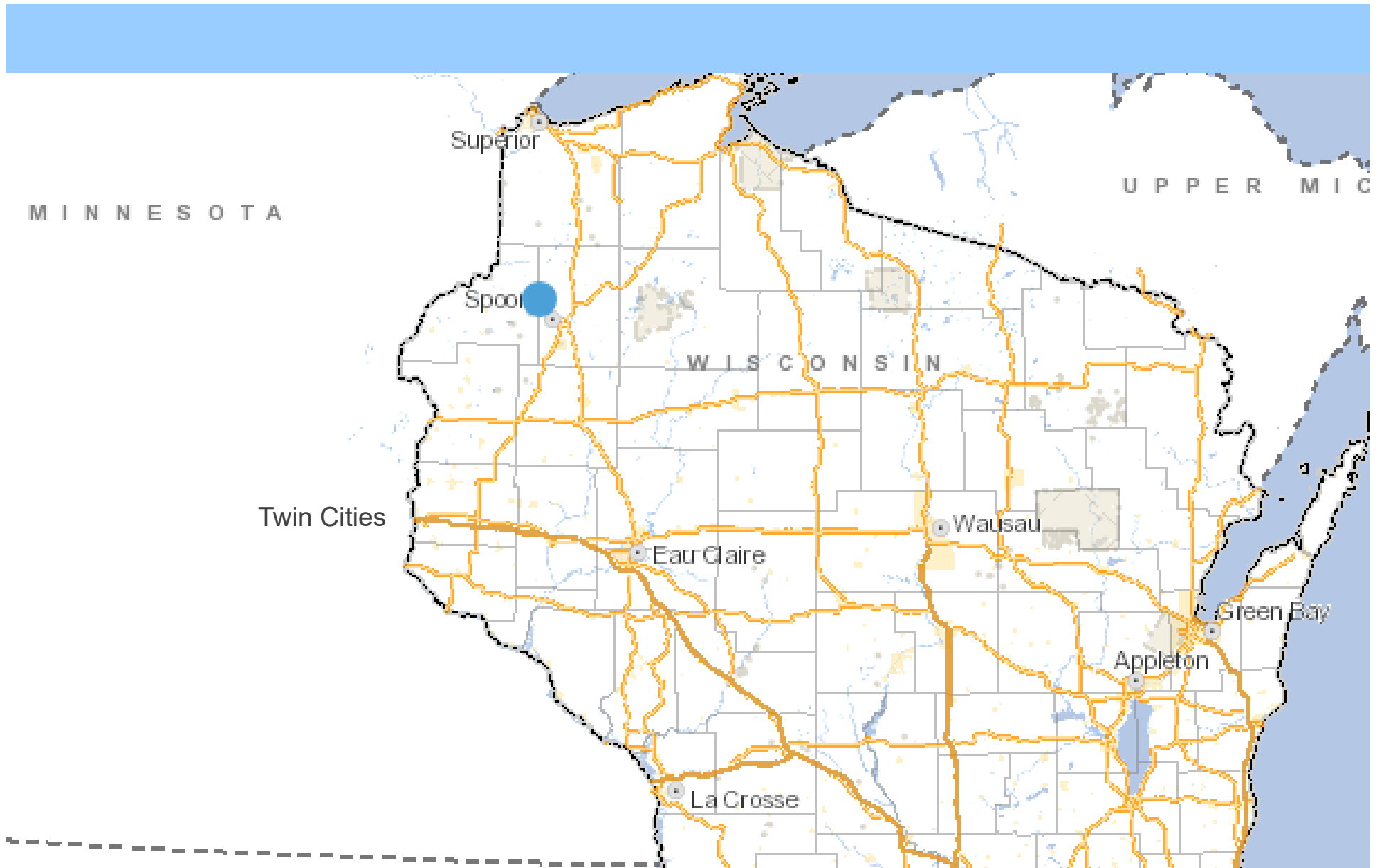
The straight scoop and lessons learned...



- **State:** early detection/reporting, verification, communication, and assessment
- **Volunteer:** citizen actions, including education, outreach and capacity building
- **County:** planning and implementation



Wisconsin's Invasive Species Framework (2017)



First reported inland zebra mussel population in a 12-county area.

EARLY DETECTION & REPORTING VERIFICATION



COMMUNICATION

The Northwest Wisconsin Zebra Mussel Management Team

includes community organization and government partners trying their best to cooperatively respond to a public concern.

The Team uses the tools at hand, including Wisconsin's Rapid Response Framework for Invasive Species, AIS grant funding, and existing laws.



Washburn County
LAKES AND RIVERS
ASSOCIATION



Burnett County
Lakes & Rivers
Association



St. Croix  River
ASSOCIATION

Contacts

Lisa Burns, Washburn County Conservation Coordinator, (715) 468-4654 and lburns@co.washburn.wi.us

Jeremy Bates, DNR Early Detection and Rapid Response Specialist, (715) 392-0807 and Jeremy.bates@wisconsin.gov

Stay tuned to
www.wclra.org more info.

No, you cannot close the boat landing.

E

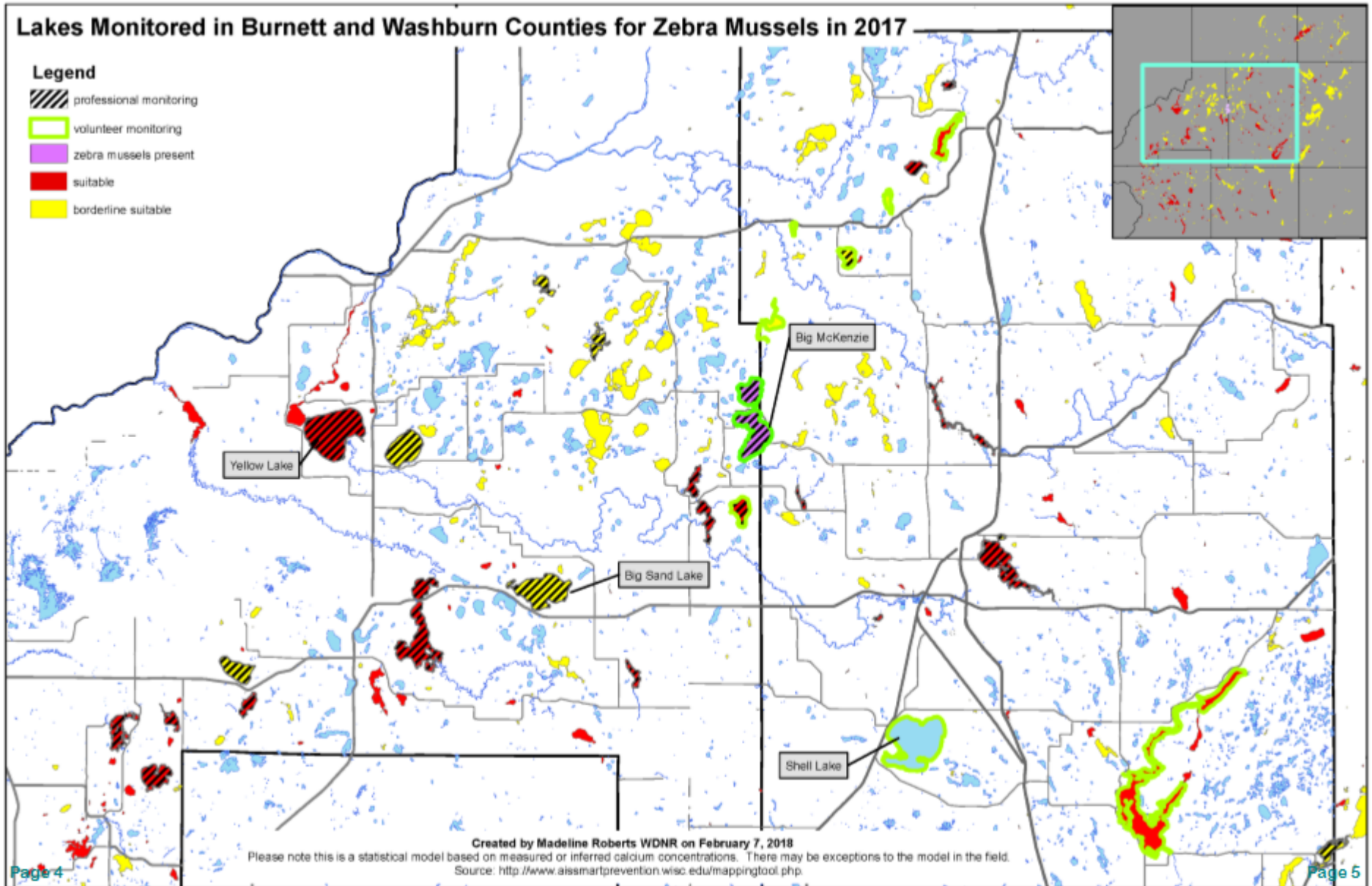


ASSESSMENT

Lakes Monitored in Burnett and Washburn Counties for Zebra Mussels in 2017

Legend

- professional monitoring
- volunteer monitoring
- zebra mussels present
- suitable
- borderline suitable



Created by Madeline Roberts WDNR on February 7, 2018

Please note this is a statistical model based on measured or inferred calcium concentrations. There may be exceptions to the model in the field.
Source: <http://www.aissmartprevention.wisc.edu/mappingtool.php>

Status of Zebra Mussels in the McKenzie Lakes Watershed HUC 12

January 10, 2018



ASSESSMENT



August 2017



Lessons Learned - State

- The state is limited in its coordination/leadership ability.
- We need publicly-available program guidance for specific response steps, questions, and actions.
 - Closing boat landings
 - Sign design and messaging
 - Control feasibility/methods
 - Decontamination methods and equipment

Citizens lead. Government follows.

CITIZEN ACTIONS

Warning!
Steep
Learning
Curve



Community Capacity Building

- What can we do?
 - Monitoring
 - Education/Outreach
 - Signs
 - Watercraft inspection
 - Advocacy

CITIZEN ACTIONS

Education/Outreach



WCLRA and BCLRA websites

Numerous newspaper articles and letters to the editor from citizens



CITIZEN ACTIONS

Education/Outreach



Signs

CITIZEN ACTIONS



CITIZEN ACTIONS

Watercraft Inspection



Advocacy

- Forming & Strengthening Lake Groups

People of the Lakes
A Guide for Wisconsin Lake Organizations

- Working with Elected Officials
 - Towns
 - State Legislators
- Ordinance Amendment

Lessons Learned - Volunteer



- Management team very effective, but could be skill-specific.
- Be ready to step up to the plate; lead by example.
- Expect differing opinions (value of cameras, funding, apathy, use of scare tactics).
- Thinking beyond single species has its place.
- Volunteers can't do it alone.

IMPLEMENTATION

County



- Local Rapid Response Plan
 - Discusses information on the activities covered today
 - Led to regional networking



IMPLEMENTATION

Lake Service Provider Outreach



|

August 22, 2017

Dear Lake Service Provider,

Zebra mussels continue to be found in Big McKenzie Lake, and one so far in Middle McKenzie. This makes boat/trailer cleaning and disinfections an even higher priority for everyone. We continue to offer assistance to you to help keep boats, trailers, and other equipment clean by providing materials for your use (disinfectant bleach and hand sprayers) and if needed, training on proper procedures. If interested, please contact your County Land and Water Conservation staff listed below to obtain the equipment.

We appreciate the extra steps that some of you are already enacting, including reserving trailers to be used only on Big McKenzie, using a steamer, or spraying your equipment down with bleach solution.

As the summer boating season winds down and landowners request their docks and equipment be pulled out for storage, it would be appreciated if you took a couple extra minutes to inspect for zebra mussels along the wheels and dock support systems that sit in the water all year. If

you feel something like sandpaper, it may be a small zebra mussel. Sizes can range from

IMPLEMENTATION

Lake Service Provider Outreach



- Citizen Initiation
- In person, phone, email, letters
- 30+ contacted
- Marinas, Sports Shops, Bait Dealers, Storage & Rentals
- *Challenge: “on-the side” contacts

• Results

- Trailer specific to Big McKenzie
- Bleach solution used
- Hot Water Sprayer purchase
- EDUCATORS!



IMPLEMENTATION

Decontamination Ordinance Amendment (Burnett/Washburn Co)

- Citizen Initiation
- County Committee → County Board → Ordinance

“If a decontamination station is available for use at a public or private access, the boater shall decontaminate per posted directions using the station provided.”

- **Permission from landing owner**
- **Station location**
- **Sloped landing/Runoff**
- **Commitment needs (replace solution daily)**
- **CBCW inspector helpful, but not necessary**
- **Enforcement**

IMPLEMENTATION





Lessons Learned - County

- Decontamination is not simple.
- There are statewide branding expectations for signs, and we need formal guidance for them.
- Early detection and ~~rapid~~ response is demanding.
- Be prepared to work across jurisdictional lines.
- Professionals can't do it alone.



BUT...it can be done!



MONITORING & EVALUATION

Management team will continue to meet and communicate:

- Monitoring Plan, eDNA, veliger, and plate samplers
- Watercraft inspection and decontamination
- Education/outreach
- Network with surrounding counties and lake and river groups



Learn more: www.wclra.org



**All
clear?!**

Lisa Burns, Washburn County,
lburns@co.washburn.wi.us, (715) 468-4654

Cathie Erickson, Washburn County Lakes &
Rivers Association and Wisconsin Lakes,
cathie.erickson@aol.com, (612) 910-3566

Pamela Toshner, WDNR,
pamela.toshner@wi.gov, (715) 635-4073