

Citizen-based Monitoring

Eva Lewandowski, PhD
Wisconsin Department of Natural Resources



Citizen Science

Public involvement in scientific research



Citizen-based Monitoring

Public involvement in long-term monitoring of natural resources



Wisconsin Citizen-based Monitoring Network

www.wiatri.net/cbm



- Partnership of 190+ monitoring groups & projects
- Mission: Improve effectiveness of volunteer monitoring efforts
- Resources for project leaders, volunteers, researchers, and land managers

Wisconsin Citizen-based Monitoring Network

www.wiatri.net/cbm

Resources:

- Conferences
- Trainings
- Funding
- Equipment Lending
- Newsletters
- Event Calendar
- Technical Support





1900: Christmas Bird Count



1966: Breeding Bird Survey



1976: Annual Midwest Crane Count



1978: Loon Watch



1981: WI Frog & Toad Survey



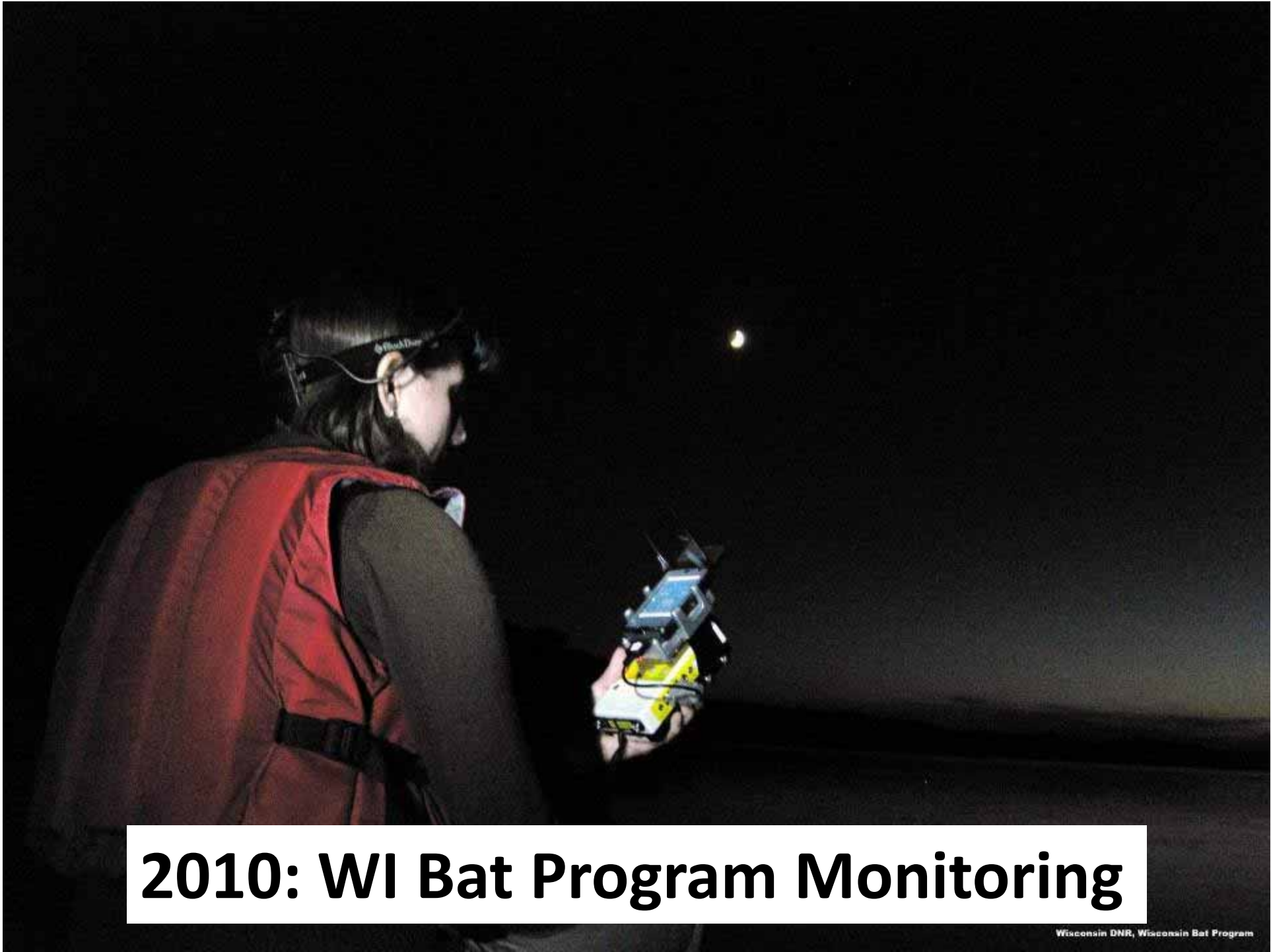
1986: Citizen Lake Monitoring Network



1995: Volunteer Carnivore Tracking



1996: Water Action Volunteers



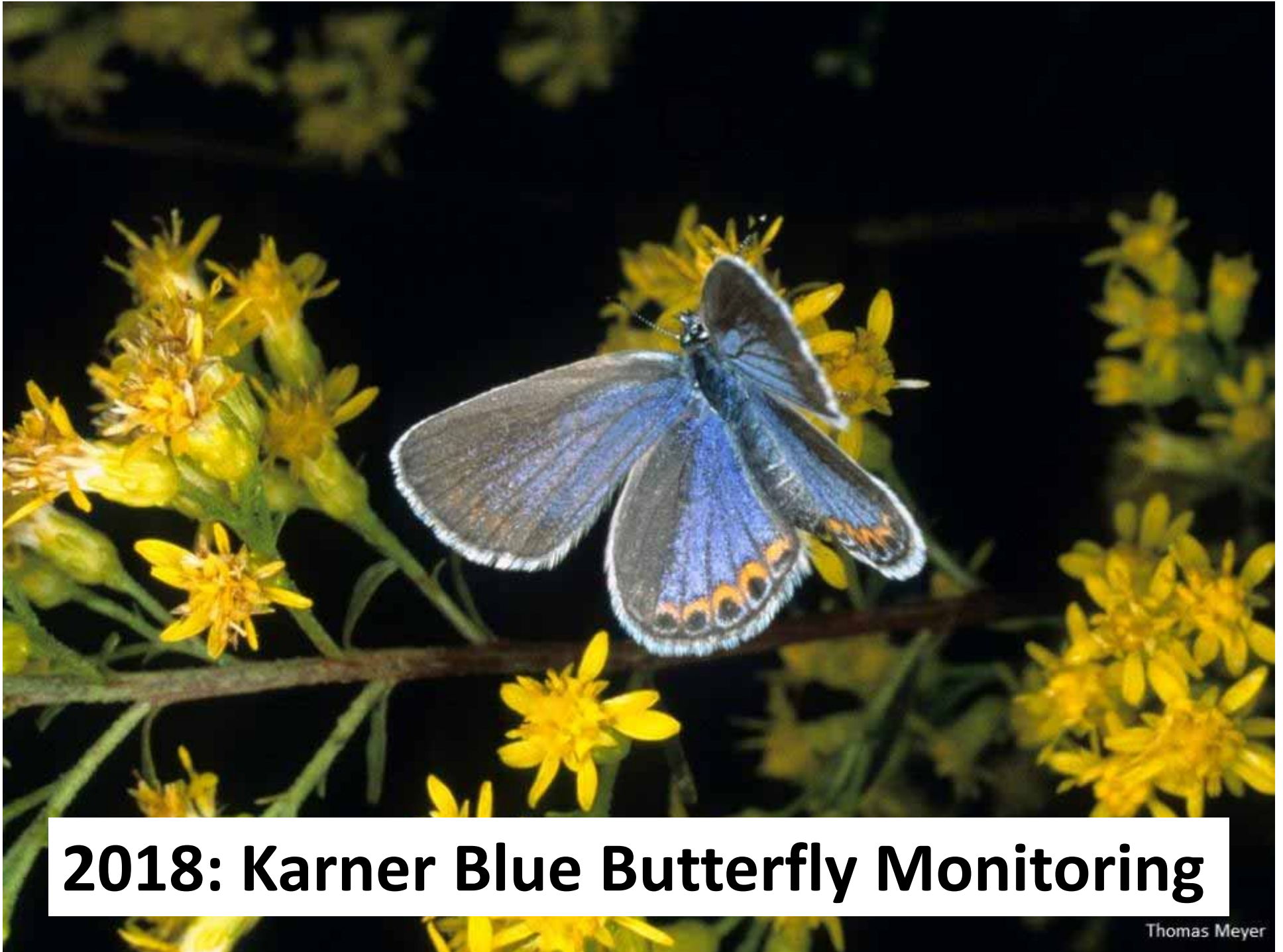
2010: WI Bat Program Monitoring



2012: WI Turtle Conservation Program



2014: Rare Plant Monitoring Program



2018: Karner Blue Butterfly Monitoring

Thomas Meyer



We Need Your Help



Wisconsin Mussel Monitoring Program

Michael Kienitz

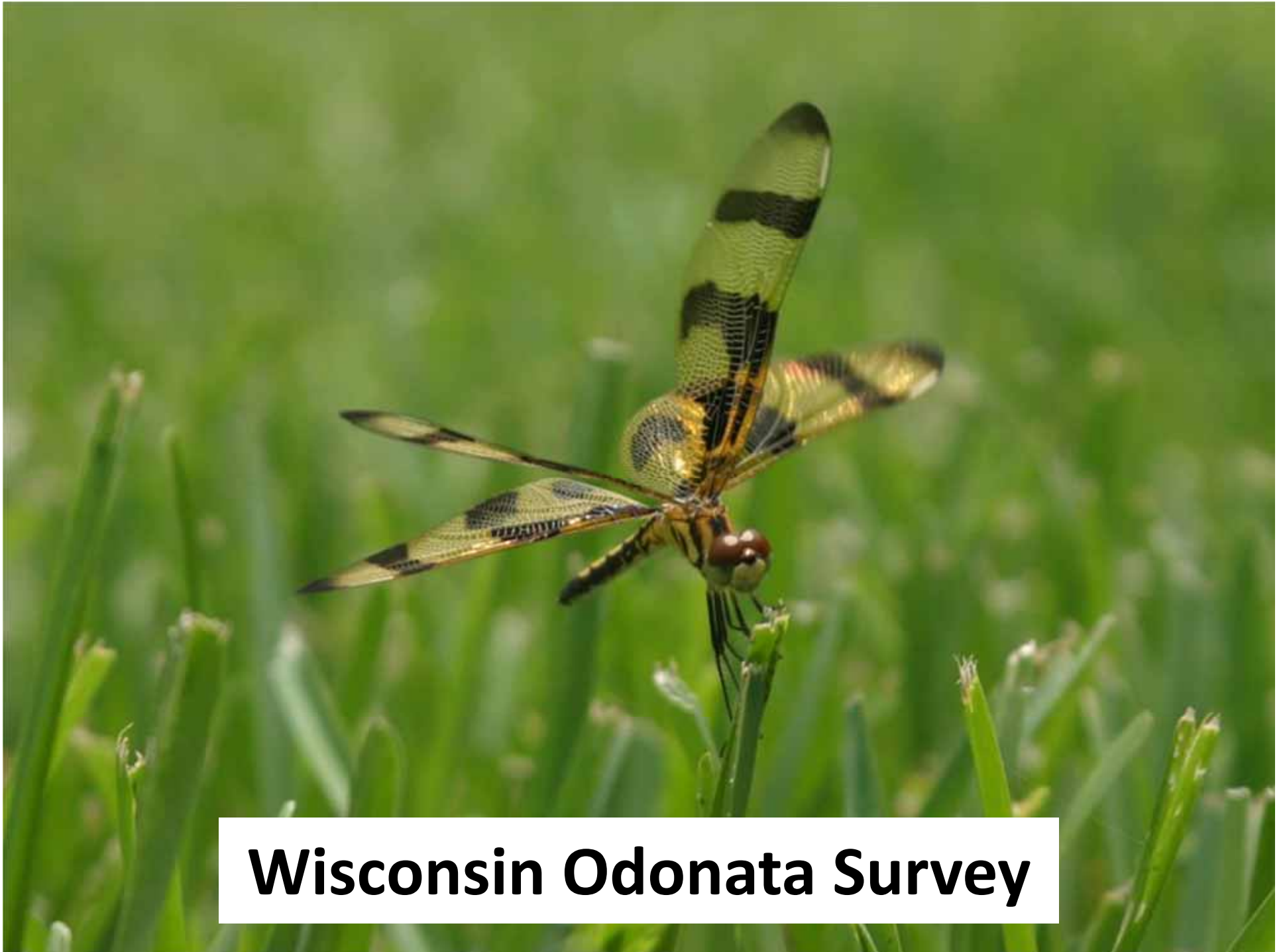


Monitoring Mussels

- Take photos
- Share on iNaturalist
- Collect shells
- Attend a WMMP event



wiatri.net



Wisconsin Odonata Survey

Monitoring Odonates



wiatri.net



*Are you interested
in Damselflies and
Dragonflies?*

*Are you fascinated by them
and want to learn more?*

*Would you like to connect with
others who have the same
interest?*

If so, please join us!



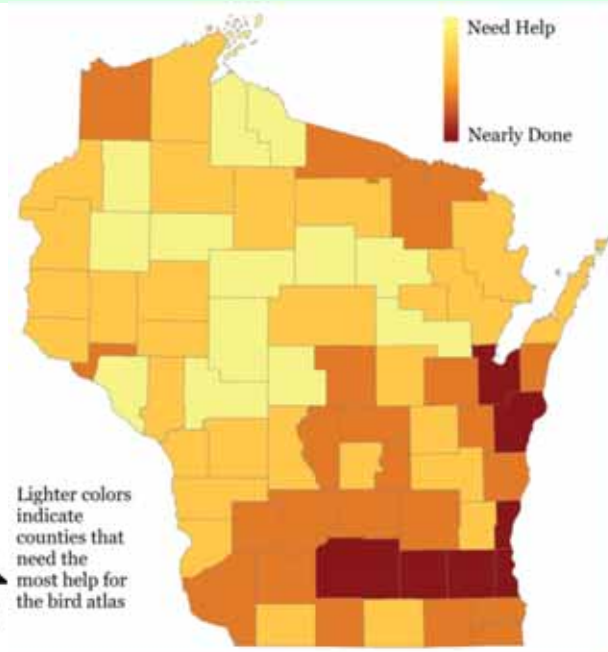
Wisconsin Breeding Bird Atlas II

We Need Your Help

*Not an expert? Not a problem.
Every sighting counts*

We have had great coverage in some counties, but there are still blocks that need coverage in every area of the state. Get involved in this historic bird survey by going to

wsobirds.org/atlas





Wisconsin Bumble Bee Brigade

wiatri.net



Wisconsin Bumble Bee Brigade Trainings

FULL June 4th, 9am-1pm
UW-Green Bay Laboratory Science Building
Green Bay, WI

June 19th, 9am-1pm
UW-Madison Arboretum
Madison, WI

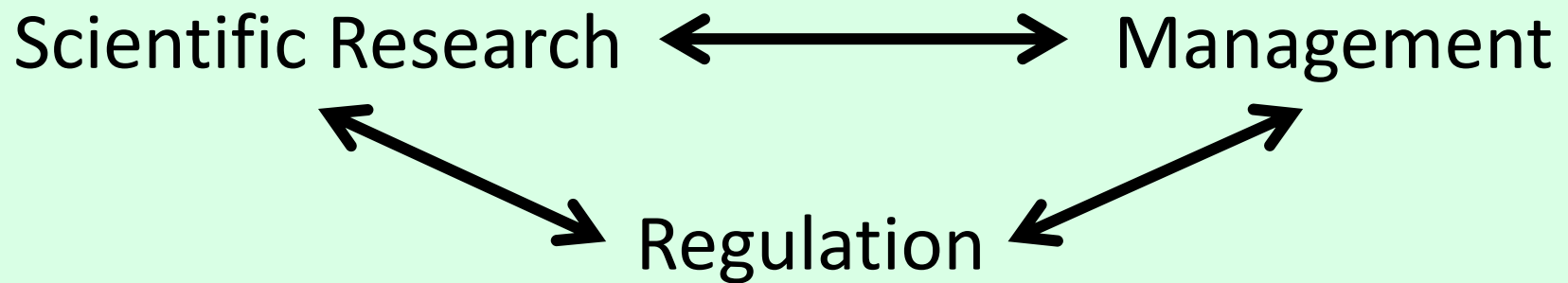
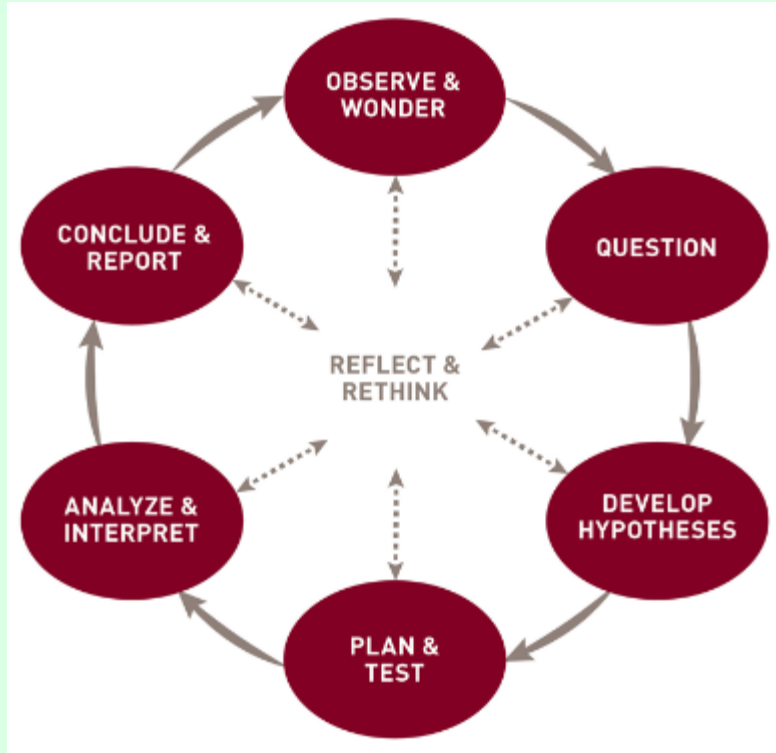
June 25th, 9am-1pm
Norskadalen Nature and Heritage Center
Coon Valley, WI

FULL July 9th, 9am-1pm
Schlitz Audubon Nature Center
Milwaukee, WI
Natural Resources Foundation Field Trip #115



wiatri.net

How Are Data Used?



Botulism Mortality- Princé et al. 2018



Botulism Mortality- Princé et al. 2018





**Rare Plant
Monitoring
Program**



Thomas Meyer

“Unless some management is done, I don’t think the orchids will survive.”
---John and Maria Scholze



Endangered Species Act

- Provides federal protection to threatened and endangered species
- USFWS bases listing decisions on “the best scientific and commercial data available,” including citizen science data





Questions?

Eva.lewandowski@wisconsin.gov



wiatri.net/cbm

facebook.com/WisconsinCitizenBasedMonitoringNetwork

twitter.com/wiscbm