

CENTRAL WISCONSIN TROUT UNLIMITED

- **21 State Chapters**
- **500 Chapters Nationwide**
- **300 Local Members**
- **Central Sands Region**

CENTRAL WISCONSIN TROUT UNLIMITED

- **Stream Restoration Workdays**
- **Stream Monitoring**
- **Fly Fishing and Tying Classes**
- **Youth Programs**
- **cwtu.org**

WHY ARE WE INVOLVED

- **Most Members are Avid Fly Fishers**
- **Natural Concern for Area Water Health**
- **Fishing Opportunities (Biotic Index)**
- **Restoration Targets**

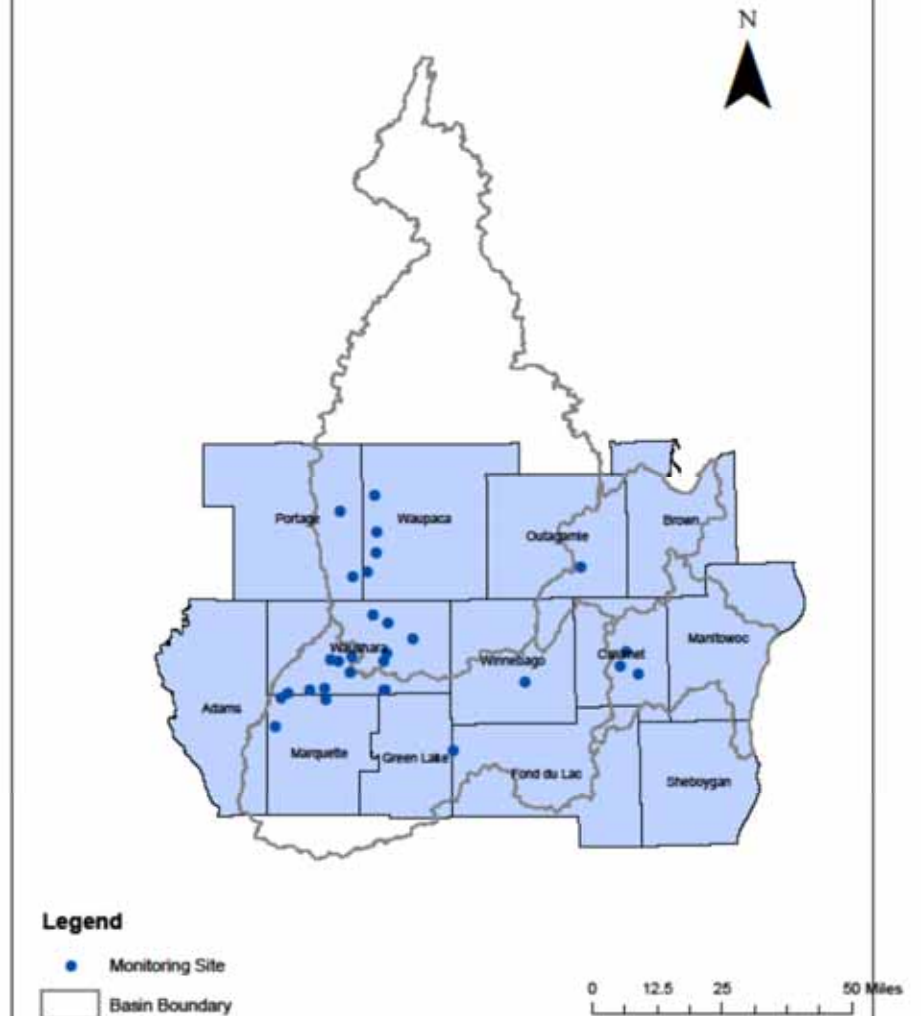
CWTU RIVERKEEPERS

- **23 Active Teams**
- **30 Stream Locations**
- **65 Volunteers**

Central Wisconsin Trout Unlimited Monitoring Sites



Central Wisconsin Trout Unlimited Monitoring Sites



HOW WE RECRUIT

- **Cabin Fever Days – Appleton FVTU**
- **TroutFest – Winneconne CWTU**
- **Tabletop Display and Sign up Sheets**
- **Presentations at Monthly Meetings**

WHAT DO I DO

- **Identify New Targets with Dave**
- **Recruit New Volunteers/Teams**
- **Facilitate Training**
- **Supply and Refurbish Equipment**
- **WCBM Partnership Grant**
- **Troubleshoot**

SUCCESS EXAMPLES

- Mecan River Headwaters Total Phosphorous
- Soules Creek WAV Monitoring
- Chaffee Creek WAV Monitoring (Flow Rates)
- North Branch of the Little Wolf River in Ogdensburg

WATER ACTION VOLUNTEERS AND WISCONSIN DNR PARTNERSHIP 2016



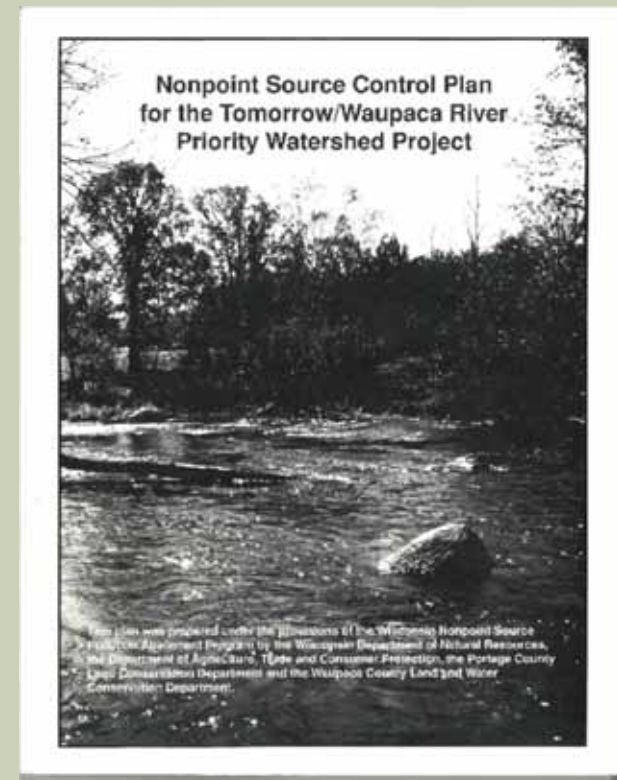
PRESENTATION SUMMARY

- Waupaca/Tomorrow River 2016 Project Summary
- WAV Contributions to the Project
- Waupaca Monitoring Results
- Mekan River 2016
- Mekan River Monitoring Results



WAUPACA AND TOMORROW RIVER PROJECT

- Water Quality Assessment of the Waupaca/Tomorrow River Watershed
- 291 Sq Mi Watershed
 - 47% Agricultural Land Use
 - 35% Forested
- 1990-2000s Priority Watershed Improvements to Control NPS
- Comparison to Pre-implementation Water Quality Assessment
 - Nutrients (Nitrates and Phosphorus)
 - Fish Community Integrity
 - Aquatic Insect Community Integrity
 - Available Fish Habitat
 - Water Temperature
- Did the Best Management Practices Implemented Through the Priority Watershed Project Accomplish the Goals of Maintaining and Enhancing the Water Quality?

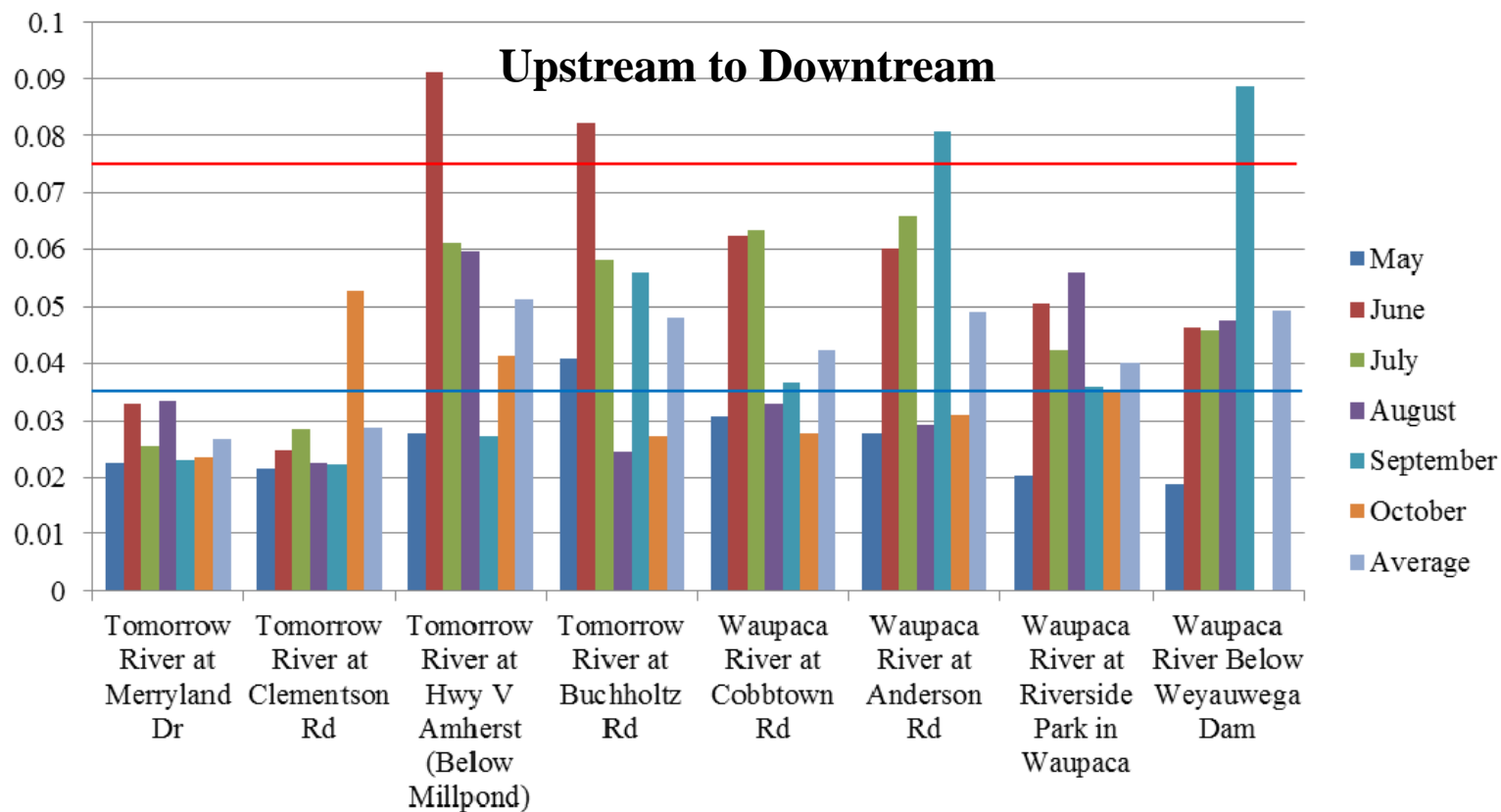


WAV ACCOMPLISHMENTS

- Planning Meeting in February 2016
 - Project monitoring needs
 - Discussed proposed monitoring locations
 - Recommendations for where and how to recruit volunteers
- Recruited one volunteer at CWTU TroutFest
- Trained one volunteer
- Monitored 8 locations through coordination with CWTU, 14 total locations of 22 were monitored by WAV
 - Total of 80 samples collected by volunteers
 - Reduced field days collecting water samples
 - Expanded project

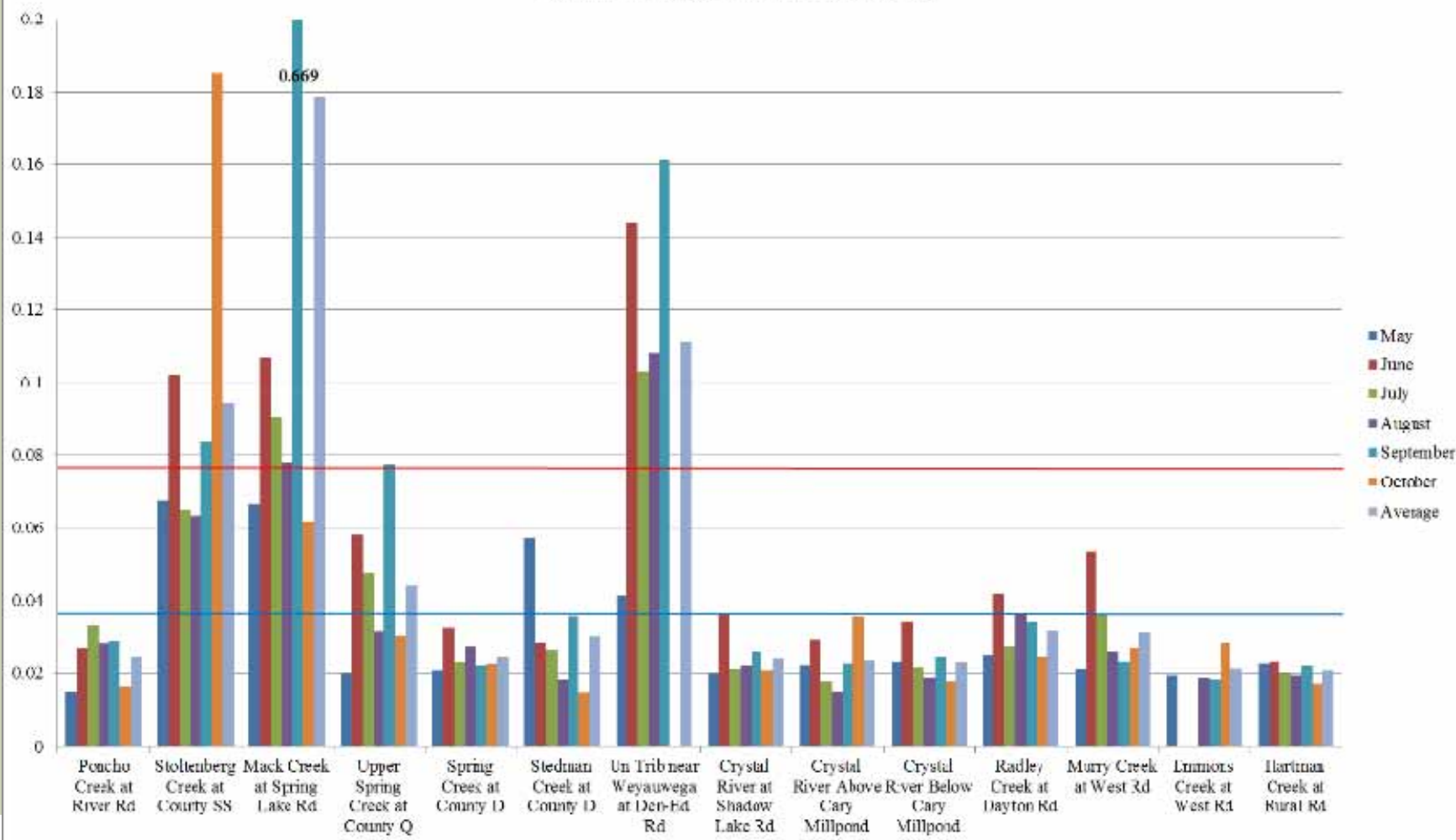
MONITORING RESULTS

Waupaca and Tomorrow River 2016 Total Phosphorus Monitoring Results (mg/L)



MONITORING RESULTS

Waupaca River Tributary 2016 Total Phosphorus Monitoring Results (mg/L)



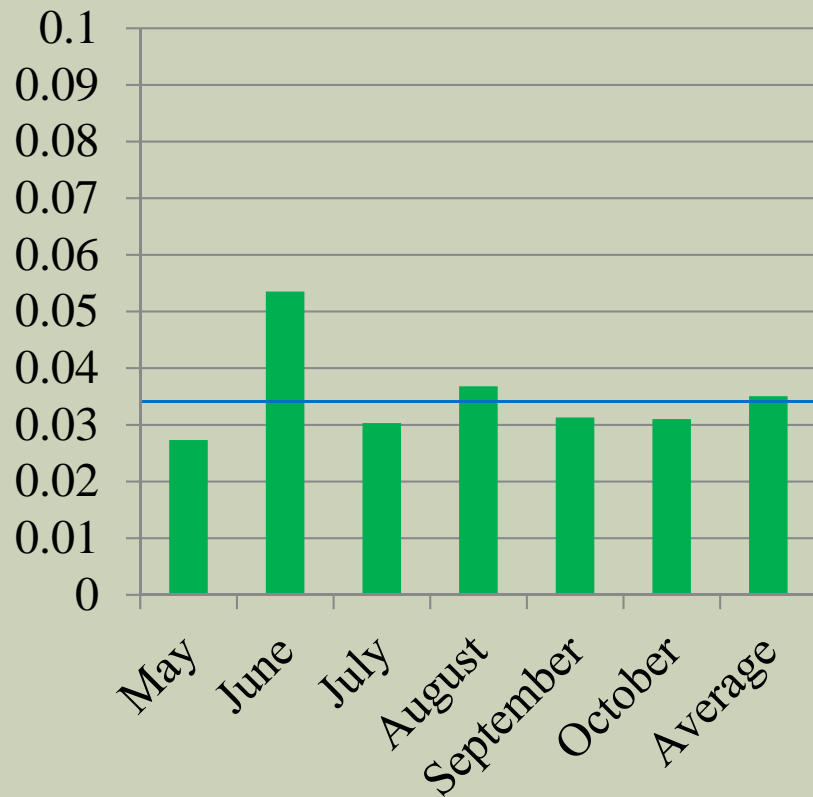
MECAN RIVER 2016

- Concerns Regarding the Water Quality of Mecan Springs and the River
 - Is there excessive phosphorus loading into the springs and river by groundwater?
- Mecan River at Hwy 21 Randomly Selected in 2016 to Assess the Water Quality of Surface Waters in WI
 - Fish
 - Aquatic Insects
 - Habitat
 - One phosphorus grab sample during summer
- Combined Efforts with WAV to Collect Phosphorus Samples May Through October 2016
 - More comprehensive assessment of the nutrient concentration of the river



MECAN RIVER 2016

Total Phosphorus (mg/L)



Fish Community Biotic Integrity

Good

- 400 Brown Trout
- 2 Brook Trout
- Western Blacknose Dace
- Creek Chub
- Native Lamprey
- White Sucker
- Mottled Sculpin

Native Crayfish Observed/No Rusty Crayfish

Aquatic Insect Results Summer 2017

Excellent Habitat

QUESTIONS

David Bolha
Water Quality Biologist
Wisconsin DNR-Oshkosh
920-424-7892
david.bolha@wisconsin.gov