

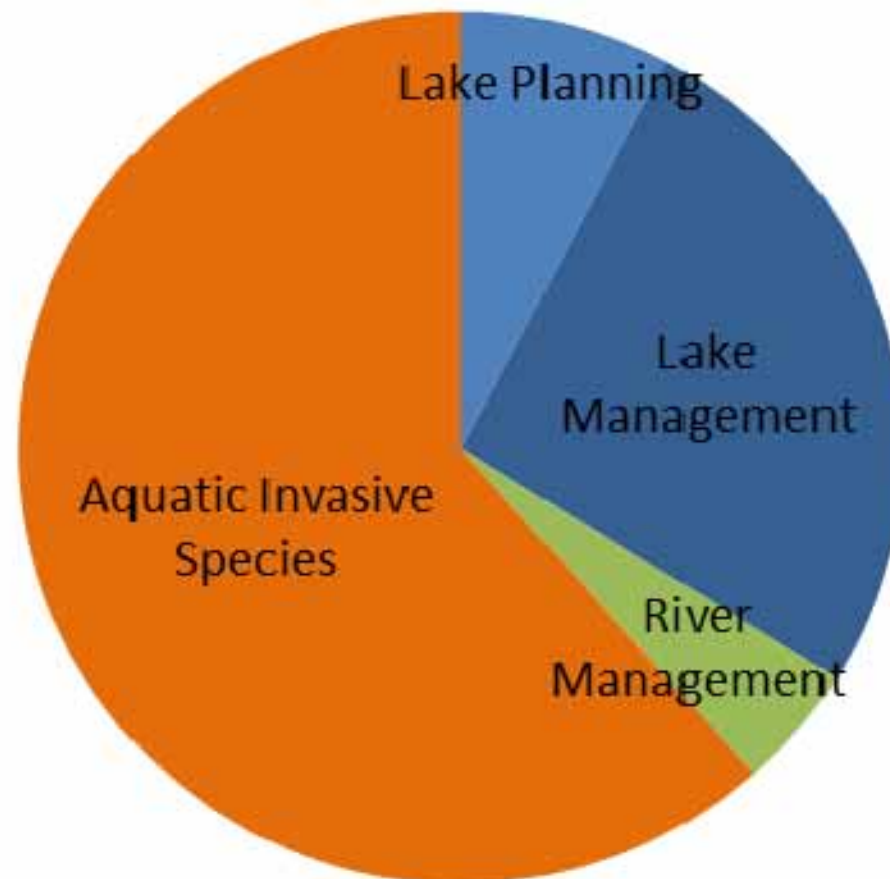


WDNR Surface Water Grants- What's on the Horizon?

Shelly Thomsen
WDNR Lakes & Rivers
Team Leader



Surface Water Grants ~\$6.5M





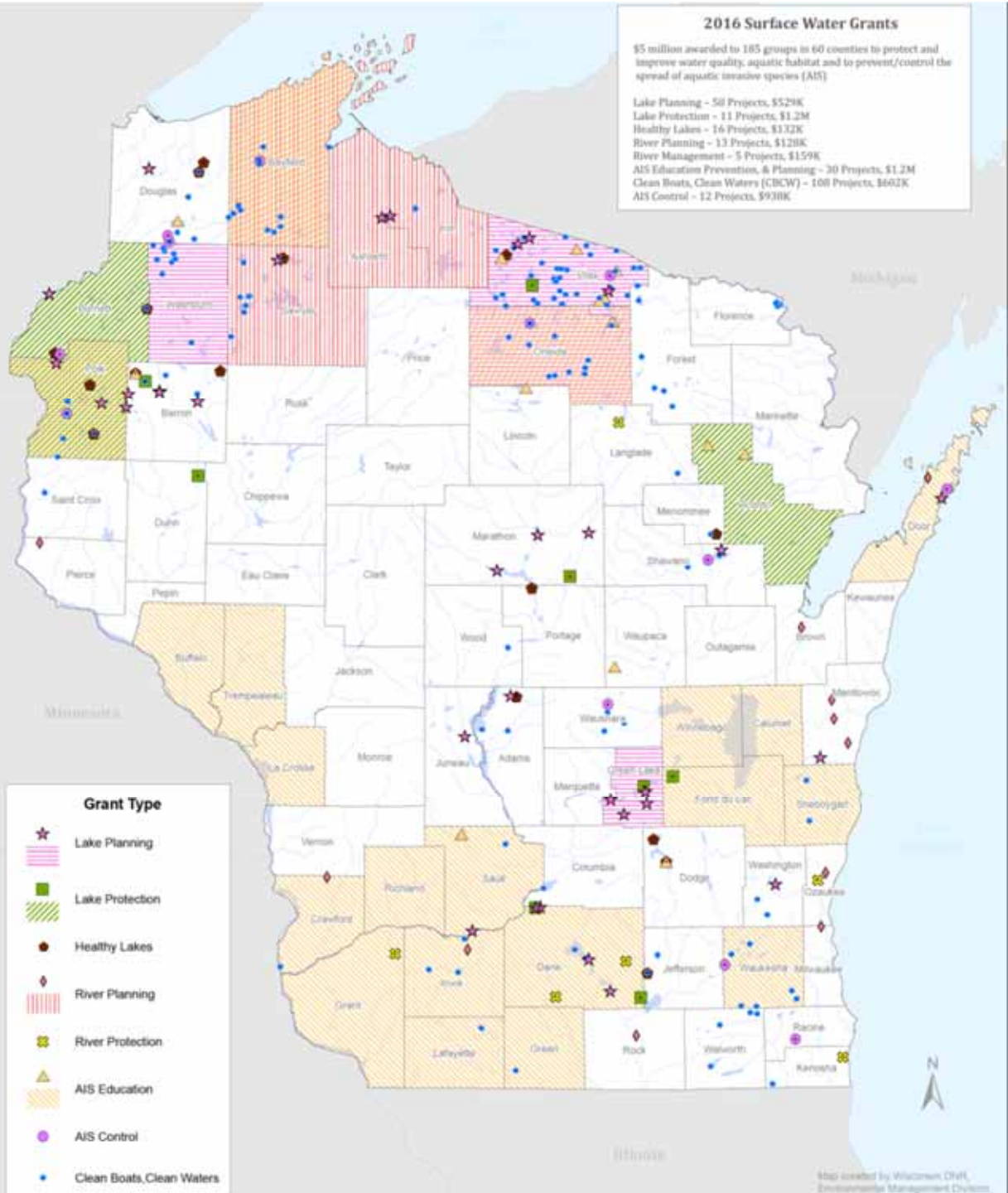
Planning Grants

- Lake Planning - \$3K, \$10K, \$25K
- River Planning - \$10K
- AIS Education/Prevention - \$10K, \$50K, \$150K
- Clean Boats, Clean Waters - \$4,000/200hrs

An underwater photograph showing a large, weathered log covered in brown algae or moss, resting on a bed of colorful, smooth river stones. The water is clear and blue, with some green plants visible in the background.

Management Grants

- Lake Protection
 - LMP Impl - \$200K
 - Land/Easement Acquisition- \$200K
 - Wetland & Shoreline Habitat Rest - \$100K
 - Healthy Lakes – \$1000/BMP
- River Protection - \$50K
- AIS Control - \$200K



Who can apply?

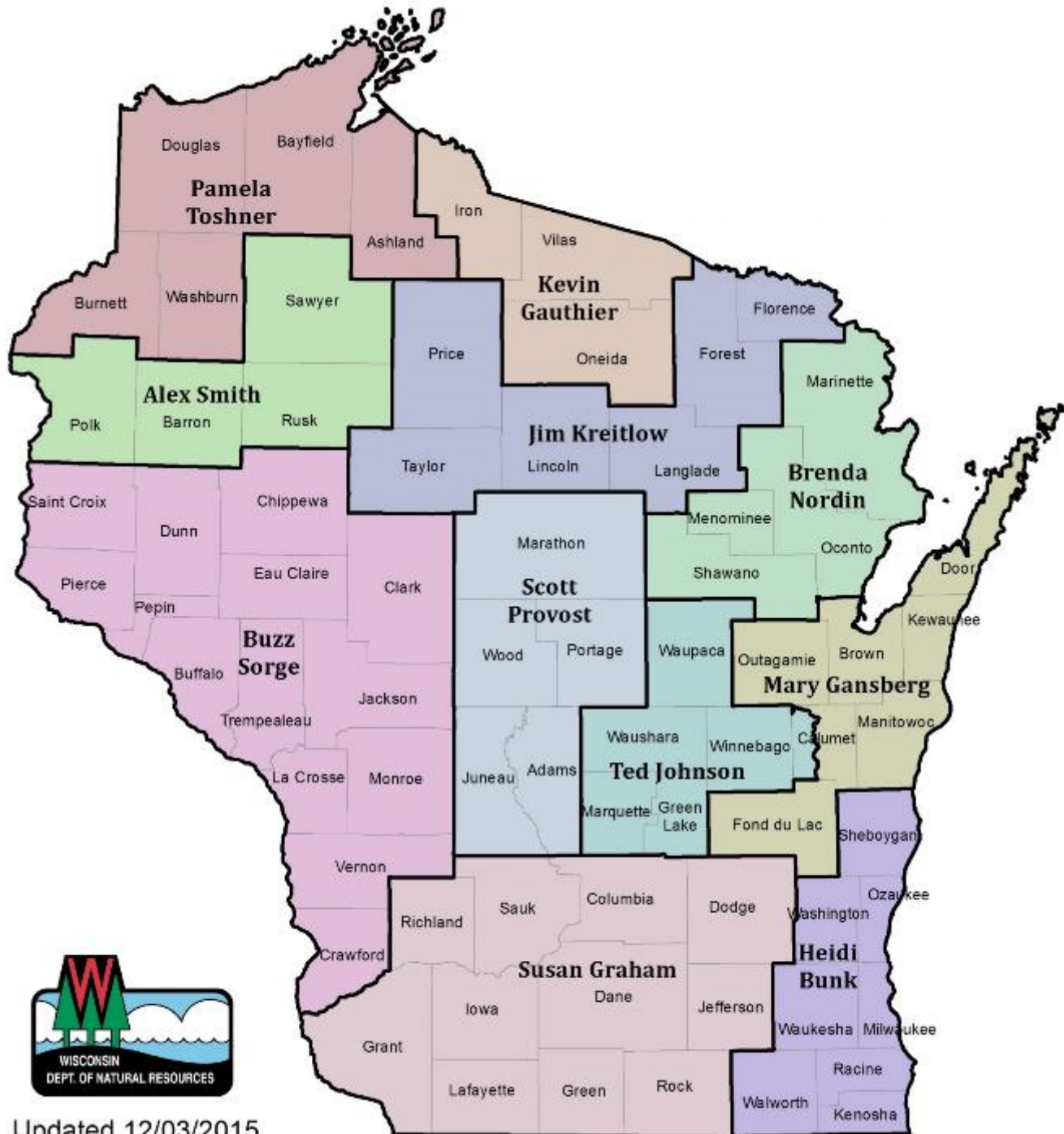
Applicant Types	AIS Grants	Lakes Grants*	Rivers Grants
Counties, cities, towns and villages	✓	✓	✓
Federally recognized tribal governing body	✓	✓	✓
Other local governmental units as defined in s. 66.0131(1)(a), Wis Stats.	✓	✓	✓
Public Inland Lake Protection & Rehabilitation Districts	✓	✓	✓
Town sanitary districts	✓	✓	✓
Qualified lake associations	✓	✓	
Qualified river management organizations	✓		✓
Qualified school districts (not for Lake Protection Grants)	✓	✓	
Private and public colleges, universities and technical schools	✓		
Qualified nonprofit conservation organizations	✓	✓	✓
Qualified nonprofit organizations	✓		
State and federal natural resource agencies	✓		
Federal Energy Regulatory Commission (FERC) licensed hydroelectric corporations	✓		



Deadlines & Local Share

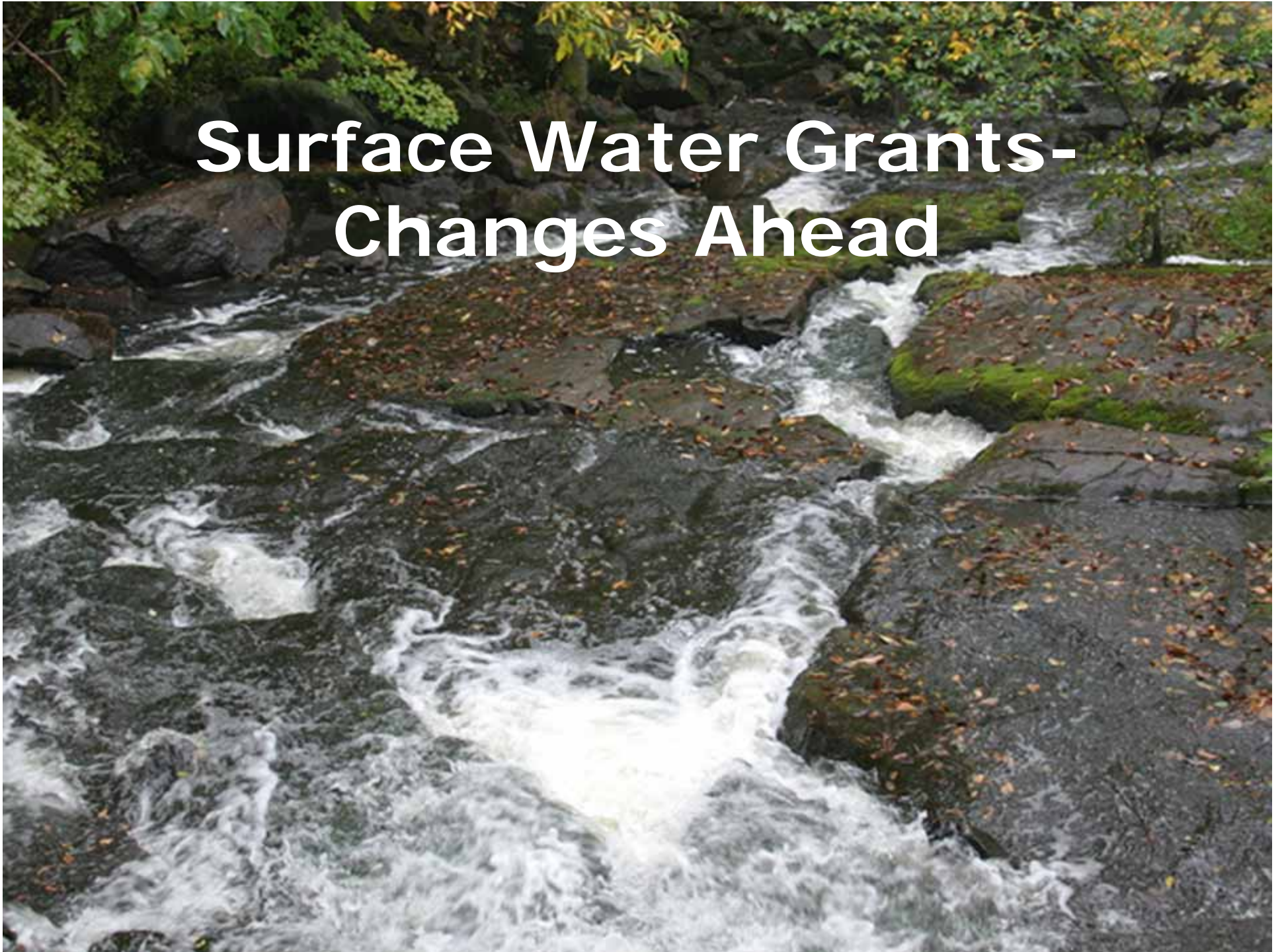
December 10 - Planning	February 1 - Management	Year-Round
<ul style="list-style-type: none"> • Lake Management Planning <ul style="list-style-type: none"> ◦ Small Scale ◦ Large Scale • Lake Classification & Ordinance Development • Aquatic Invasive Species (AIS) <ul style="list-style-type: none"> ◦ Education, Prevention & Planning ◦ Clean Boats Clean Waters • River Planning 	<ul style="list-style-type: none"> • Lake Protection <ul style="list-style-type: none"> ◦ Land/Easement Acquisition ◦ Wetland & Shoreline Habitat Restoration ◦ Lake Management Plan Implementation ◦ Healthy Lakes Project • AIS Established Population Control • River Protection <ul style="list-style-type: none"> ◦ River Management ◦ Land/Easement Acquisition 	<ul style="list-style-type: none"> • AIS Early Detection & Response • AIS Maintenance & Containment

Surface Water Grant Program	Local Share Percentage
Aquatic Invasive Species	25%
Lake Management Planning	33%
Lake Protection & Classification	25%
River Protection Grants	25%



Updated 12/03/2015

Surface Water Grants- Changes Ahead





Code Revision Schedule

2016

- Summer - Solicit Input
- Fall - Draft rule
- Winter - Fiscal est & econ analysis

2017

- Summer - Public hearings
- Fall - Secretary and NRB approval
- Winter - Legislature approval

2018

- Spring - Rule published and becomes effective

FY19 -- Grants utilize updated rule



What is the best way to get your feedback?

- AIS Survey
- Regional Listening Sessions
- Partner outreach
 - WL, RA, WWA, Land+Water
 - Lake Tides



Questions?

Shelly.Thomsen@wisconsin.gov

608-266-0502

<http://dnr.wi.gov/aid/surfacewater.html>