

# Make A Splash

## Overview of Paddle On Expedition Data



# Where



# Macroplastics

- Not a single day in which macroplastics were not seen
- Most common:
  - Water and soda bottles
  - Plastic straws
  - Fishing line and rope
  - Cigarette butts
  - Plastic bags
- Increased in abundance near cities and in flood plains

# Microplastics

- Plastic particles <5mm
- Toxins: DDT, BPA
  - Adhere & enter food chain
- From nylon clothing, in cosmetics, debris



# Microplastics



# Microplastics

- Total 22 samples
  - Samples #11, #12 lost in mail
- Majority of samples yielded no microplastics
- 3 samples with 1 piece/L
- 1 sample with 2 pieces/L
- 1 sample with 8 pieces/L
  - Correlating to convergence of Ohio and Miss. Rivers



# Water Quality



- ~12 miles
  - GPS location (Garmin 72)
  - 60 cm turbidity tube
  - Sonde (YSI Pro2030)
    - Dissolved oxygen
    - Specific conductivity
    - Total dissolved solids
    - temperature

THANK YOU!





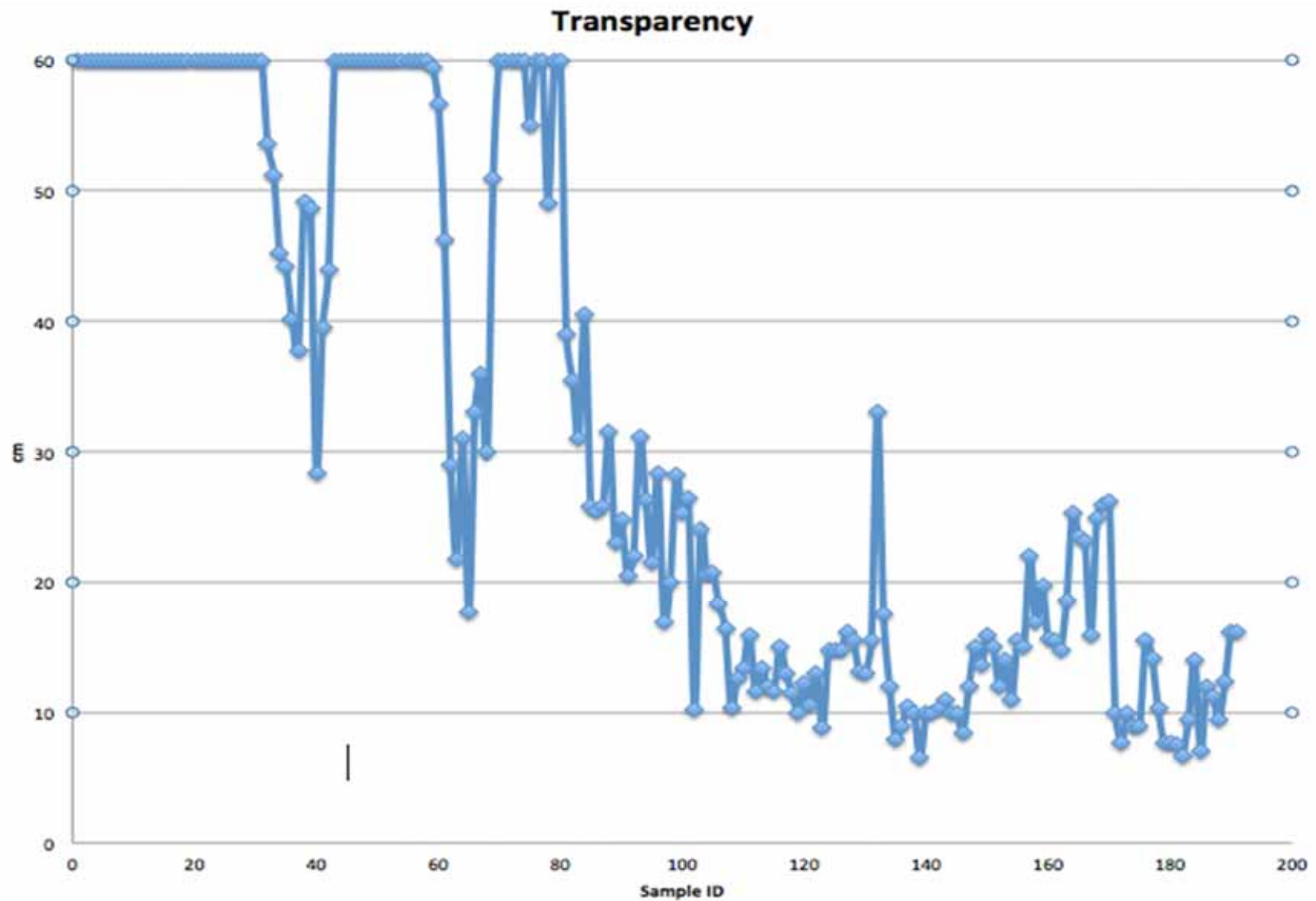
# Super burly



# Transparency



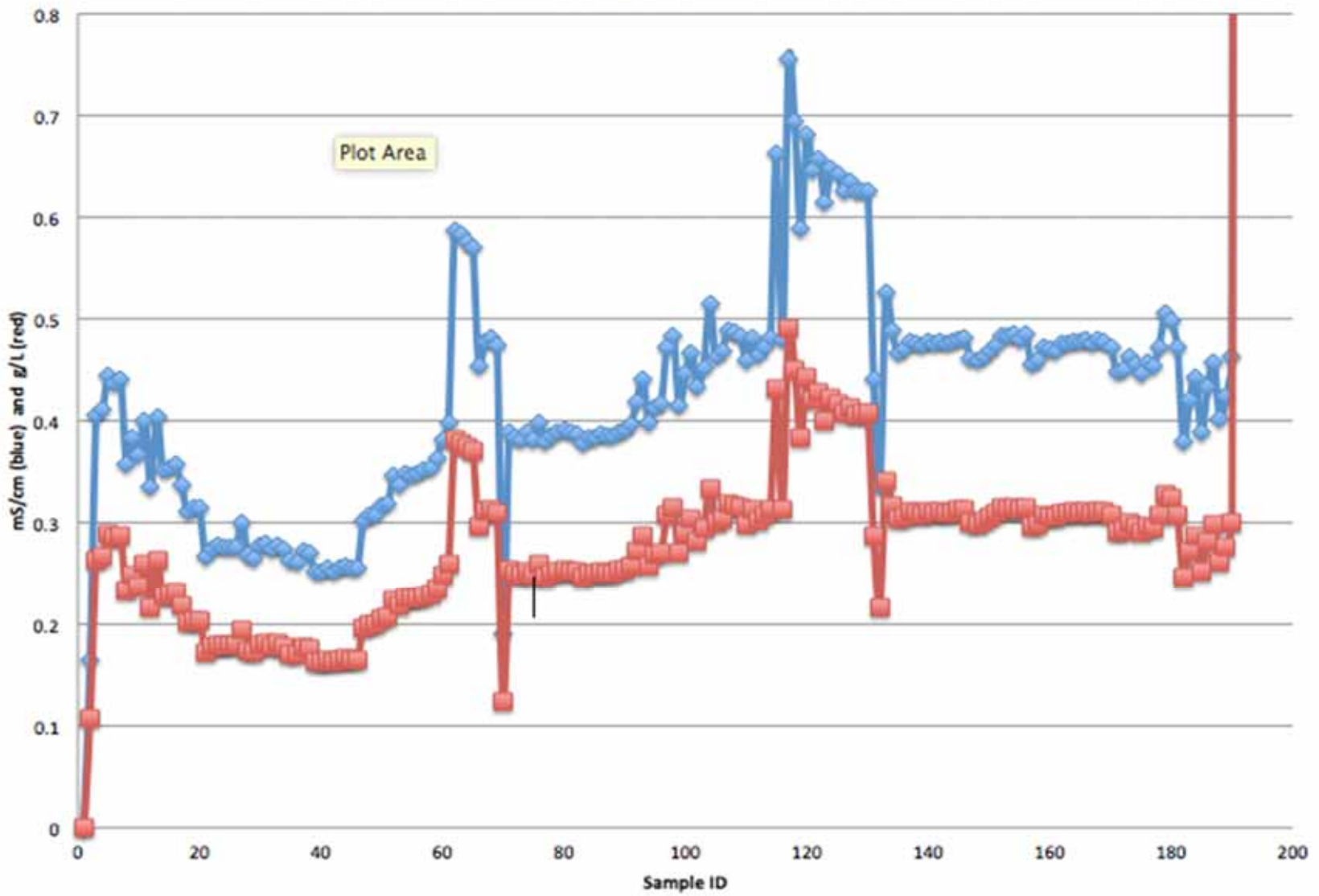
# Transparency



# Total Dissolved Solids & Specific Conductivity



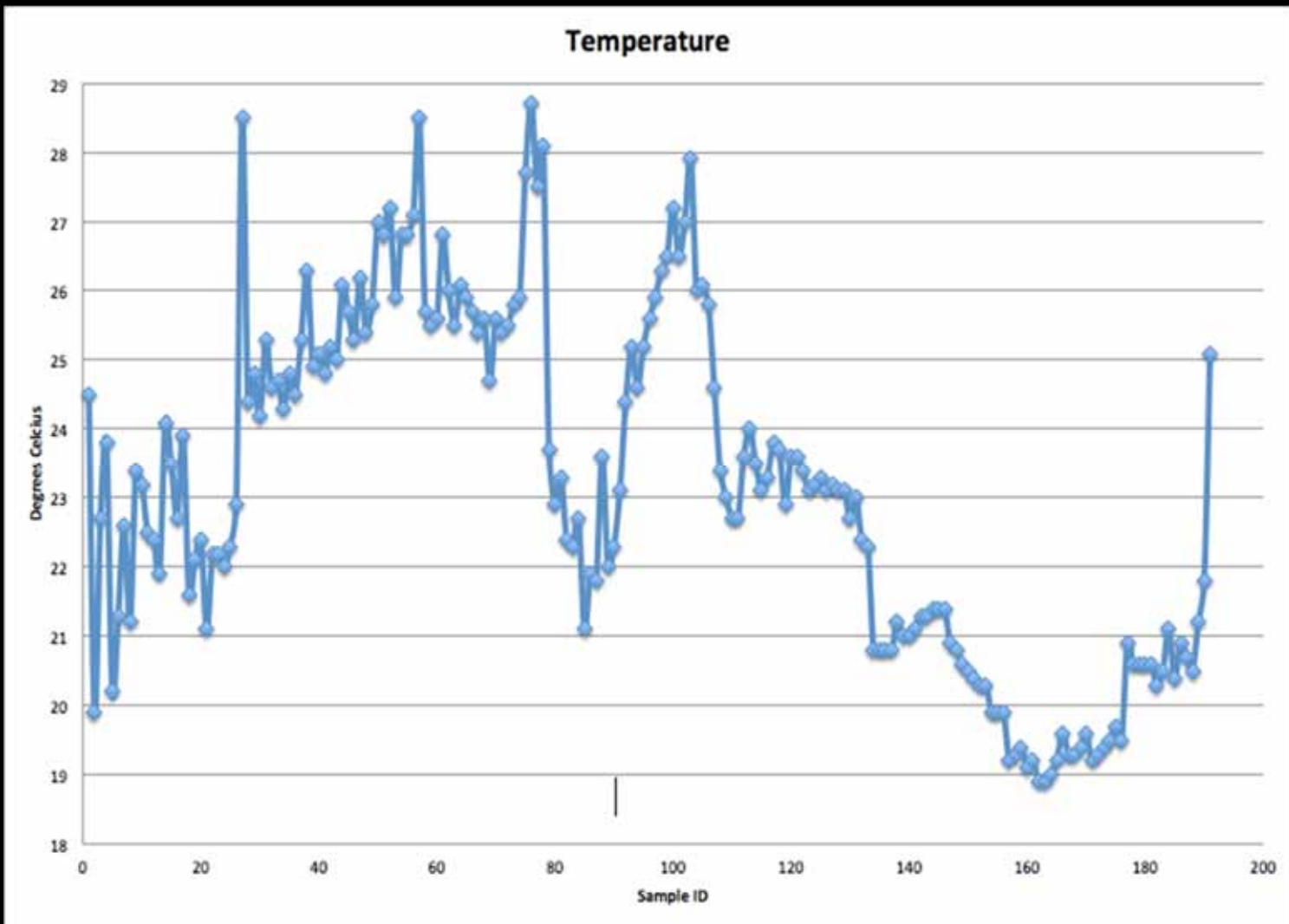
### Specific Conductivity & Total Dissolved Solids



# Temperature



# Temperature

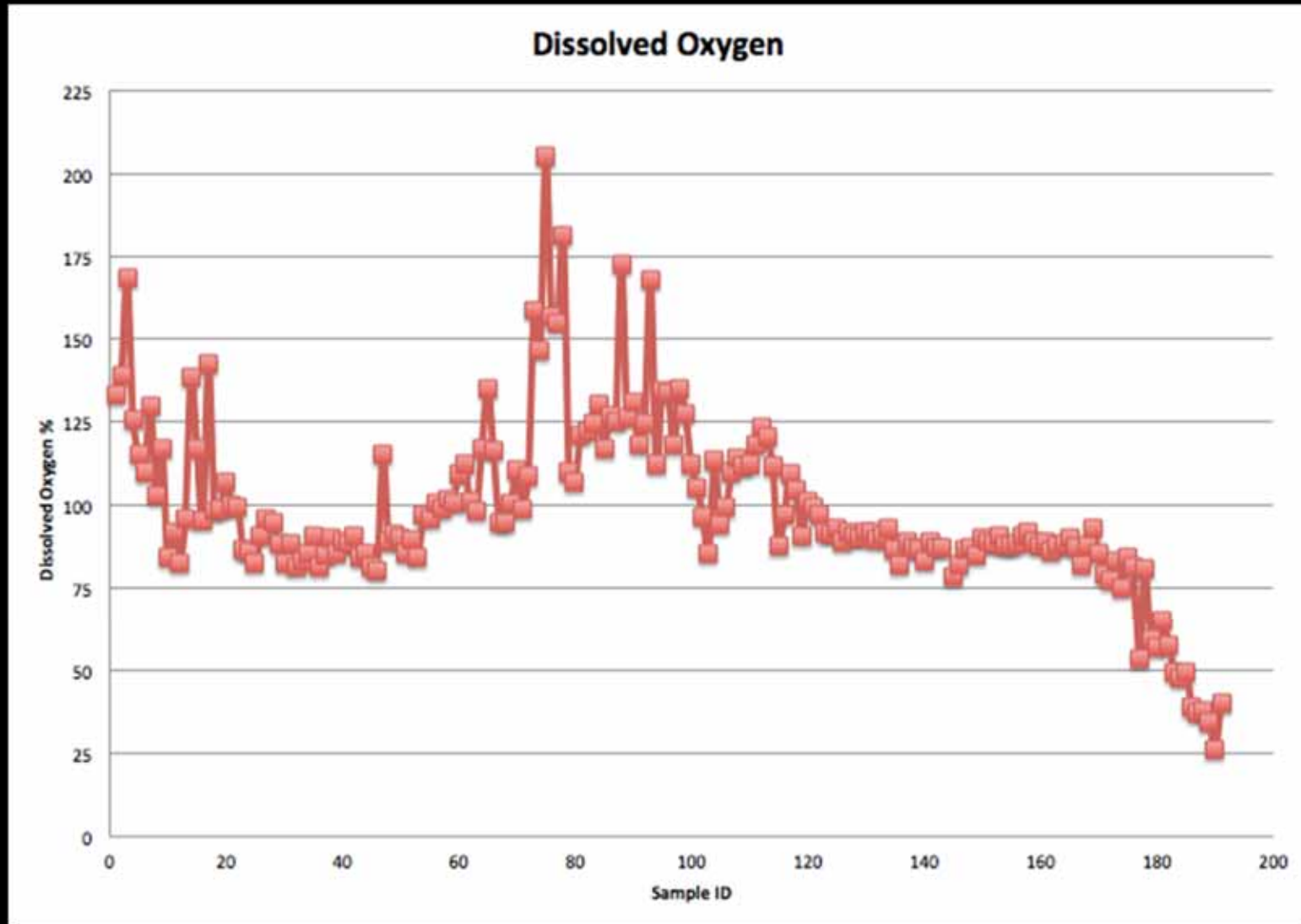


# Dissolved Oxygen





# Dissolved Oxygen





# Questions?

