

# Wisconsin Lakes Partnership Convention April 24, 2015

Presentation by:  
Rick Georgeson  
PACRS President



# ISSUES OF PETENWELL AND CASTLE ROCK FLOWAGES



# Issues of Petenwell and Castle Rock Flowages



# ISSUES OF ROCK FLOWAGES PETENWELL AND CASTLE





# Issues of Petenwell and Castle Rock Flowages

"What's all this green?"  
Researcher/Sailor from NOAA





Regular People Who Love These  
Lakes



# Issues of Petenwell and Castle Rock Flowages



# Issues of Petenwell and Castle Rock Flowages



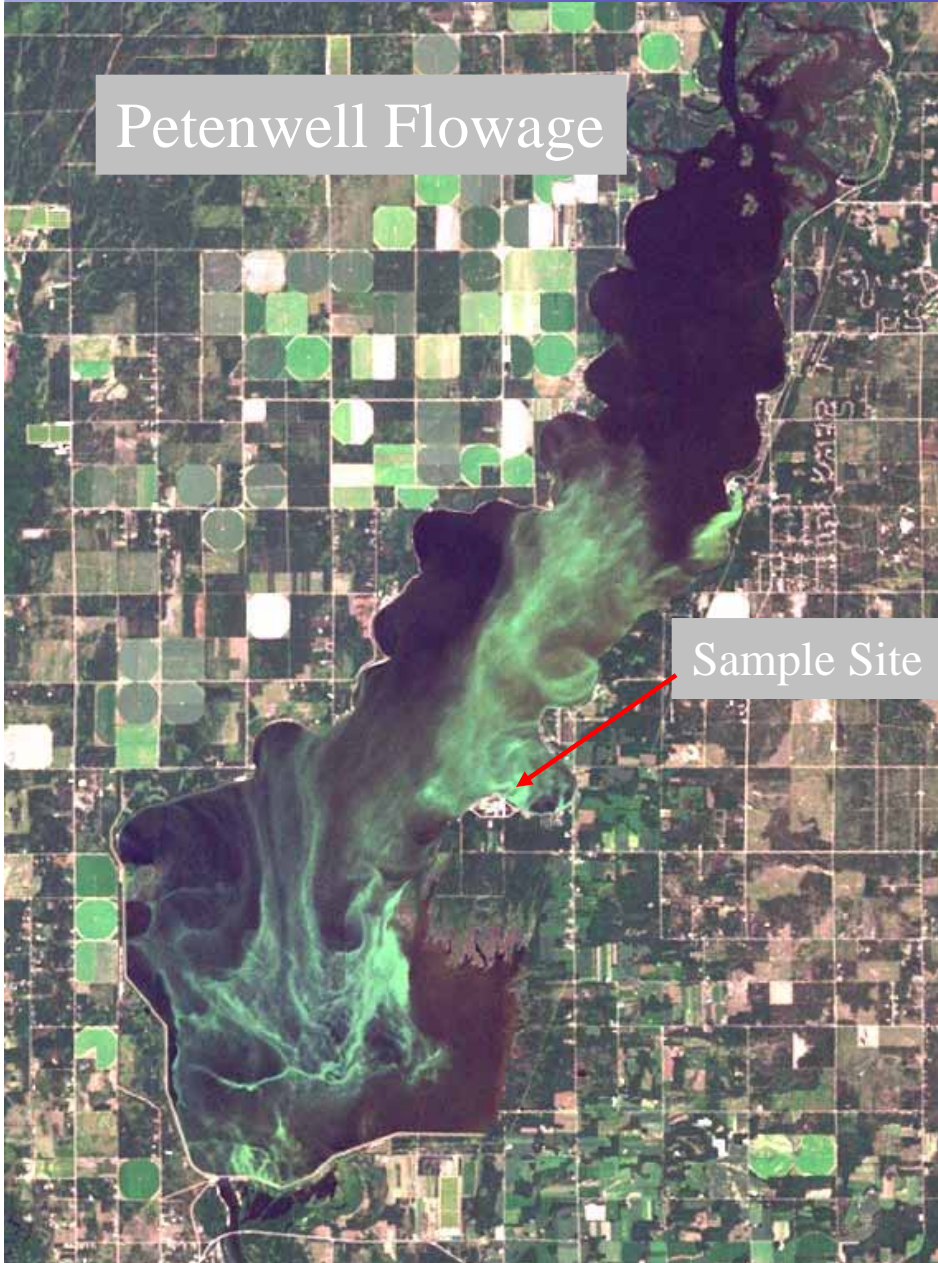


# Issues of Petenwell and Castle Rock Flowages

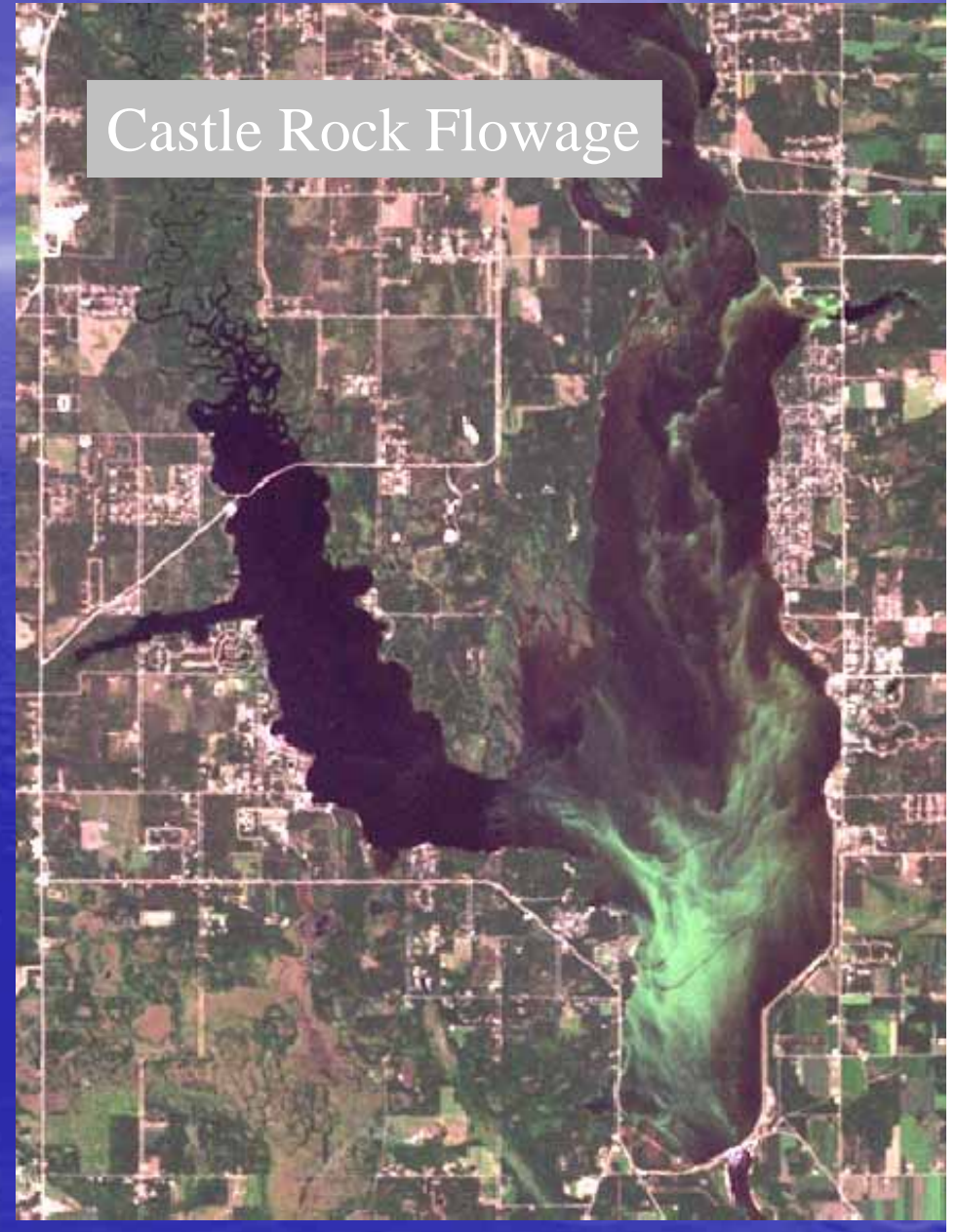




Petenwell Flowage



Castle Rock Flowage





# Issues of Petenwell and Castle Rock Flowages

- Impaired water quality





# Issues of Petenwell and Castle Rock Flowages



- Impaired water quality

# Issues of Petenwell and Castle Rock Flowages

- Loss of recreational use





# Issues of Petenwell and Castle Rock Flowages





# Issues of Petenwell and Castle Rock Flowages



- Decline of property value and tax revenue

## **WANT TO HELP IMPROVE WATER QUALITY OF THE PETENWELL/CASTLE ROCK FLOWAGES**

You are invited to attend a meeting facilitated by Adams and Juneau Land and Water Conservation Departments for the purpose of reviewing and discussing natural resource management activities.

Please extend this invitation to other members of your organization and/or other individuals who may be interested in attending the meeting.

If you are unable to attend but wish to gain knowledge of the meeting and/or provide comment, please contact Chris Murphy at 608-339-4269.

**Meeting Date: April 3, 2007**

# 60 interested citizens

- River Alliance
- County Conservationists
- DNR



# Guest Speakers

- Educated on water issues
- Lake District
- Lake Association

# River Alliance of Wisconsin

- Guidance
- Steps to follow



# Formalized Selected a name

- Petenwell and Castle Rock Stewards
- PACRS
  
- Logo
- Articles of incorporation
- By Laws



[www.pacrs.org](http://www.pacrs.org)





Within one year we acquired a  
5013c status

# PETENWELL AND CASTLE ROCK STEWARDS (PACRS)







Regular People Who Love These  
Lakes

# Listening Sessions with former Senator Russ Feingold and Congressman Tom Petri

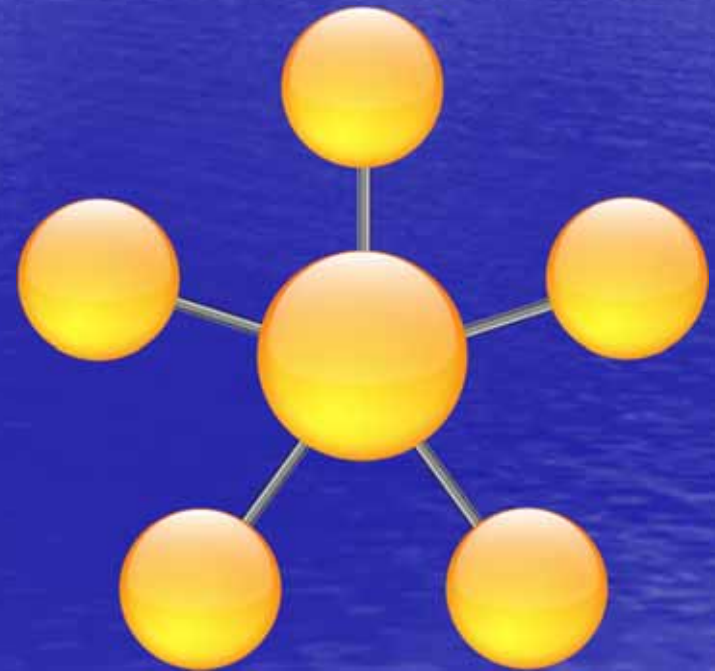




# PACRS communicating with Congressman Petri



- Rhineland Flowage Alliance
- Lake Wausau Association
- Big Eau Pleine Citizen Organization BEPCO
- PACRS
- Stewards of the Dells
- Lake Wisconsin Alliance

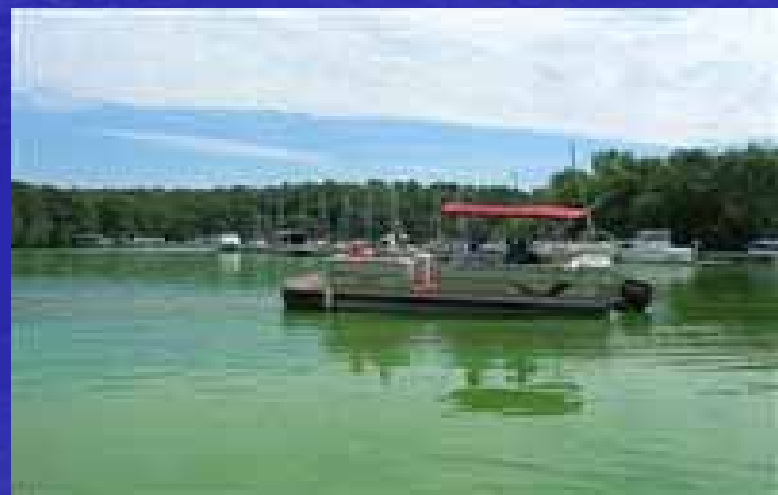




- Lake Leaders Institute – UW Extension
  - - Representatives from 18 lakes

**WHAT HAPPENS ON THE  
LAND  
AFFECTS OUR LAKES**

# Pontoons and Politics





# Pontoons and Politics



**Politicians in attendance: Former Representative Marlin Schneider, Senator Julie Lassa, Mark Seitz (from Congressman Ron Kind's office)**





Regular People Who Love These  
Lakes





Regular People Who Love These  
Lakes



# Pontoons and Politics





# PONTOON AND POLITICS



**FEDERAL AND STATE POLICY-MAKERS COMMUNICATING**

# RESULTS OF PONTOON AND POLITICS

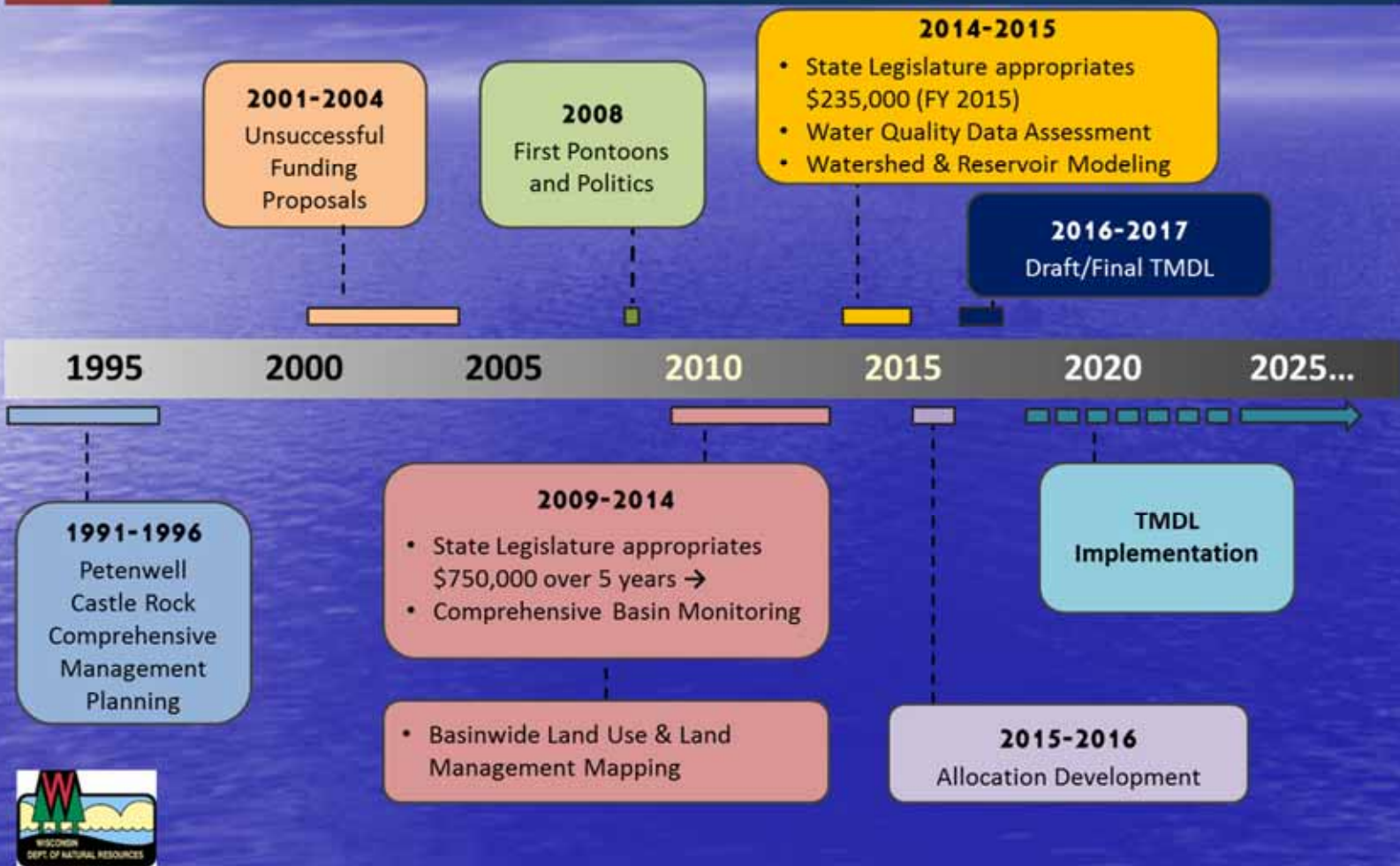
- Funding to WDNR to implement a study for the purpose of establishing Total Maximum Daily Loads for the Upper Wisconsin River.





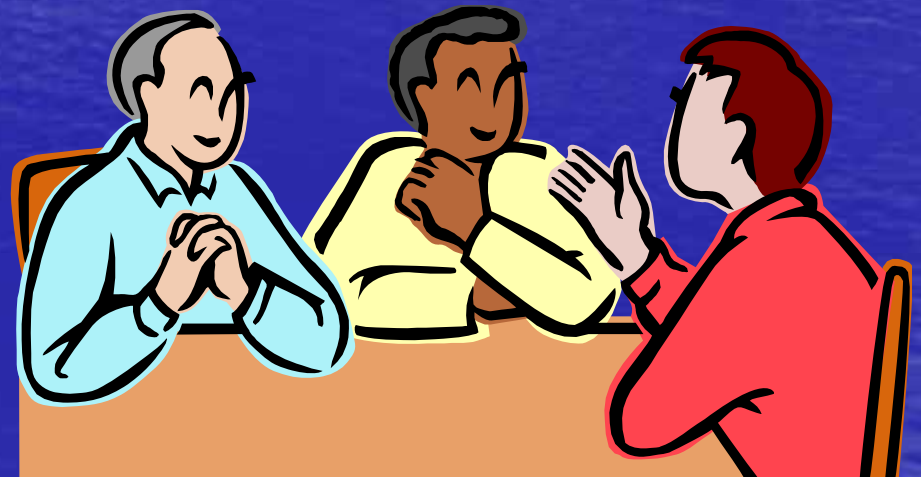
# WRB Water Quality Improvement Project

## Past, Present and Future.....



Regular People Who Love These  
Lakes

- Conducted four public sessions to educate the public about water quality and river management issues.





# Wisconsin River 101







- 
- TOURED NEENAH PAPER COMPANY WASTE WATER TREATMENT FACILITY
  - LEARNED ABOUT POINT SOURCES AND WHAT EFFORTS ARE TAKEN TO REDUCE PHOSPHORUS

- Along with Friends of Mill Creek, PACRS toured watershed in Portage and Wood Counties.
- Learned current Best Management Practices (BMP) regarding field drainage.







PACRS Tour 400 Cow Dairy Operation

# ACCOMPLISHMENTS

- WATER QUALITY MONITORING FOR TMDL DATA

Secchi Disk training provided by Adams County Land & Water Conservation.

- Monitoring efforts May 2010 – Sept.2010  
every two weeks

- 19 volunteers  
22 Lake Petenwell sites  
14 Castle Rock Lake sites  
Collaboration with UWSP





# Pres of Wis. Conservation Assoc.



# What is a Land Conservation Department (LCD)?



- The Land Conservation Department (LCD) is made up of employees of the county.
  - The key provision in Chapter 92 (s. 92.09 Wis. Stats.) allows LCD staff to carry out LCC powers and directives, and therefore, the LCD serves as its committee's right arm.
  - The LCD develops the strategic plan that implements LCC priorities: Land and Water Resource Management Plan (s. 92.10 Wis. Stats.)
- Regular People Who Love These  
Lakes



# Agriculture can do it!

## Pecatonica Watershed – Pilot Project



Test to see if standard practices could reduce phosphorus in a watershed

Farmers voluntarily provided field information for an inventory and stepped up to implement needed practices

Result:  
37% reduction in Phosphorus runoff

# Pontoons and Politics 2014





# Conservationists from 5 Co's



# Members of 5 LWCC







# The Wisconsin River Basin (WRB) Water Quality Improvement Project

---

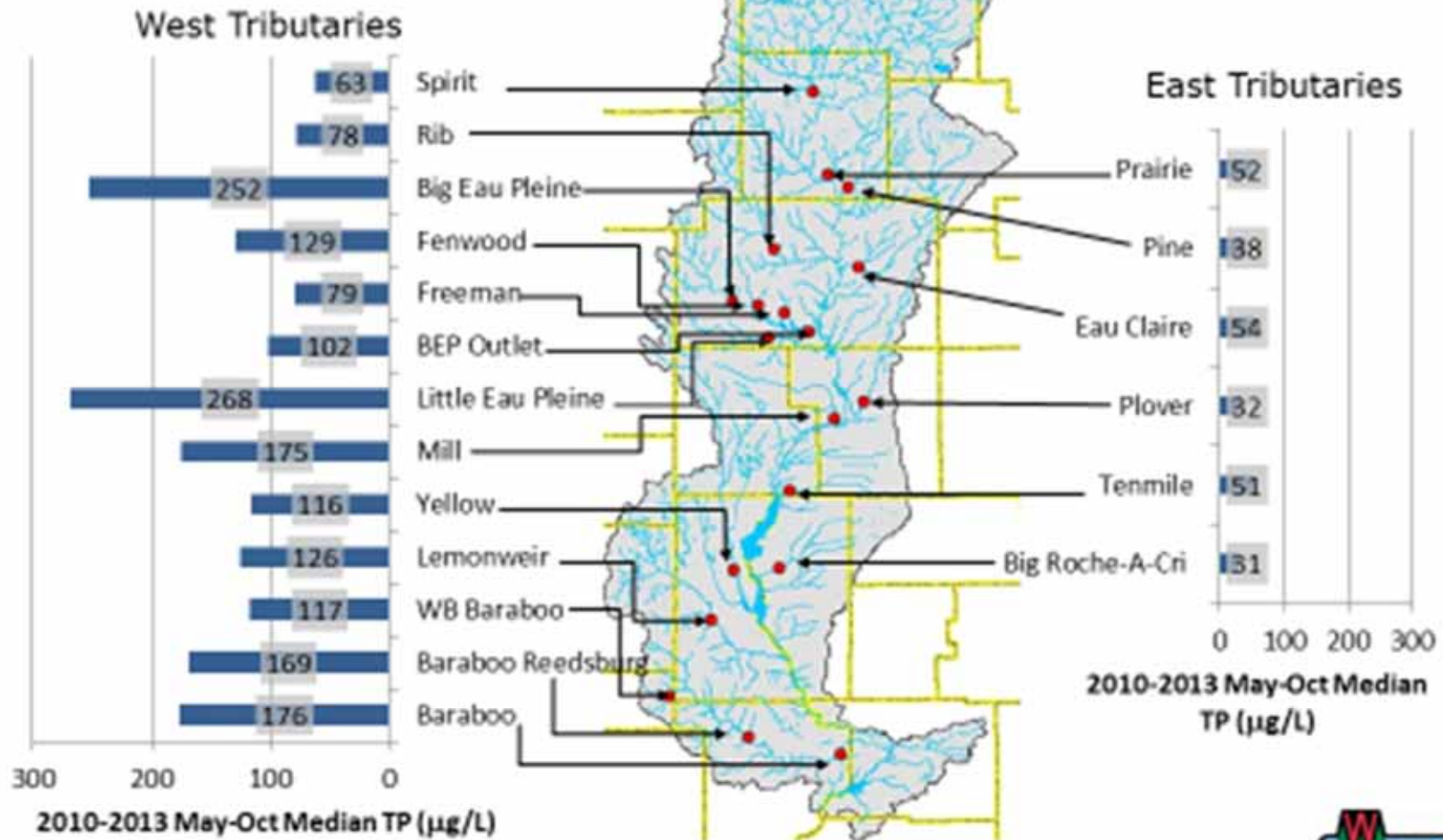


Regular People Who Love These  
Lakes



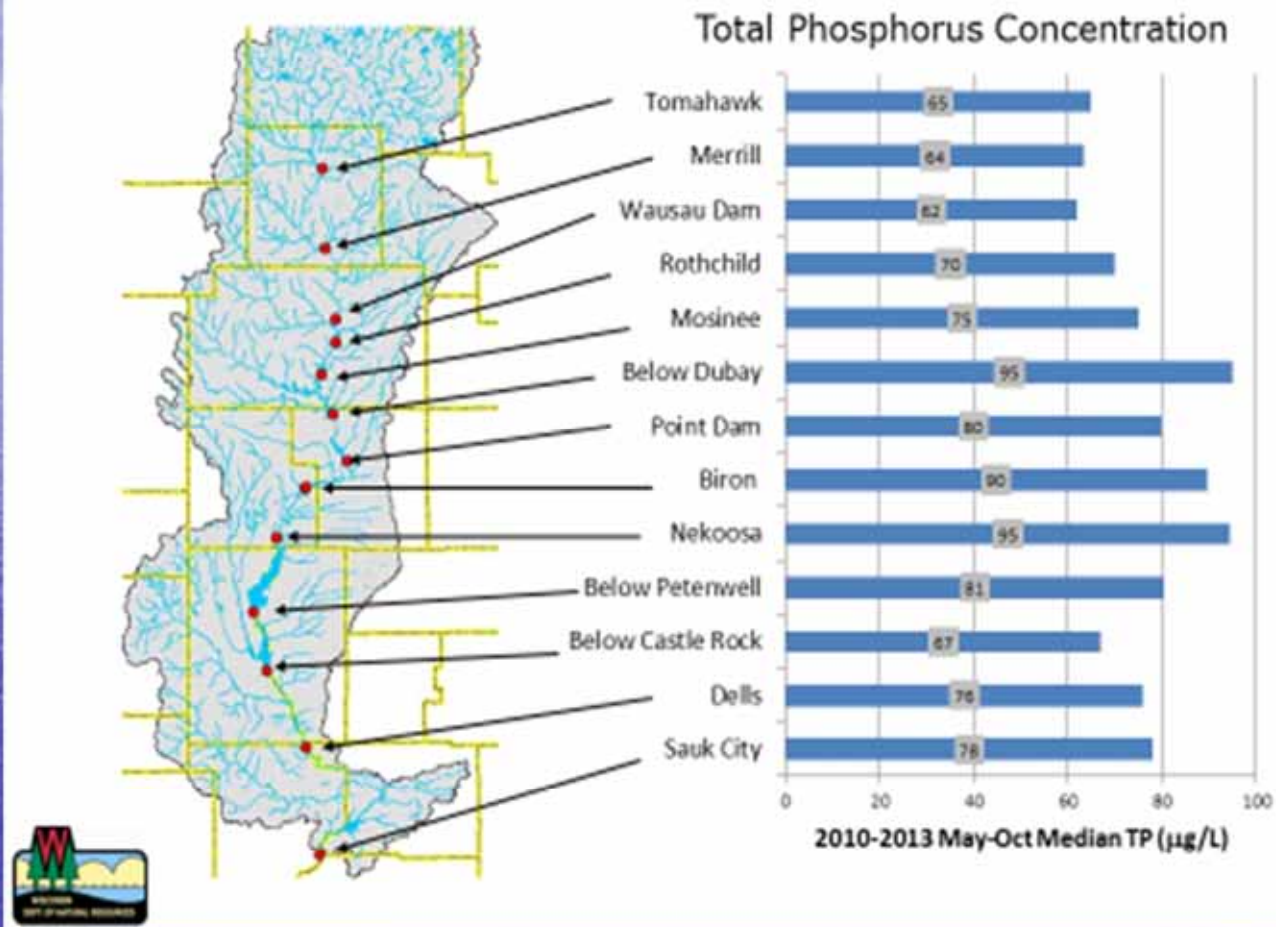
# Tributary Monitoring Results

## Total Phosphorus Concentration



Regular People Who Love These  
Lakes

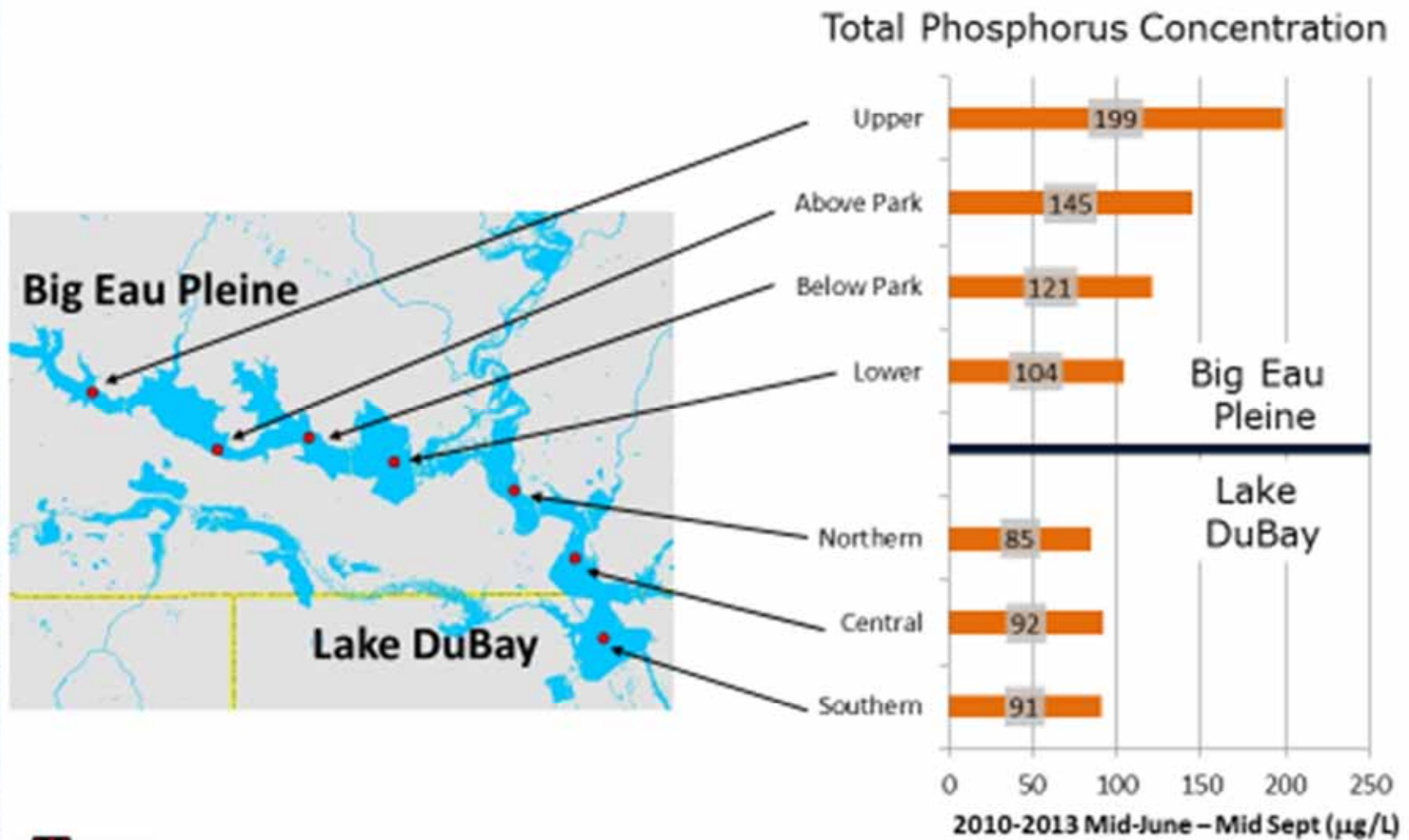
## Main Stem Monitoring Results



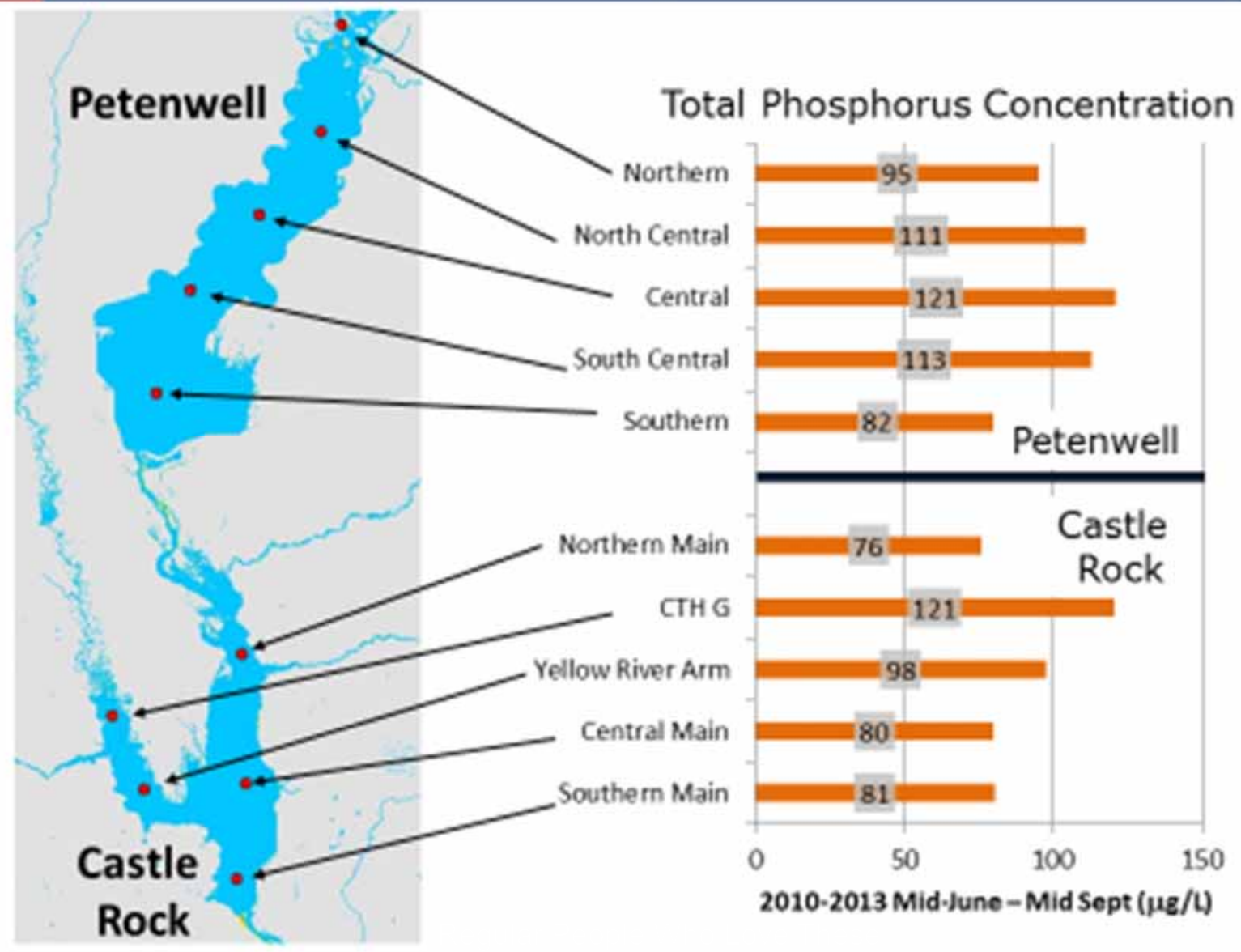
Regular People Who Love These  
Lakes



# Major Reservoir Monitoring Results



# Major Reservoir Monitoring Results

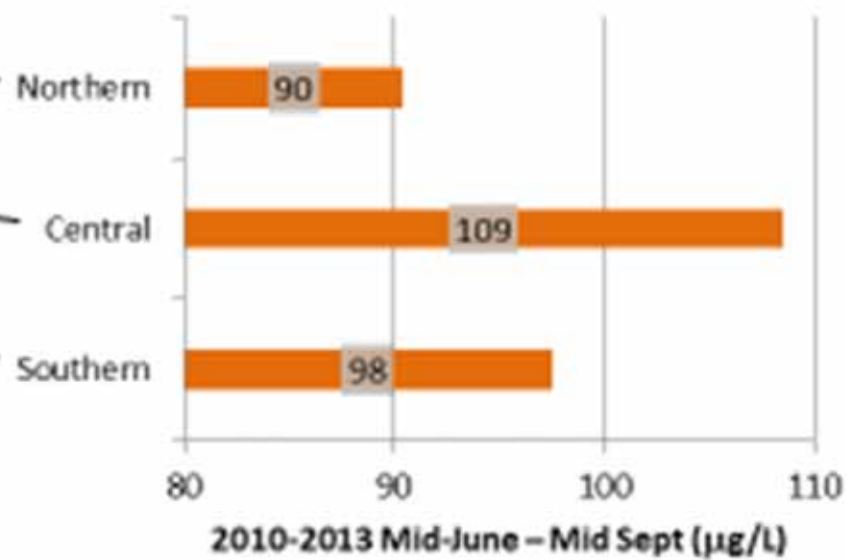




# Major Reservoir Monitoring Results



## Total Phosphorus Concentration



# Adams County Animal Waste Ordinance Advisory Group

3 individuals representing water quality

5 farmers

2 Co Health & UW Ext



# PACRS Reached out to:

- Wisconsin River Discharge Group
- Potato Growers Association
- Wisconsin River Industrial Discharge Group

# What a Treasure



Regular People Who Love These  
Lakes



# Citizens Working Together

Umbrella group of citizens  
To  
Cover entire length of river

Regular People Who Love These  
Lakes

# Team Work



- Link 9 citizen groups from Rhinelander to Lodi on the Wisconsin River

Regular People Who Love These  
Lakes



“Never doubt that a **small** group of **thoughtful, committed** citizens can change the world: indeed, it’s the only thing that ever has”

Margaret Mead



Regular People Who Love These  
Lakes

# Thank You

- PACRS Board of Directors

- President Rick Georgeson
- Vice President Scott Bordeau
- Secretary Colette Camerano
- Treasurer Steve Taylor
- Mike Coke Carol Lyman
- Gerry Ganther Ron Lyman
- Wayne Gjersvig Lynda Everson
- Carol Lyman Jim Murray
- Ron Lyman Chris Turok
- Virgil Miller Curt Frost

Regular People Who Love These  
Lakes



# Our Technical Advisors

- River Alliance of Wisconsin
- Wisconsin DNR
- LWCD Staff Adams Co & Juneau Co
- USCOE
- NOAA
- UWSP
- UWEX



Regular People Who Love These  
Lakes

# A New Day / New Efforts



Regular People Who Love These  
Lakes



# Working for the next generation



Regular People Who Love These  
Lakes



Regular People Who Love These  
Lakes