

Emily Stanley

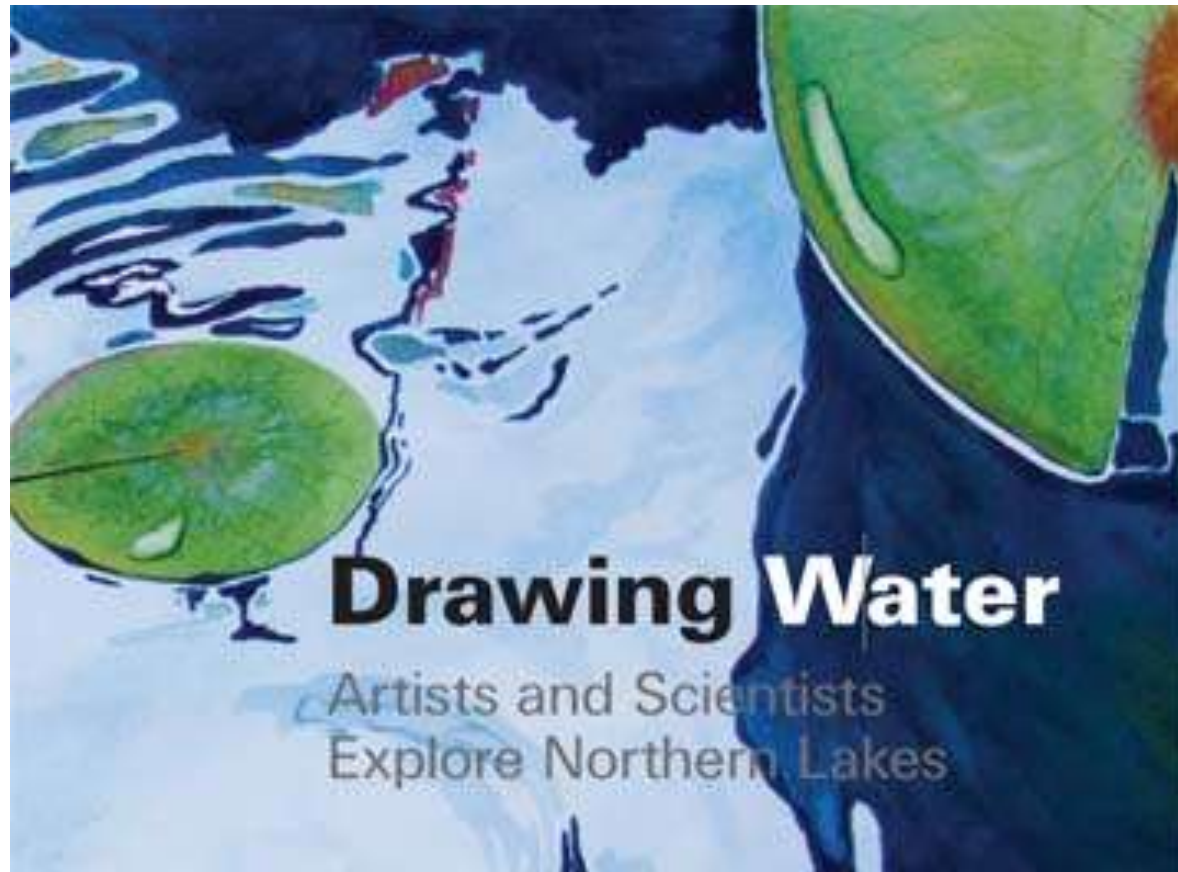
Professor for
Zoology and Center
for Limnology
UW-Madison



WISCONSIN



From the science side



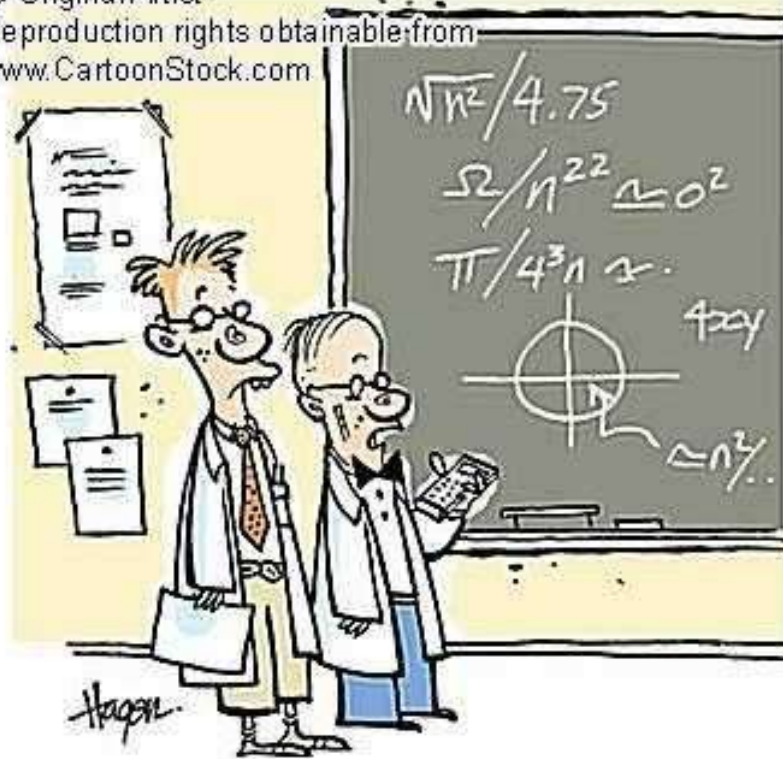
<http://lter.limnology.wisc.edu/ltearts/>



“The Scientist”



© Original Artist
Reproduction rights obtainable from
www.CartoonStock.com



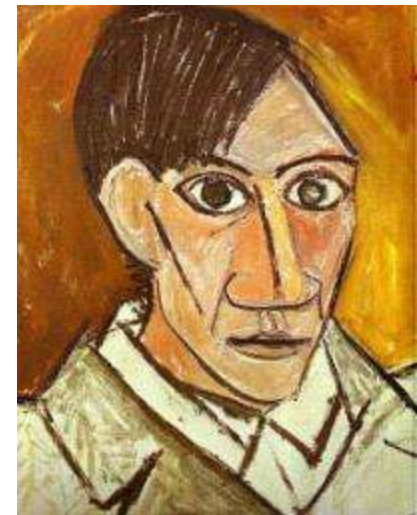
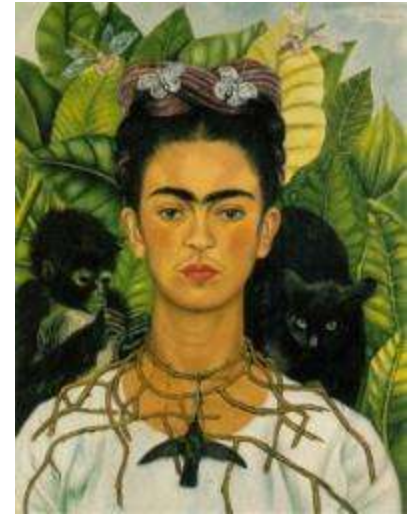
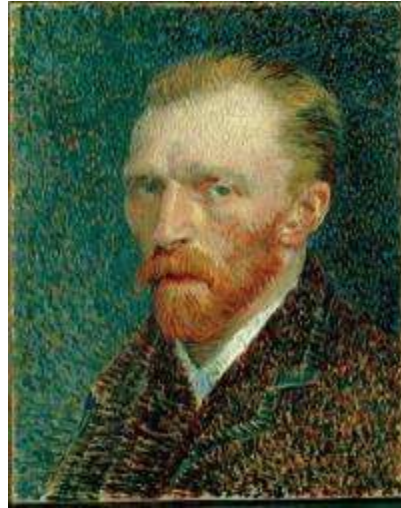
search ID: rhan448

I'M AFRAID THE NUMBERS DON'T LIE NORTON,
WE'RE DEFINITELY NERDS.



Media.gunaxin.com

Artists



“The Scientist”

- The scientific method
 - Observation, question
 - Equal consideration to multiple alternative explanations
 - Testable, reproducible and thus reliable
- Objectivity and credibility
 - “objective arbiters of the truth”

“The Scientist”

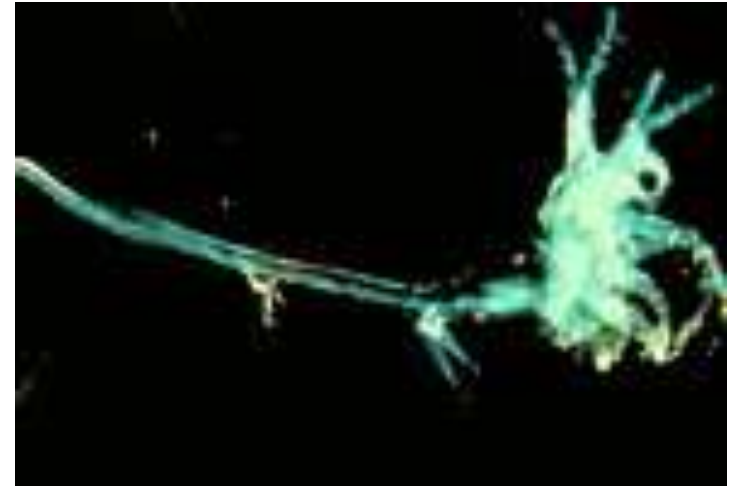
- The Objectivity Principle
 - Standing back decreases emotion and increases logic (changingminds.org)



Drawn to water...

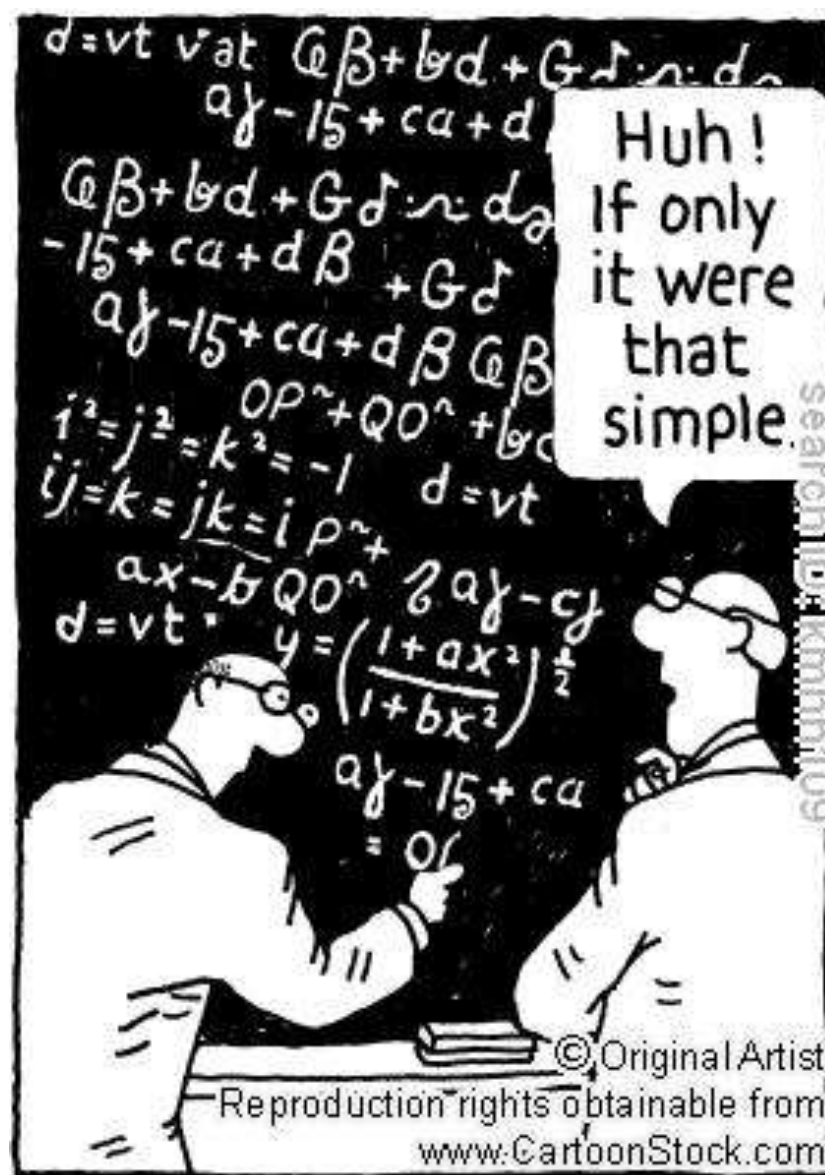


Objectivity is most needed and most challenged...

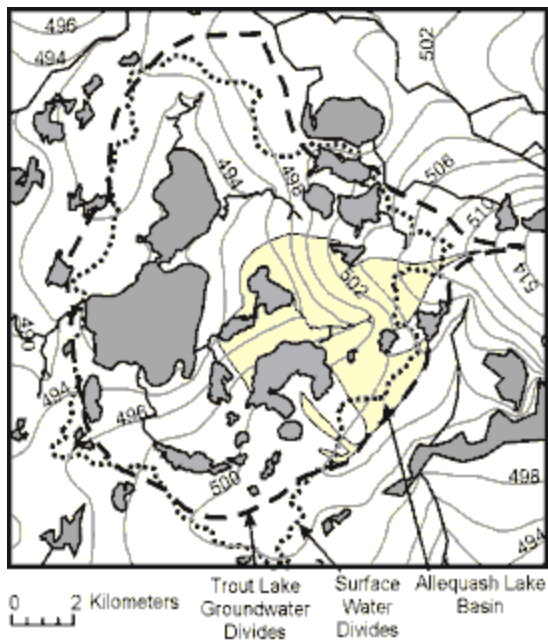




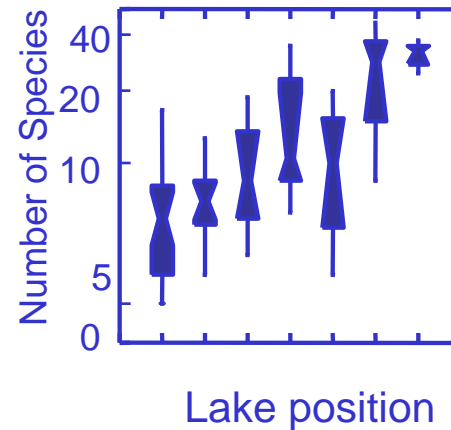
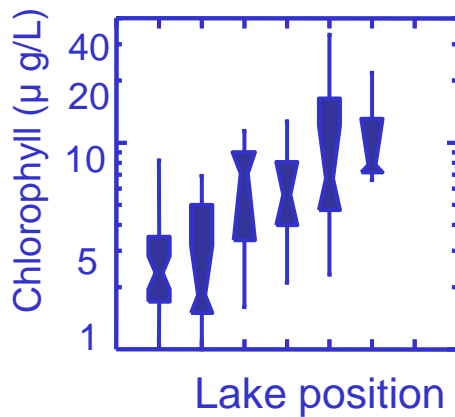
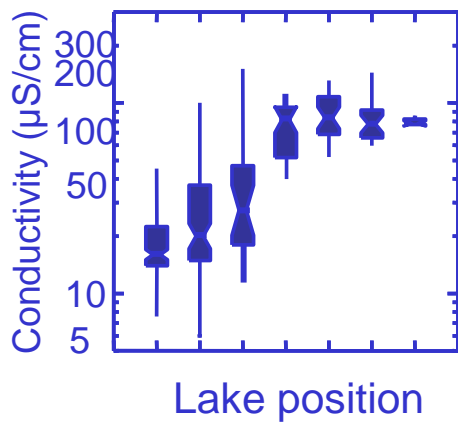
?



Lake position

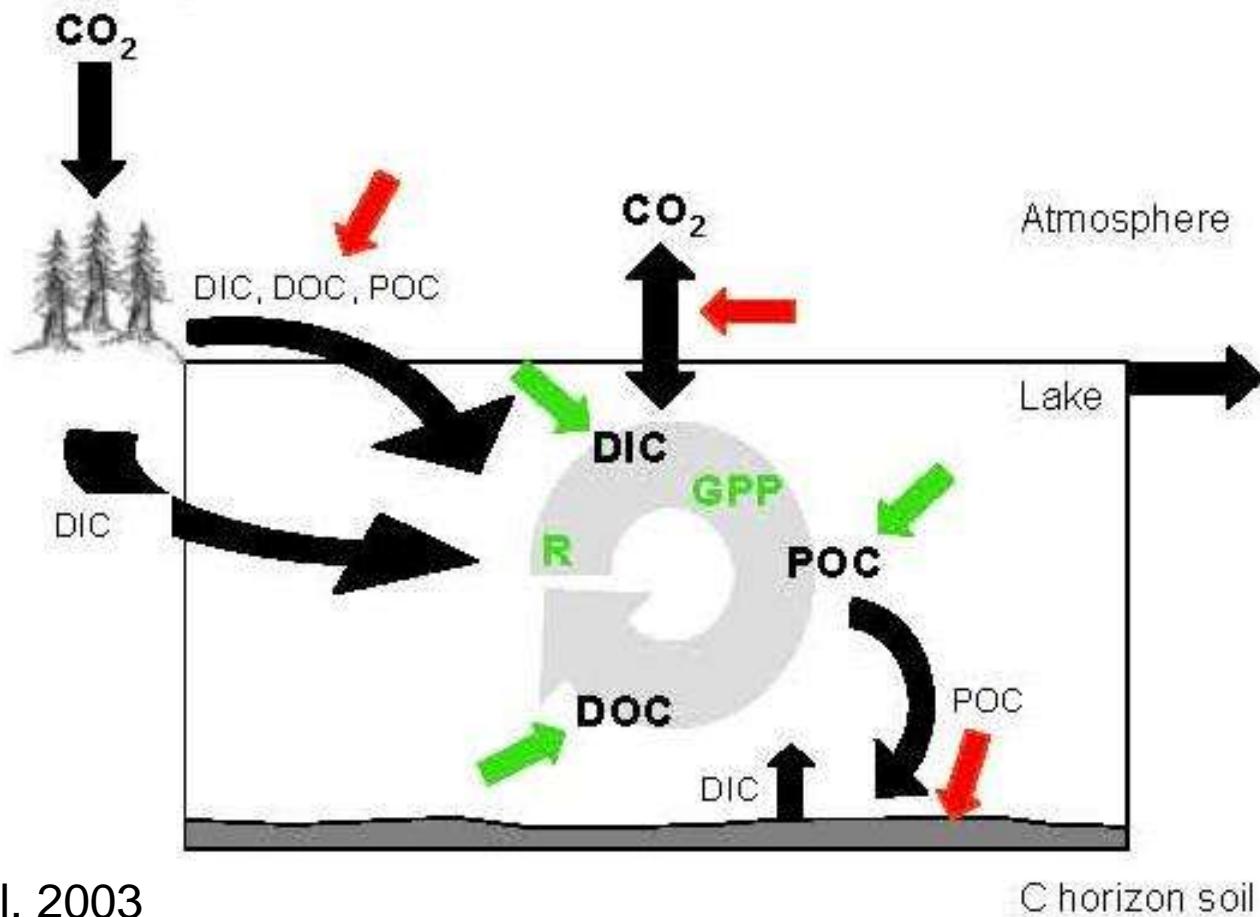


From: R. J. Hunt



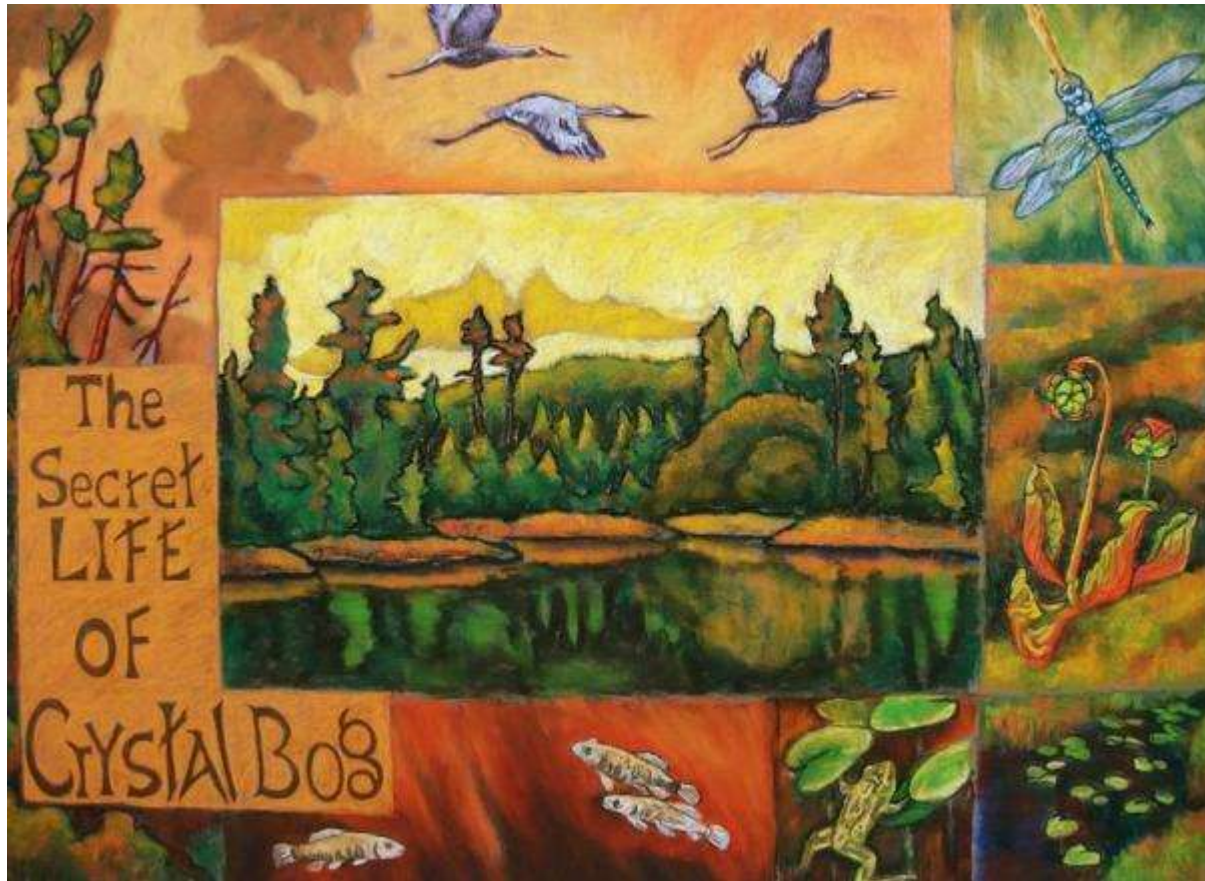
Lake Position





Hanson et al. 2003

C horizon soil



Terry Daulton



Artists and Scientists exploring the lakes, 2010

