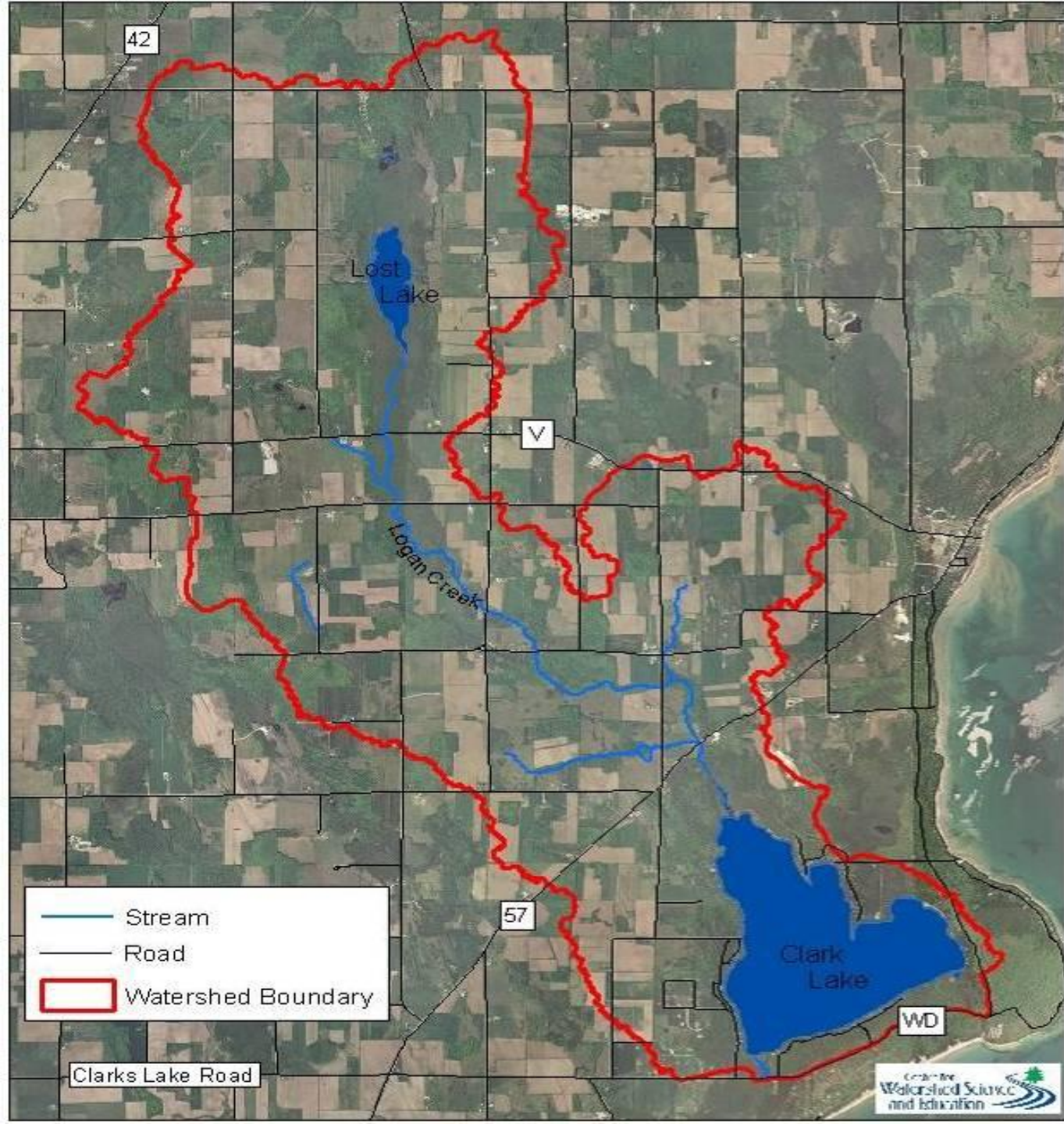


CLARK LAKE WATERSHED
STUDY
“BUILDING PARTNERSHIPS TO
ACHIEVE PROTECTION
GOALS”

MARCH, 2010







“Our Lake Association”

- The CLAA is a Wisconsin corporation organized under s.s. 181 and is a 501C3 organization. Member of Wisconsin Lakes.
- Represents about 85% of the 263 properties on or within 3/8 mile of the shoreline of Clark Lake
- Formed over 40 years ago as a non-profit organization to serve as an association of property owners and other persons interested in the progress, development, and welfare of Clark Lake and nearby contiguous land areas.
- forming partnerships with other Door County lakes to share issues and successful solutions.
- Use website **<http://www.clarklakewi.com>** to keep members and other stakeholders up to speed on local and state lake issues.

Clark Lake – Case Study

“Know the Current Situation”

- It's important to “take the temperature” of lake residents and other stakeholders.
- For example, the Clark Lake Advancement Association (CLAA) surveyed lake residents and others in 2002.
- Survey asked 12 questions, covering a broad scope of issues. We achieved better than 60% response rate in the following areas:
 - Natural quality of lake (water quality, clarity, more)
 - Water quality monitoring
 - Quality of fishing
 - Areas of lake and watershed for potential protection
 - Personal uses of lake
 - Types of boats used
 - Aquatic safety measures adequate
 - Adequate aquatic and surrounding area law enforcement, fire protection
- CLAA published follow-up survey in 2009 to seek feedback on outcomes of study and to “take the temperature” of lake residents and other lake users.

Clark Lake – Case Study

- Based on input from 2002 survey, CLAA Directors, with input from other stakeholders, developed a Plan to research key issues such as water quality, boating in shallow waters, loss of bulrushes, watershed management, and more.
- Plan had specific actions, goals, schedule and measures of success.
- Plan included clear communication of watershed initiatives and was instrumental in linking actions with lake user survey results.
- In response to Plan (to document current conditions and threats CLAA initiated a watershed study (2005-2007).

“Develop Constructive Relationships And Partnerships”

- No one lake organization can “do it alone”, as issues are complex, and solutions impact more than lake residents and lake organizations.
- Science input to the project provided by Science Advisory Committee, made up of scientists from DNR (retired), local high school teacher, Door County Soil & Water, Kangaroo Lake Association, The Nature Conservancy, and CLAA members.
- Local conservation organization (Ridges Sanctuary - who owns land on the lake) volunteered to act as the Project Sponsor. Without that partnership, the study could not have progressed.
- Science Committee active through the study and instrumental in reviewing preliminary findings and recommendations. Without the input and assistance of the Science Committee and partnerships, the study would not have moved forward.
- Recruited director with financial experience to manage financial aspects of project (6 lake planning grants).






“Inclusive versus Exclusive”

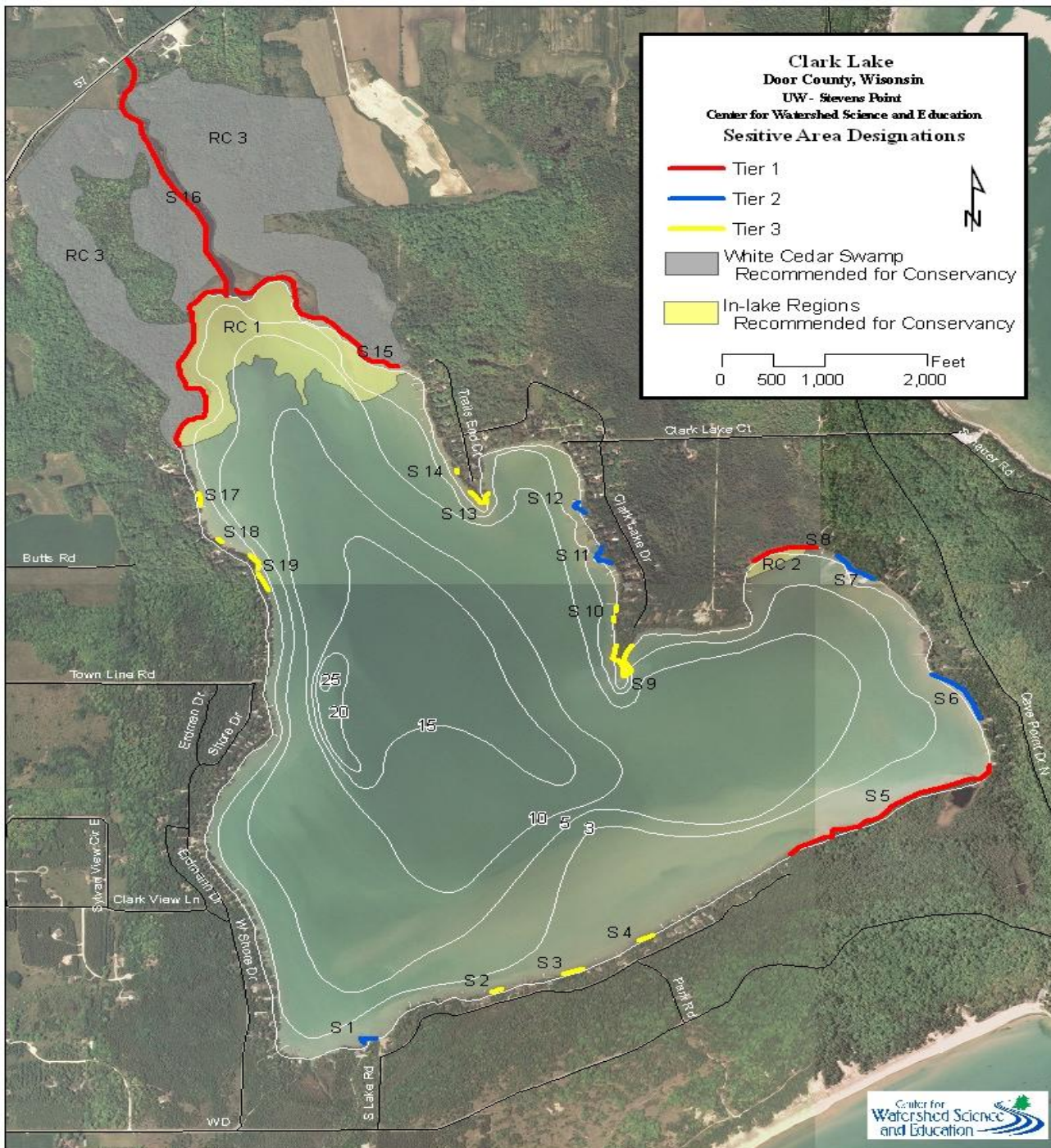
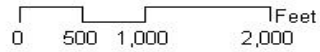
- Solicit input from a broad group of stakeholders when taking actions that impact lake use or otherwise have broad community interest.
- For example, a Watershed Management Planning Committee was created to represent stakeholders from the watershed and other lake users, which consisted of a mix of folks from:
 - Clark Lake (7),
 - Lost Lake (2),
 - DNR and Door County Soil & Water (2),
 - representatives from the Jacksonport and Sevastopol town boards(2),
 - A representative from Trout Unlimited,
 - and other local stakeholders (farmer, business owner, fisherman,3).
- Recommendations from the Planning Committee were shared with the local community at presentations at Town Board meetings and at general presentations.

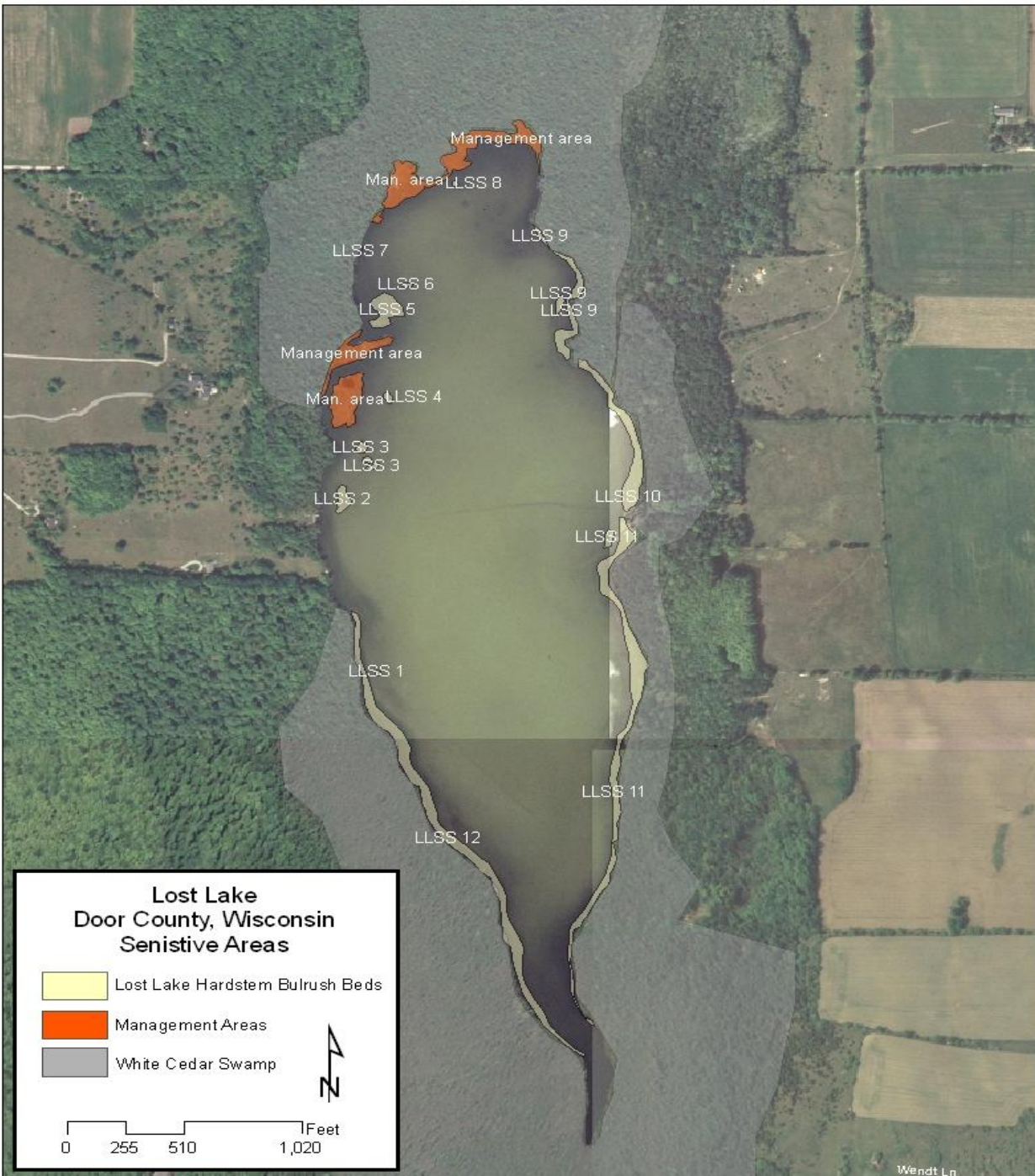
OUTCOMES: “LINKING POLICY TO SCIENCE”

- The recommendations from the watershed Planning Committee were prioritized and approved by the CLAA Board, and subsequently ratified by CLAA membership.
- High priority actions focused on protection of biologically important areas (critical habitat areas) to lake and watershed.
- UWSP recommended critical habitat areas based on plant surveys and inspection of areas.
- DNR reviewed recommendations through independent survey, and confirmed majority of recommendations.
- CLAA board supported critical habitat designation - joint CLAA/DNR letter to landowners with areas designated as critical habitat.

Clark Lake
Door County, Wisconsin
UW - Stevens Point
Center for Watershed Science and Education
Sensitive Area Designations

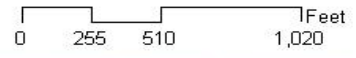
-  Tier 1
-  Tier 2
-  Tier 3
-  White Cedar Swamp
Recommended for Conservancy
-  In-lake Regions
Recommended for Conservancy





**Lost Lake
Door County, Wisconsin
Sensitive Areas**

- Lost Lake Hardstem Bulrush Beds
- Management Areas
- White Cedar Swamp



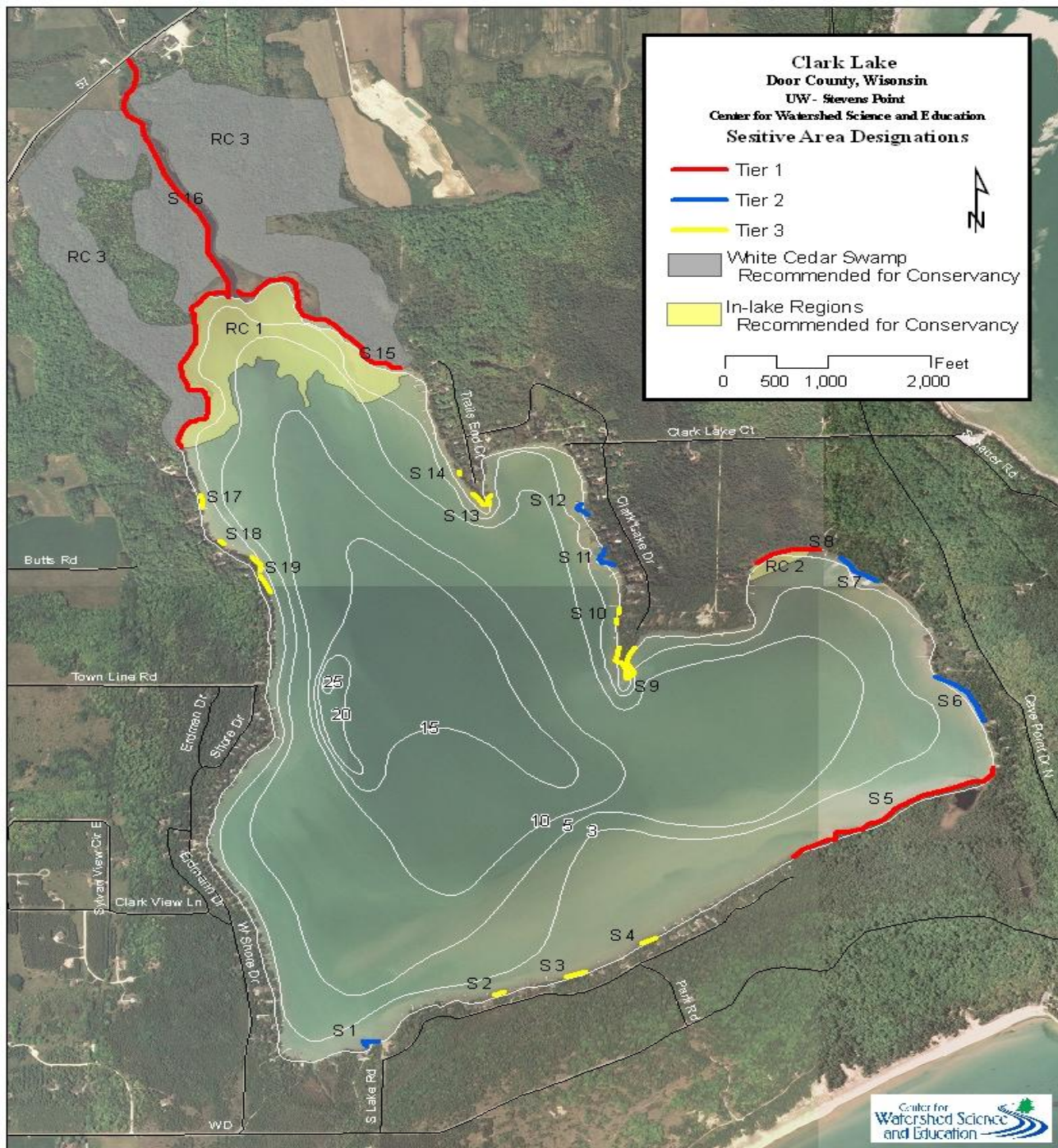
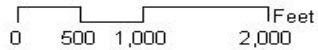
Wendt Ln

OUTCOMES, continued

- Next area of focus was to protect existing bullrush beds and biologically diverse areas from high-speed boat traffic, to allow regeneration of bulrushes and protect rooted macrophytes from boat damage.
- High priority protection areas in east bay were identified using UWSP and DNR surveys, and knowledge of boat traffic. CLAA started process of requesting slow-no-wake zone designation for two areas in east bay.
- Local riparian owners unanimously supported designation – some opposition from “its ok” community.
- Ordinance request was approved (long journey) by both town boards and subsequently DNR. Signs were placed to identify area, and areas were buoyed for slow-no-wake enforcement.

Clark Lake
Door County, Wisconsin
UW - Stevens Point
Center for Watershed Science and Education
Sensitive Area Designations

- Tier 1
- Tier 2
- Tier 3
- White Cedar Swamp
Recommended for Conservancy
- In-lake Regions
Recommended for Conservancy



OUTCOMES, continued

- Final area of focus was to protect existing bullrush beds and biologically diverse areas from all motorized boat traffic, to allow regeneration of bulrushes and protect rooted macrophytes from boat damage.
- High priority protection areas included north end of Clark Lake and Logan Creek to Highway 57. Areas were prioritized by UWSP, DNR and watershed science advisory committee. CLAA started process of requesting **no-motor** designation for contiguous area.
- Majority of riparian owners supported designation – some opposition from “its ok” community, including one riparian owner along Logan Creek.
- Representatives from science advisory committee provided basis for protection at hearings.
- Ordinance request approved (very long journey) by Jacksonport Town Board and subsequently DNR. Signs placed to identify area, and areas buoyed for slow-no-wake enforcement.

