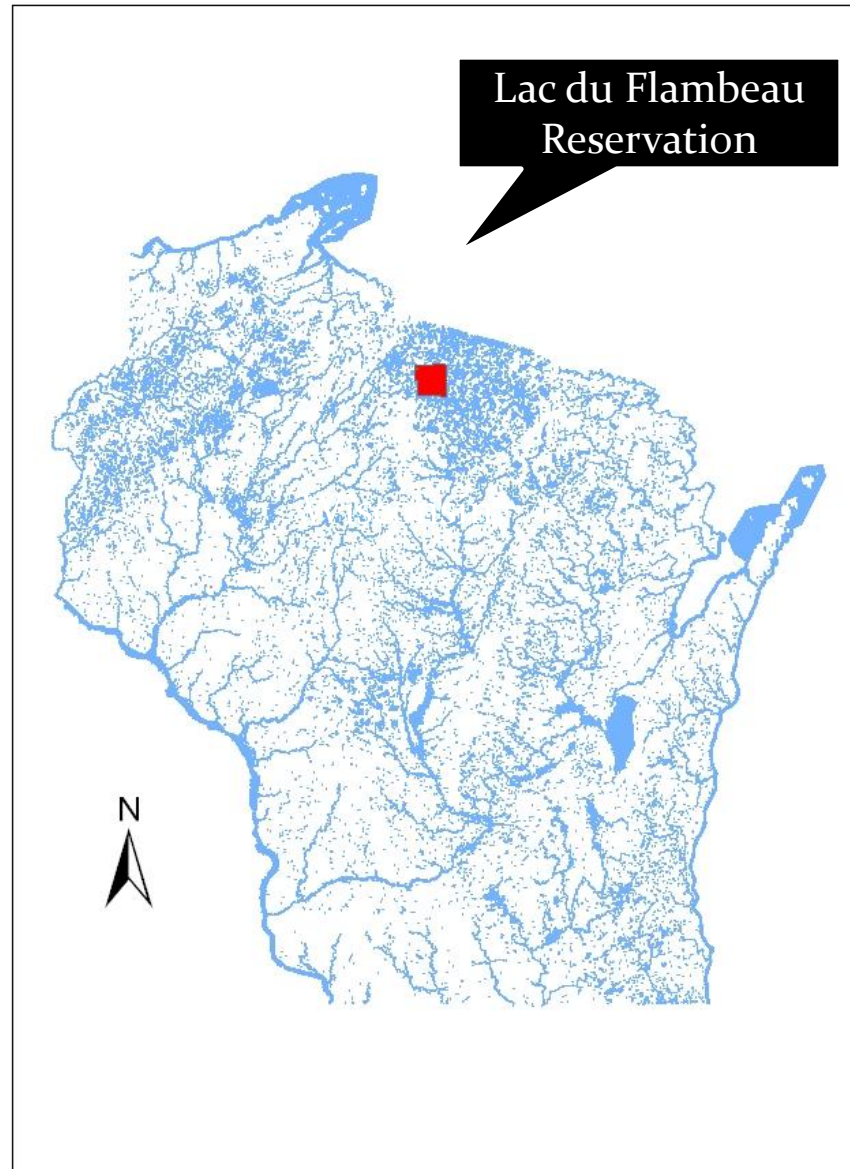


Lake Fairs Engaging the Public

A Look at the Lac du Flambeau Tribe's
Annual Lakesfest presented by Brian Gauthier LDF
UWEX and Bryan Hoover LDF Tribal Natural
Resources



Where are we?



Lakesfest History

- Early to mid-90's lake fairs were in style.
- The Tribal Natural Resource program and Tribal Extension program participated in regional lake fairs.
- But something was missing:
- Background on Lac du Flambeau.

Lac du Flambeau

- Tribal reservation and a township.
- Checkerboard reservation.
- Three types of land categories:
 - Tribal trust lands
 - Allotted lands
 - Fee or taxable lands
 - Second home owners

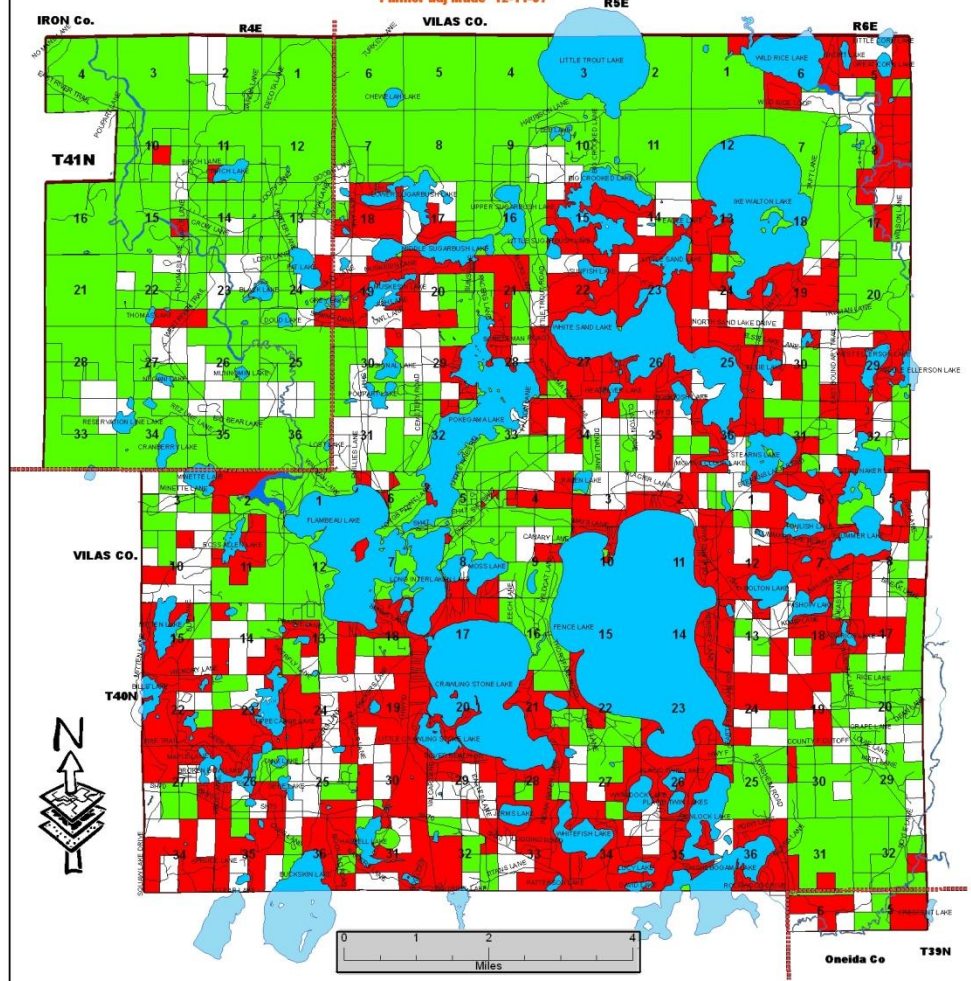


Lac du Flambeau Reservation landownership



May 3, 2007

2 minor adj made 11-27-07
1 minor adj made 12-11-07



Legend
ownership

- Allotted land
- Fee Land
- Tribal land

Reservation Acreage=		86,548	100%
Allotted lands=		12,859	15%
Fee Lands=		22,391	26%
Tribal Lands=		33,770	39%
259 Lakes =		15,221	18%
Rivers & larger streams=		2,307	2%

Notice

The map is created using the information from records of the fee, fee lands were not able to be included into the map. Also, the map is not a representation of the actual land ownership of the date. The mapping center offers best services.

Map prepared by Lac du Flambeau Reservation
Lac du Flambeau Reservation
2007
Map scale: 1:50,000
Map projection: UTM
Map datum: NAD 83
Map coordinate system: UTM
Map scale: 1:50,000

Demographics

- Population- 3004
- Tribal membership on reservation- 1800
- Total membership- 3400
- Unemployment- 30%
- Median income- \$30,349
- Households below poverty- 149

Local Governments

- Lac du Flambeau Tribal Council
- Lac du Flambeau Town Board
- Vilas County Board

Natural Resources

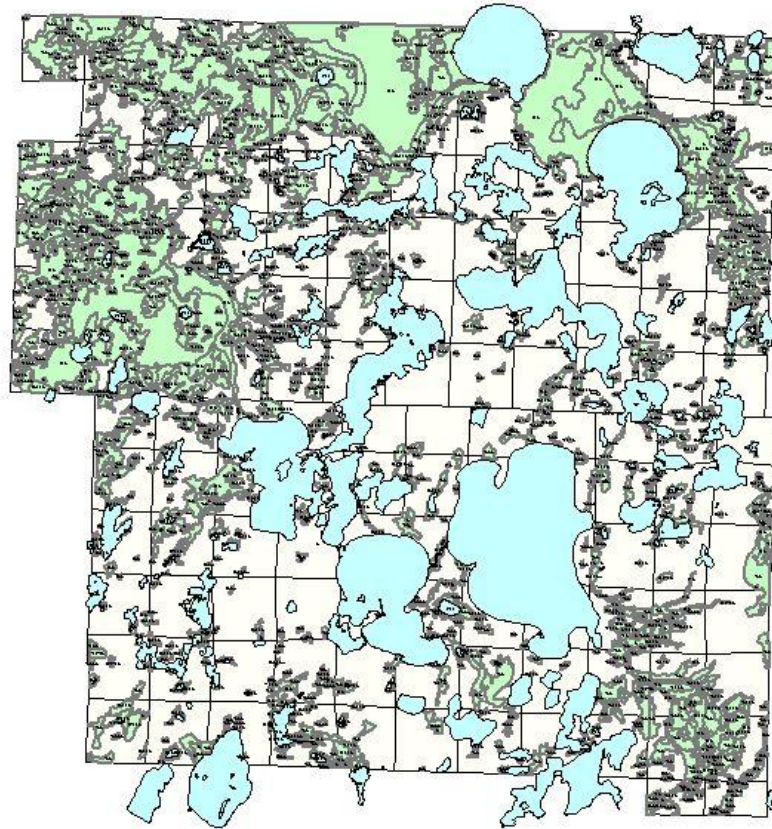
- Checkerboard Reservation
- 86,600 acres
- 67% tribal lands and 33% fee or private lands
- 260 lakes with 18,000 acres of surface water
- 71 miles of river and creeks
- 24,000 acres of wetlands



Aerial Photo of the Reservation



49% of the Reservation is Wet Lakes, Rivers and Wetlands



Lac du Flambeau Tribal Natural Resource Department

- Fish and Game
- Forestry
- Water Resources
- Environmental Protection
- Energy
- Conservation Law

Goals of the Tribal Natural Resource Department

- Protect
- Conserve
- Enhance

Tribal Natural Resources for present and future generations of all people living on the reservation by utilizing the Bands IRMP and Natural Resource Programs.

LDF Reservation Land Use Districts



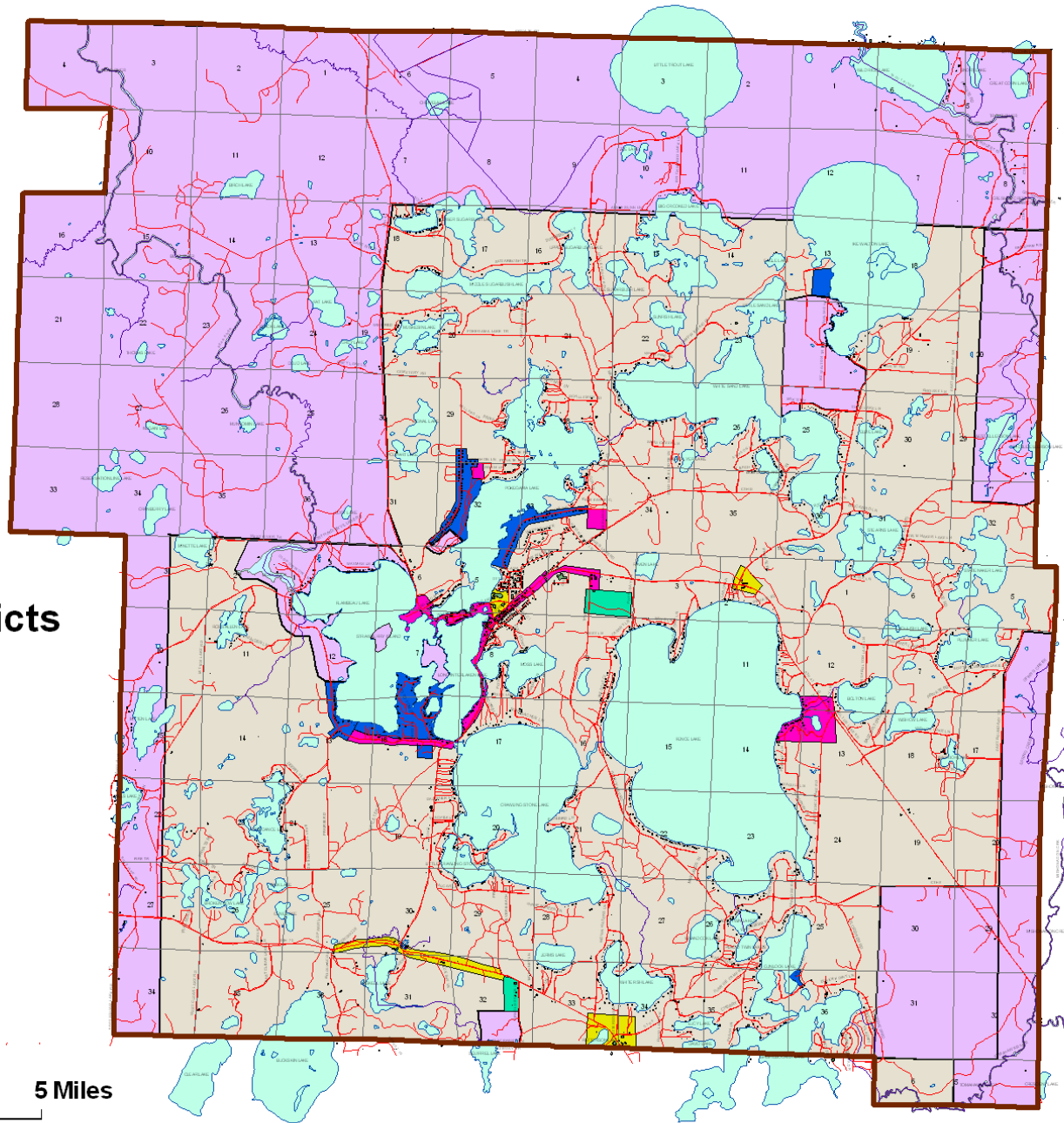
Tribal Land Use Districts

Land Use Districts

- | | |
|------------------------------------------------------------------------------------|-------------------------|
|  | Residential, single fam |
|  | Mixed use |
|  | Industrial |
|  | Business |
|  | Special Purpose |

Revision dates
7/26/2004-draft
8/4/04-draft
8/7/06-finished

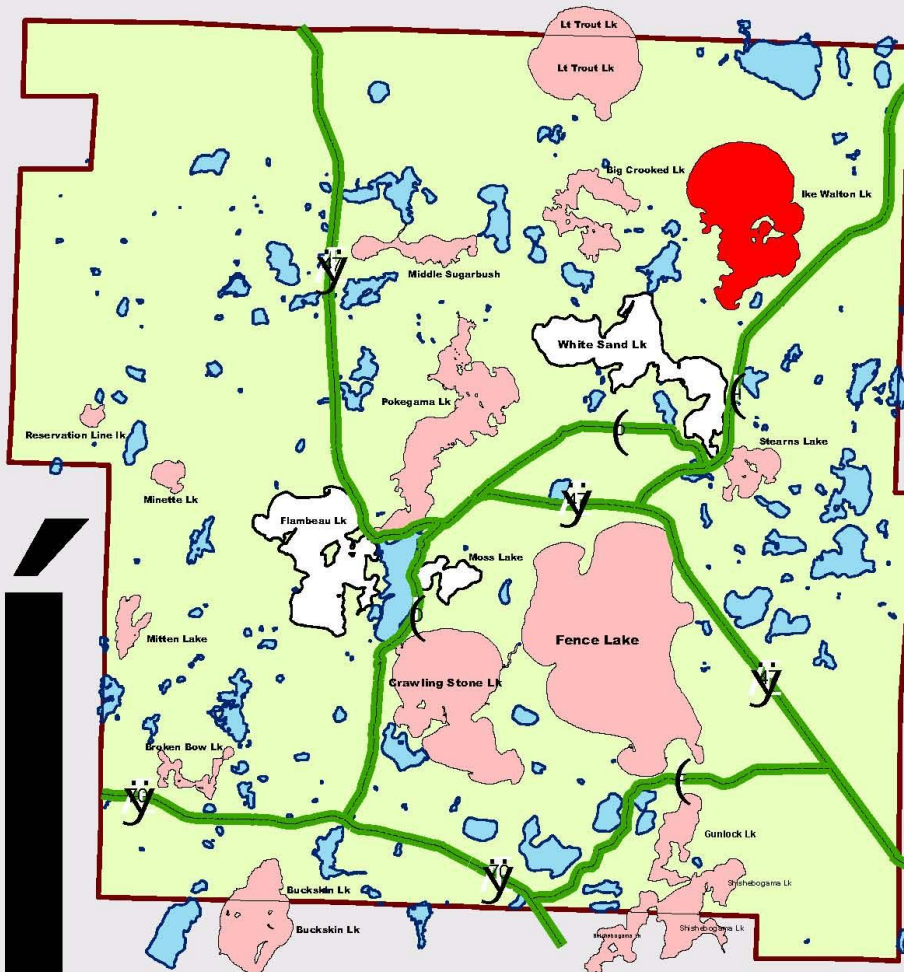
0 1.25 2.5 5 Miles



Climate Change



Lac du Flambeau Mercury Advisory



Safe Eating Guidelines (Mercury) –

for most of Lac du Flambeau Walleye Lakes

All fish contain some mercury. Large fish, especially walleye contain more mercury than small fish, like perch. In some lakes and rivers, mercury bioaccumulates to higher levels in fish.

This map contains special advice for fish that have been found to contain mercury at higher levels. Women of childbearing age who intend on becoming pregnant and children under 15 should be especially careful to follow the guidance.

Women of Childbearing Years, Nursing Mothers, and all Children under 15 Should Follow this Map for Walleye over 18 Inches Long:

- Do Not Eat Walleye from Lakes Labeled – Red
- Do Not Eat More Than One Walleye a Month from Lakes Labeled – Pink
- Do Not Eat More Than One Walleye a Week from Lakes Labeled – White
- Lakes have not been analyzed for mercury content – Blue

Men and Women beyond their childbearing years should eat no more than one Walleye over 18 inches long per week

For more detailed fish consumption advice please review the information on the back of this map

V.H.S.



A.I.S.



Shoreline Development



Shoreline Development



Water Quality Standard Differences

- Tribal Government

- Fishable

- Swim able

- Eatable

- State Government

- Fishable

- Swim able

That Something Missing

● Culture

- Connection to Mother Earth
- Seventh Generation
- Holistic approach
- Everyone's lakes
- Two worlds

Development of the Lac du Flambeau Annual Lakesfest

- Planning started in 1996.
- Collaborative planning between Tribal Natural Resource Program and the Tribal Extension Program.
- A working committee was established.
- Intent was to run one year.

Approach

- To make the event open to the public.
- To make the event educational.
- To focus on all natural resource issues.
- To make it fun.

Planning Committee

- Sub-committees
 - Begging committee
 - Public Relations committee
 - Site prep committee
 - Raffle committee
 - Games committee
 - Fund raising committee
 - Award nomination committee

Budget

- Tribal General Fund
- Grant Funds
- Donations
- Raffle ticket sales
- Total - \$6,200.00

View of Long Lake



Signage



Major Raffle Prize



Silent Sports Raffle



Silent Sport Raffle



1. 1. 1997

Kids Canoe Race



Adult Canoe Race



Spectators at Canoe Race



Local Band



Kids Games



Kids Activities



Displays



Family Fun



Outside Agencies

- Great Lakes Indian Fish and Wildlife Commission
- Environmental Protection Agency
- Bureau of Indian Affairs
- Lake Associations
- Indian Health Service
- National Park Service
- Basin Educators
- Natural Resource and Conservation Service
- U.S. Forest Service
- U.S. Fish and Wildlife Service
- Wisconsin DNR
- U.W.E.X.
- Local Governments
- U.W. Campus Programs
- Focus on Energy

Local Participation

- There are fifteen local programs involved in the event.
- There are anywhere from five to six non-profits involved.
- There are private vendors involved that fit the theme.

Accomplishments Through the Years

- 14 years and still going.
- 500 people the lowest with 1500 the highest.
- Because people turn out Lakesfest continues.
- General outcomes.

Education/ Outreach



Partners



Public Education and Outreach Benefit: Credibility



Shoreline Restoration





7.11.2000

Environmental Community Organization

- Roll up your sleeves group focusing in on environmental issues.
- Tribal and Non-tribal individuals.
- Building a bridge between two cultures focusing on mother earth.

Keys to Success

- Proactive.
- Promotes community involvement.
- Casual environment leads to collaboration.
- Consistent date.
- Close out meeting.
- Free food.
- Keep it fun!

14th Annual Lac du Flambeau

Lakes Fest

2010

Saturday, June 26th Downtown Lac du Flambeau
10 a.m. to 3 p.m.

Kids Games Canoe Races Music

Environmental Education Booths

Free Hot Dogs and Soda

Raffle Prizes

2 Kayaks with a Peck-A-Boo Bottom, Green Bay Packer Weekend,
a Grill plus Accessories and Family Size Picnic Tables and Children's



For more information please contact:

The Lac du Flambeau Chamber at 715-588-3346

LDF Tribal Natural Resources Department at 715-588-4213

Diane at 715-588-4254 or E-mail: d.bridgeforth@hotmail.com