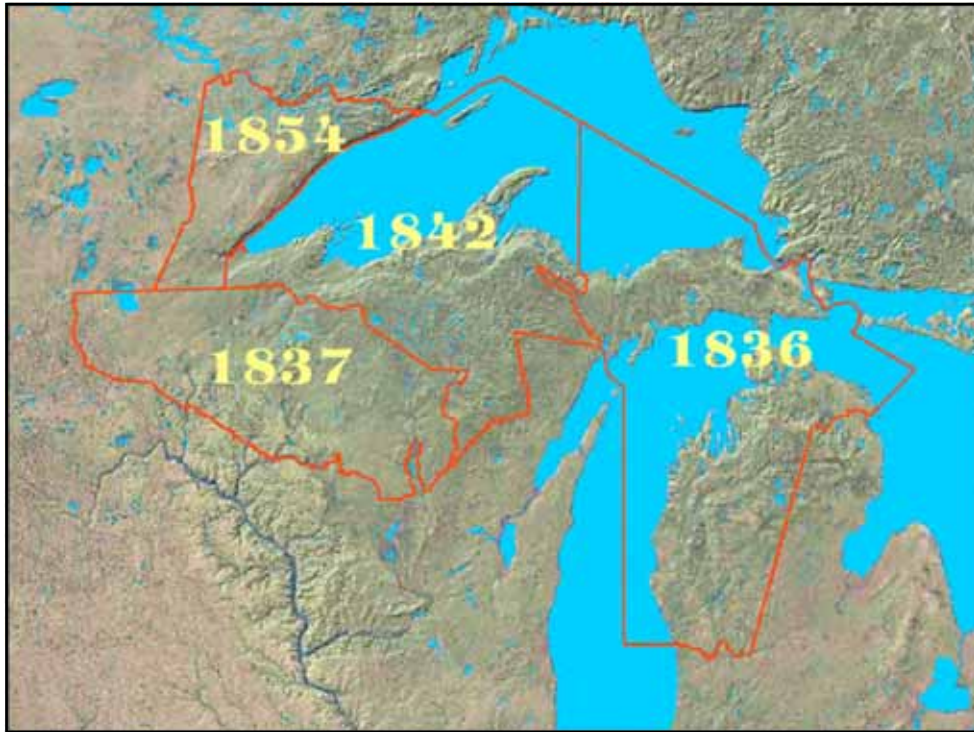




Comprehensive program

-TIS

-Focus on AIS/ cooperative efforts



11 member tribes

Off-rez



Tribal perspective > land managers



AIS





treaty resources impacted by AIS:

- Fishery
- Waterfowl
- Wild rice
- Cranberries
- Other foods and medicines

## *Program Overview*

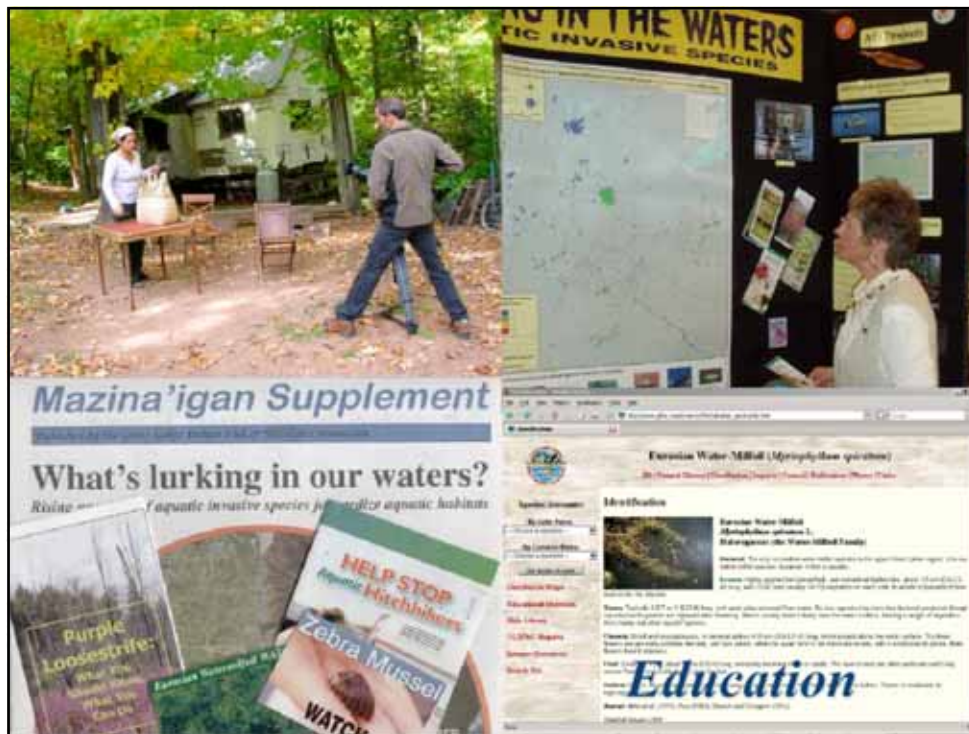


- *Education/Outreach*
- *Inventory/Monitoring*
- *Control*
- *Evaluation/Research*

*Coordinated  
With  
Cooperating  
Agencies*

Program overview

- Education
- Inventory
- Control
- Eval/research
- Coop/coord



- Ed outreach media
- Dis wis – video
- Mazina'igan newsletter
- Brochures/id cards
- Info booths
- website

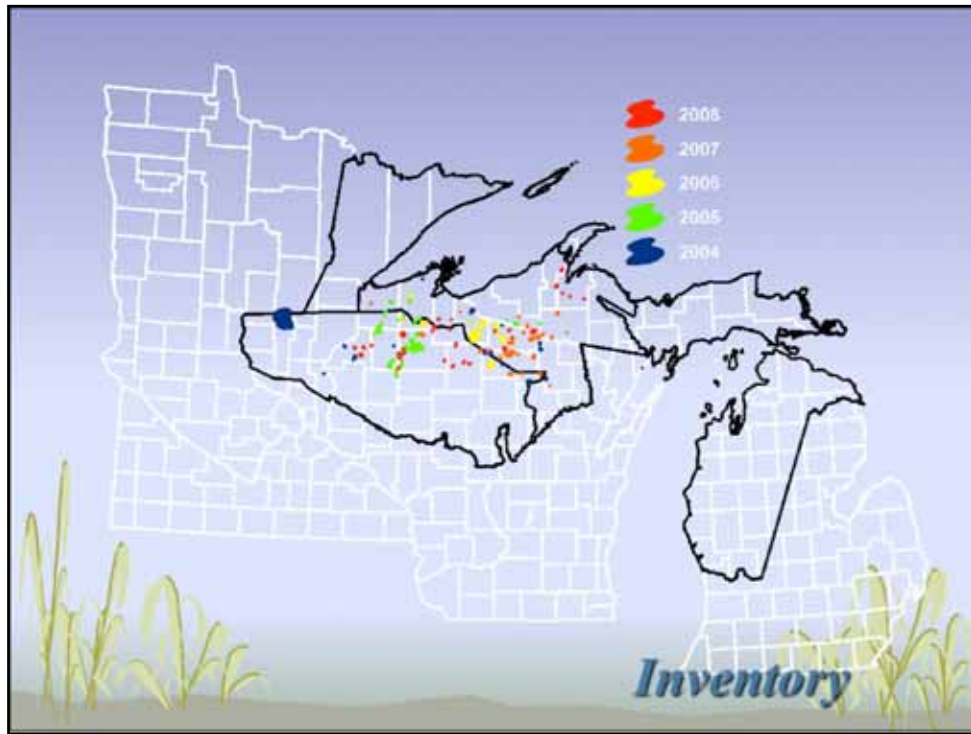


Signs avail for private landings





staff



Lakes inventoried 2004-2008

-- 30/yr

-Prioritize by tribal harvest, lake visitation rates

| Scientific Name                     | Common Name                     | Sites      |
|-------------------------------------|---------------------------------|------------|
| <i>Lythrum salicaria</i>            | purple loosestrife              | 324        |
| <i>Iris pseudacorus</i>             | yellow iris                     | 123        |
| <i>Cipangopaludina chinensis</i>    | Chinese mysterysnail            | 93         |
| <i>Viviparus georgianus</i>         | banded mysterysnail             | 46         |
| <i>Salix spp.</i>                   | crack, white and hybrid willows | 18         |
| <i>Typha spp.</i>                   | narrowleaf and hybrid cattail   | 17         |
| <i>Potamogeton crispus</i>          | curly leaf pondweed             | 16         |
| <i>Myosotis scorpioides</i>         | common forget me not            | 15         |
| <i>Solanum dulcamara</i>            | nightshade                      | 13         |
| <i>Cirsium palustre</i>             | marsh thistle                   | 9          |
| <i>Mentha spp.</i>                  | Eurasian mints                  | 9          |
| <i>Myriophyllum spicatum</i>        | Eurasian watermilfoil           | 7          |
| <i>Valeriana officinalis</i>        | garden valerian                 | 3          |
| <i>Convallaria majalis</i>          | European lily of the valley     | 2          |
| <i>Butomus umbellatus</i>           | flowering rush                  | 1          |
| <i>Glyceria maxima</i>              | reed manna grass                | 1          |
| <i>Polygonum cuspidatum</i>         | Japanese knotweed               | 1          |
| <i>Rorippa nasturtium-aquaticum</i> | watercress                      | 1          |
| <b>Total</b>                        |                                 | <b>699</b> |

AIS detected on lake surveys 2004-08

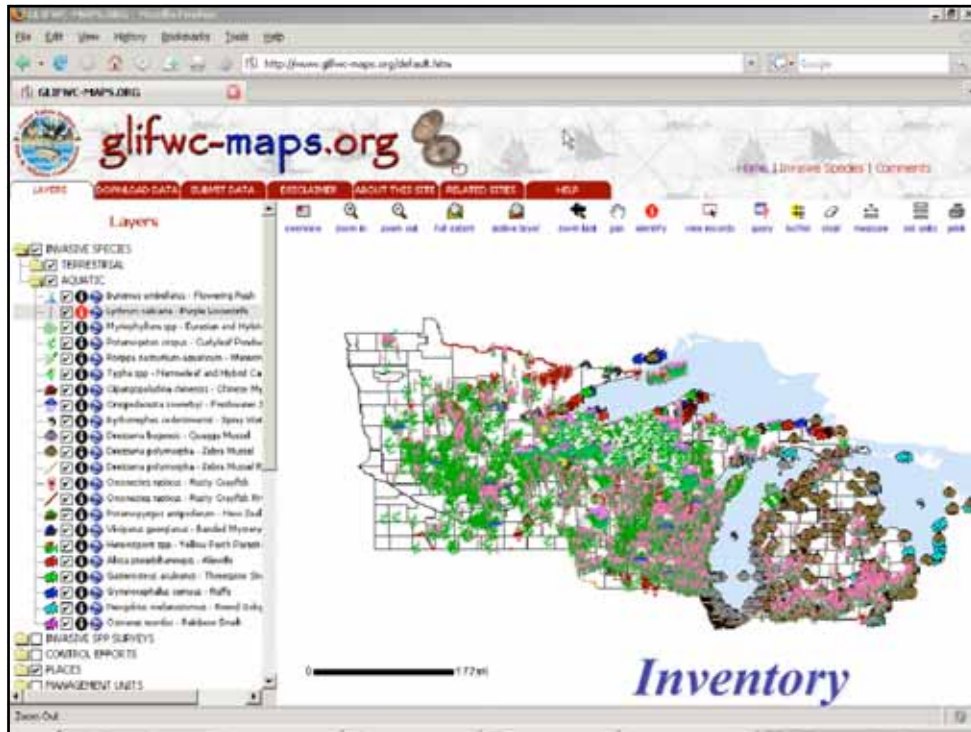
- Notification of new detects to wdnr, lake assoc, affected tribes



Compiled inventory efforts

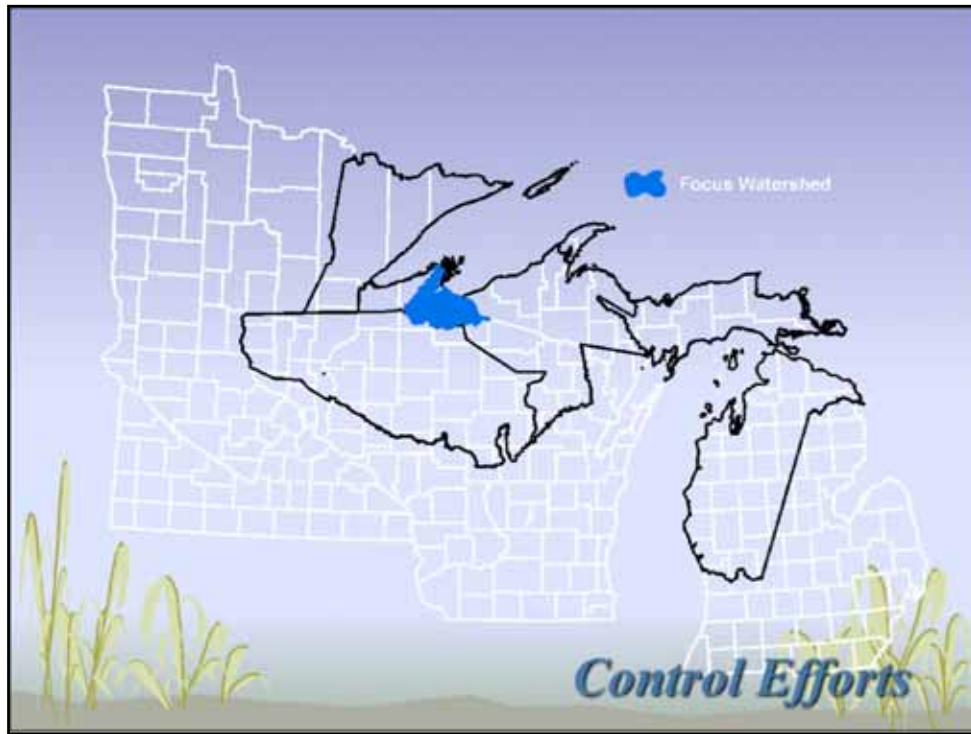
-glifwc, wdnr, UW, others

-Useful for planning/coordinating annual surveys

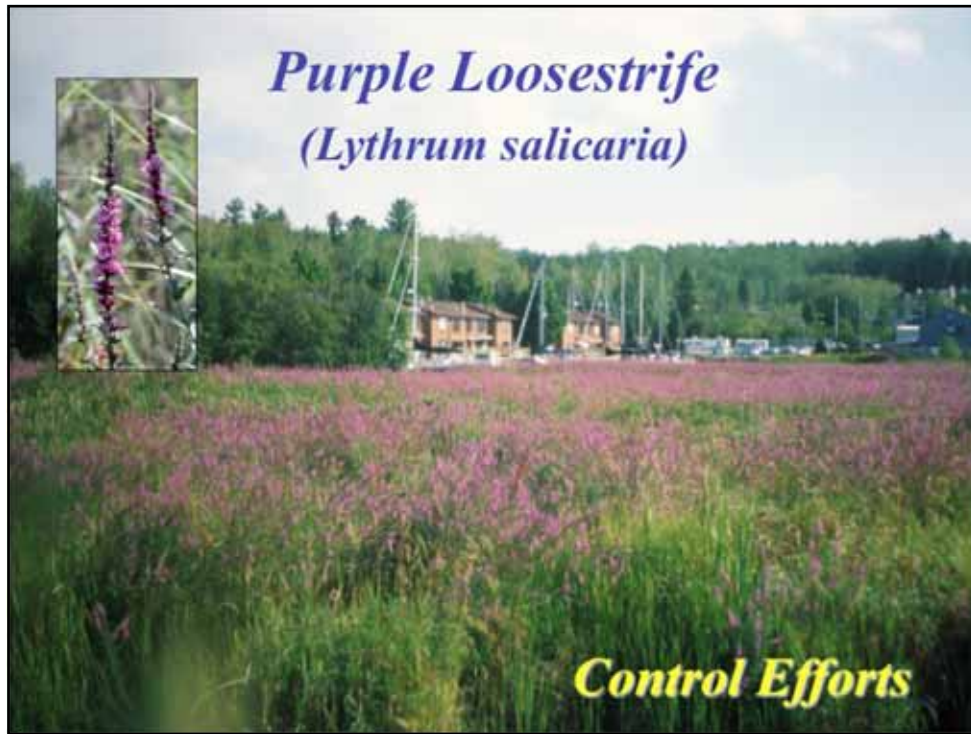


Compiled AIS data





Focus watershed for AIS control efforts



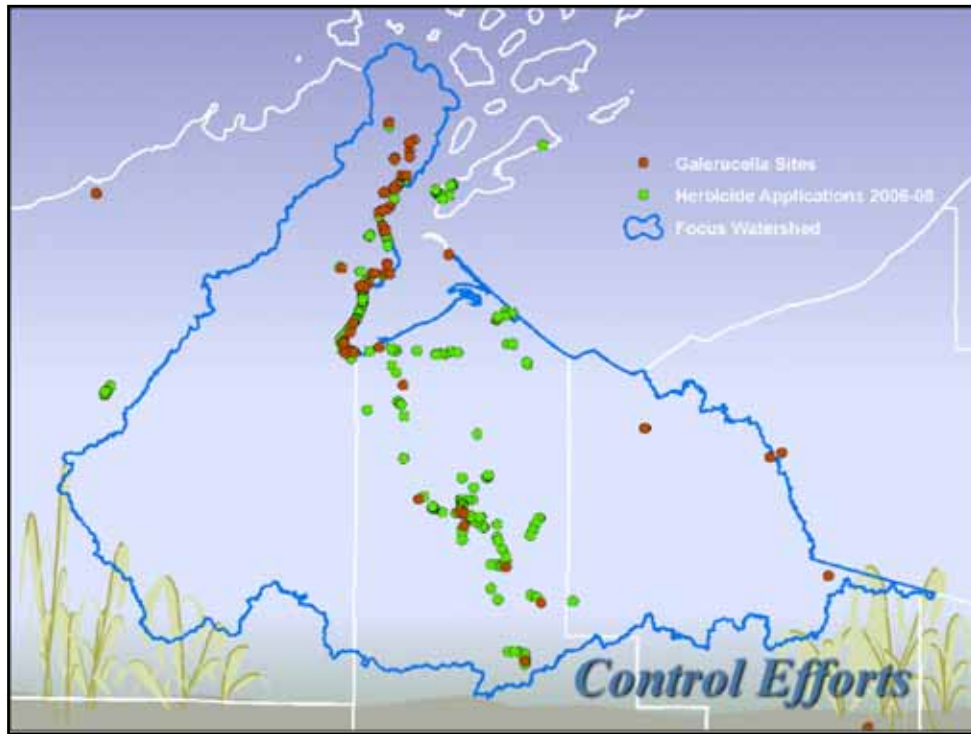
Target spp for AIS control efforts

## *Galerucella*

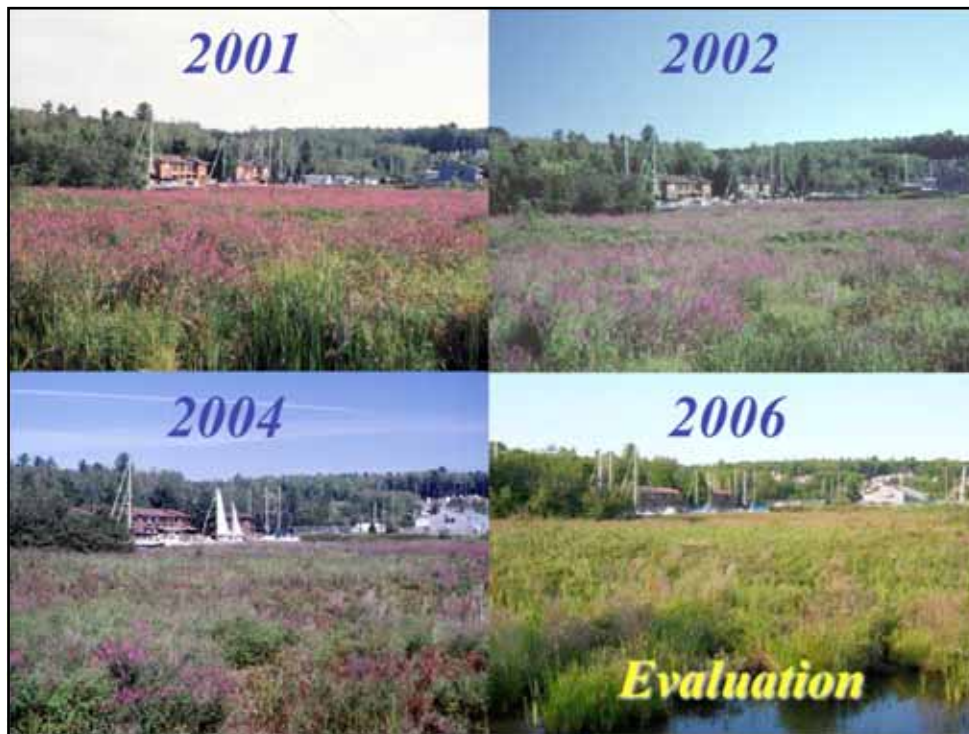


*Control Efforts*

biocontrol



- 65 biocontrol sites (~70 acres)
- 100 herbicide treatments/yr (~ 30 acres)



Port Superior, Washburn, WI

-2001 release

--50,000 *Galerucella*

-No herbicide ever

-Adjacent to Pike R. WDNR property

-No beetles/loosestrife in 2007

-Slight rebound in 2008 of loosestrife

-Similar photo documentation for most biocontrol sites





#### Biocontrol coop/coord efforts

- Collect rootstock for WDNR properties
- Collect Galerucella from previous WDNR releases
- Rearing at UWEX Ag Research Sta.
- Volunteer help from USFWS, Tribes, TNC, USFS
- Passed rearing supplies on to WDNR Northern Region > volunteers
- No ongoing releases, collection efforts continue, 1<sup>st</sup> 3 business days in June  
June



Distribution vs. admin boundaries



NCWMA MOU removes admin boundaries



NCWMA projects

-Workdays

-Workshops

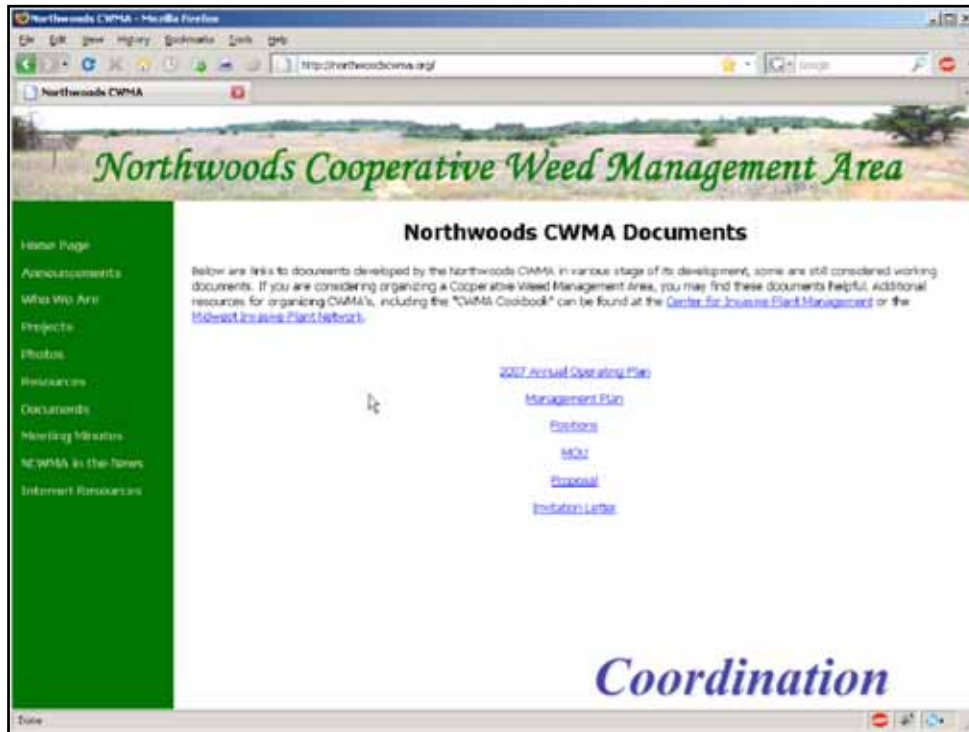
-Biocontrol collection efforts



## Process

- What has already been done?
  - Avoid duplicating efforts
  - Leverage existing resources
- Who are potential partners?
- Establish and maintain frequent communication





Share! Share! Share!



Questions?