

native wetland
vegetated mat

specifications

Carpet material: 100% biodegradable coconut fiber, vegetated with native wetland plants.

Custom orders: RootCarpet™ can be custom grown to your specific needs based on your site conditions. Please allow 8 weeks lead time.

Native wetland plants are installed 10" to 12" on center (approximately 45-65 plants per blanket).

Length: 15 ft (4.6 m)

Width: 3 ft (.92 m)

Area: 45 ft² (4.23 m²)

Coir mat thickness: 2.75" (7 cm)

Coir fiber density: 3' x 15' - 1.022 lbs/sqf

Exterior net structure: Square patterned coir net

Net mesh size: 0.75" x 0.75" (20 mm x 20 mm)

Net thickness: 0.16" (4 mm)

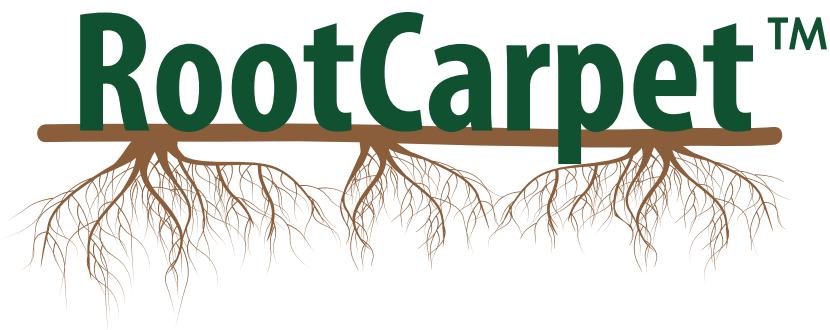
applications

RootCarpet™ can be used for installation along pond edges, bio-swales, golf course water features - anywhere instant native vegetation is needed. RootCarpet™ vegetated mats are especially helpful in establishing vegetation in moving water situations and along newly graded wetland banks. The coir mattress material will provide short-term stabilization while allowing the native vegetation to root into the substrate, eventually stabilizing the bank with an intensive native root structure.

Applications include:

- Golf Course
- Wetland Restoration
- Stream and Lake Banks
- Tidal Zone
- Stormwater Treatment
- Rain Gardens





native wetland
vegetated mat

handling and storage

Because RootCarpet™ contains live plants, delivery must coincide with the installation date.

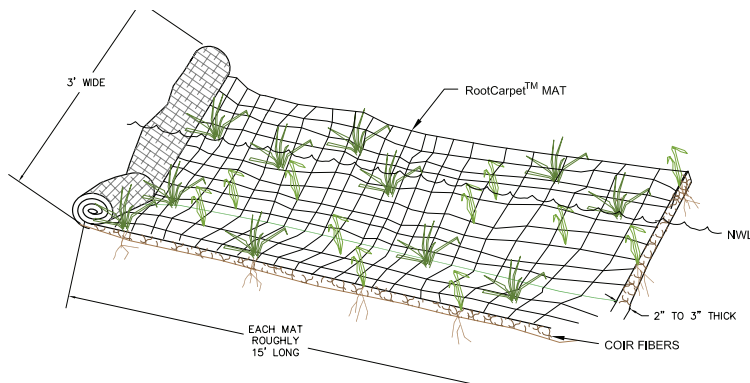
RootCarpet™ will be delivered to the site in loose rolls, tied with twine.

If not installing immediately, unroll and stage in a shaded area on site. RootCarpet™ must be kept moist at all times.

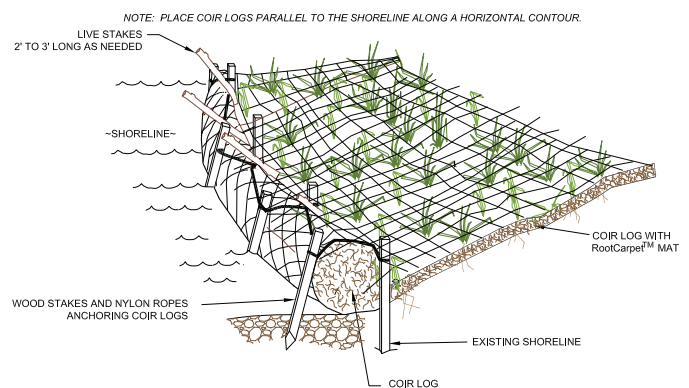
installation

1. Final grade should be smooth, free of rocks, sticks, and existing vegetation.
2. Do not install RootCarpet™ mats on hard, compacted soil.
3. RootCarpet™ mats must have good soil contact and be in contact with water (at the normal water level).
4. If installing in a stream channel, unroll RootCarpet™ mats starting downstream, working upstream. Lay mats loosely and DO NOT stretch. Overlap RootCarpet™ mats similarly to roof shingles, 6" on ends, 4" on sides.
5. If installing in conjunction with vegetated coir logs, RootCarpet™ should be in direct contact with coir logs.
6. Securely anchor with 8" to 12" steel turf staples or hardwood stakes as needed to maintain direct contact with soil.

guides



RootCarpet™ MAT DETAIL
NOT TO SCALE



COIR LOG WITH RootCarpet™ MAT
NOT TO SCALE

JFNew Native Plant Nursery

128 Sunset Drive
Walkerton, IN 46574
574.586.2412

nurserysales@jfnew.com

www.JFNew.com/Nursery

